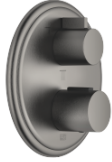


MADISON Concealed thermostat with three function volume control - Brushed Dark Platinum

MADISON

36 427 977 Product version from 3/13/2017 to 3/21/2019



- rotary diverter with volume control and shut-off function
- cover plate Ø 175 mm
- temperature control handle with safety limit stop at 38°C
- hot water temperature limiter, can be preset
- WRAS

	Brushed Dark Platinum	36 427 977-99
	Chrome	36 427 977-00
	Brushed Platinum	36 427 977-06
	Platinum	36 427 977-08
	Durabronze (23kt Gold)	36 427 977-09
	Brushed Durabronze (23kt Gold)	36 427 977-28
	Brushed Gold (PVD)	36 427 977-37
	Brushed Dark Brass (PVD)	36 427 977-39
	Brushed Bronze (PVD)	36 427 977-42

Required miscellaneous

xGRID Installation track 555 mm - 12 360 970 90



Required miscellaneous

Concealed thermostat - 35 427 970 90



- min. recess depth 80 mm
- max. recess depth 136 mm

Required miscellaneous

Concealed thermostat with built-in isolators - 35 428 970 90



- min. recess depth 80 mm
- max. recess depth 136 mm

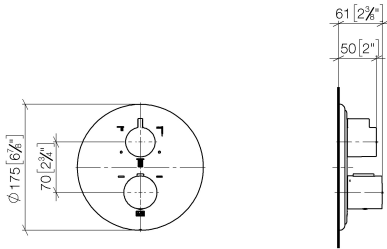
Recommended miscellaneous

xGRID Attachment set for integrating in the dry wall construction - 12 340 970 90

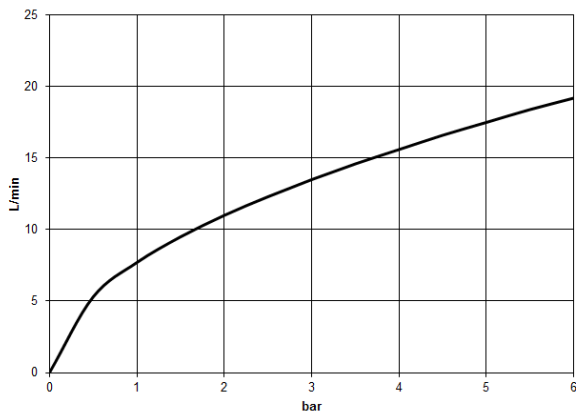


xGRID Attachment set for integrating in the dry wall construction -

36 427 977 Product version from 3/13/2017 to 3/21/2019
mm [inches]



Flow rate chart



Codes & Standards

DIN 4109

EN 1111

ISO 3822

Scottish Water
Byelaws

UK Water Supply
Regulations

Ü-Zeichen



MADISON Concealed thermostat with three function volume control - Brushed
Dark Platinum

MADISON

36 427 977 Product version from 3/13/2017 to 3/21/2019

Certificates and sustainability

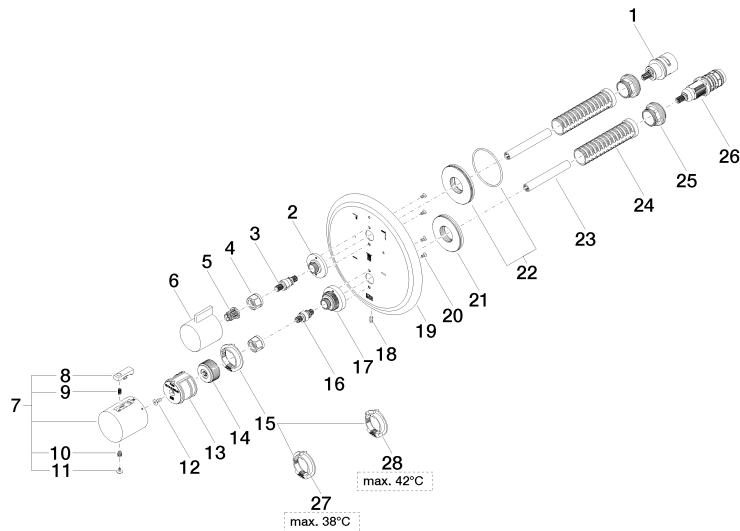
LGA_29

DVGW_DW-
6512DN0

WRAS_250402

EPD-DOR-20230287
-IBA1-EN
Environmental.prod
uct-declarat

36 427 977 Product version from 3/13/2017 to 3/21/2019



MADISON Concealed thermostat with three function volume control - Brushed Dark Platinum

MADISON

36 427 977 Product version from 3/13/2017 to 3/21/2019

Spare parts list

No.	Item Number	Name	Quantity used	Delivery time
16	04 29 06 024 01-00	Spindle with double toothing Ø 12,15 x 30 mm - Chrome	1.00	20
3	04 29 06 111 01-00	Spindle with double toothing Ø 12,15 x 37,2 mm - Chrome	1.00	20
5	90 12 12 002 00 90	Fixing cap white Ø 15 x 12 mm -	1.00	14
22	90 30 01 190 00 90	Connection Ø 55 x 9 mm -	1.00	14
13	90 12 12 052 00 90	Retainer -	1.00	14
14	09 12 12 054 90	Handle mount Ø 28,50 x 16 mm -	1.00	14
28	09 28 10 151 90	Insert up to 42°C Ø 38 x 8 mm -	1.00	-
Spare part can no longer be ordered, please order the replacement item				
09281018990 Temperature limitation ring Thermostat, black -				
12	90 30 30 124 00 90	Mounting Countersunk screw with hexagon socket M4 x 10 mm -	1.00	14
25	09 24 04 257 90	Mounting Nut Ø 32 x 19,5 mm -	2.00	14
2	09 12 12 053-99	Fixing cap mount Ø 34,5 x 15 mm - Brushed Dark Platinum	1.00	40
17	09 12 12 051-99	Fixing cap mount Ø 35 x 26,5 mm - Brushed Dark Platinum	1.00	40
10	90 30 30 136 00 90	Bolt -	1.00	14
26	90 15 02 012 00 90	Thermostat cartridge Ø 27 x 82 mm, 16-18 l/min. -	1.00	-
Spare part can no longer be ordered, please order the replacement item				
9015020130090 Thermostat cartridge Ø 27 x 82 mm, 16-18 l/min. -				
21	09 30 01 188 90	Connection Ø 52 x 9 mm -	1.00	-
Spare part can no longer be ordered, please order the replacement item				
09300129690 Shaft M24x1 Ø52 external -				
8	90 21 33 011 00-13	Repair kit for thermostat handle - black	1.00	14
18	09 31 11 134 90	Mounting Threaded pin with hexagon socket with point M4 x 10 mm -	1.00	14
9	90 16 02 027 00 90	Spring Ø 4,5 x 7,5 mm -	1.00	14
23	90 23 01 124 00 90	Sleeve -	2.00	14
19	09 11 02 165-99	Rosette Ø 175 x 11,5 mm - Brushed Dark Platinum	1.00	-
Spare part can no longer be ordered, please order the replacement item				
7	90 17 33 004 00-99	Handle for thermostat Ø 46 x 48 mm - Brushed Dark Platinum	1.00	-
Spare part can no longer be ordered, please order the replacement item				
90173302000-99 Handle for thermostat Ø 46 x 48 mm - Brushed Dark Platinum				
20	09 30 30 157 90	Mounting Countersunk screw with hexagon socket M3 x 6 mm -	4.00	14
11	90 31 20 049 00-13	Plug - black	1.00	40
4	90 23 30 023 00 90	Cap nut -	2.00	14
1	90 90 03 168 00 90	diverter	1.00	82
6	09 20 67 006-99	Handle for thermostat 41 x 40 x 53 mm - Brushed Dark Platinum	1.00	82
27	09 28 10 150 90	Limiting ring up to 38°C Ø 38 x 8 mm -	1.00	-
Spare part can no longer be ordered, please order the replacement item				
09281018890 Temperature limitation ring Thermostat, 38° stop -				
24	90 18 40 077 01 90	Sleeve -	2.00	14
15	09 28 10 143 90	Limiting ring Ø 38 x 8 mm -	1.00	-
Spare part can no longer be ordered, please order the replacement item				
09281018790 Temperature limitation ring Thermostat -				