


36 120 670 Product version up to 3/15/2019




- automatic diverter
- cover plate 150 x 90 mm
- WRAS

	Brushed Platinum	36 120 670-06
	Chrome	36 120 670-00
	Platinum	36 120 670-08
	Dark Chrome	36 120 670-19
	Brushed Light Gold (PVD)	36 120 670-27
	Brushed Durabrass (23kt Gold)	36 120 670-28
	Matte Black	36 120 670-33
	Brushed Gold (PVD)	36 120 670-37
	Brushed Dark Brass (PVD)	36 120 670-39
	Brushed Bronze (PVD)	36 120 670-42
	Brushed Dark Bronze (PVD)	36 120 670-43
	Brushed Champagne (22kt Gold)	36 120 670-46
	Champagne (22kt Gold)	36 120 670-47
	Brushed Chrome	36 120 670-93
	Brushed Dark Platinum	36 120 670-99


Recommended miscellaneous

	xGRID Attachment set for integrating in the dry wall construction -	12 340 970 90
---	--	---------------


Required miscellaneous

	Concealed single-lever mixer - •min. recess depth 80 mm •max. recess depth 105 mm	35 020 970 90
---	--	---------------

Required miscellaneous

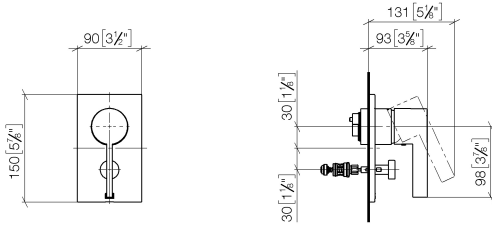
	Concealed single-lever mixer with backflow preventor - •min. recess depth 80 mm •max. recess depth 105 mm	35 021 970 90
---	--	---------------

Required miscellaneous

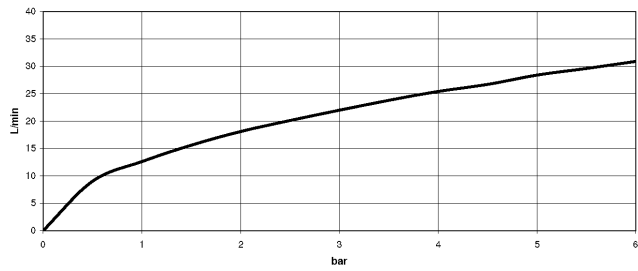
	xGRID Installation track 555 mm -	12 360 970 90
---	--	---------------

36 120 670 Product version up to 3/15/2019

mm [inches]



Flow rate chart



Codes & Standards

DIN 4109

ISO 3822

Scottish Water
Byelaws

UK Water Supply
Regulations

Ü-Zeichen



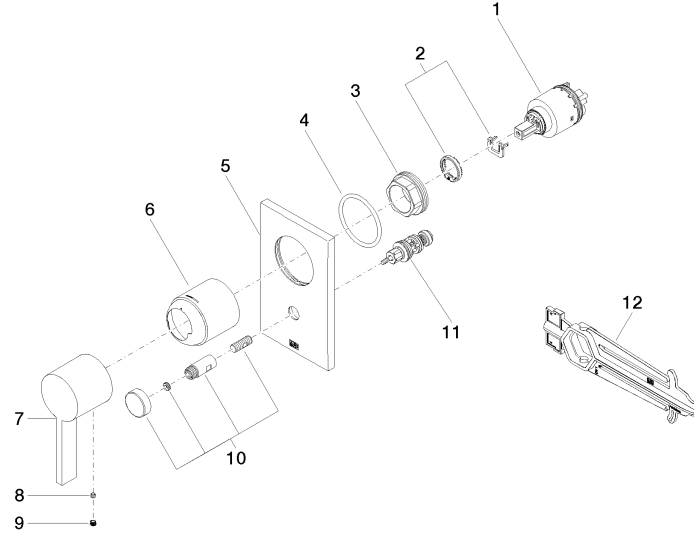
Concealed single-lever mixer with diverter - Brushed Platinum

SERIES SPECIFIC

36 120 670 Product version up to 3/15/2019

Certificates and sustainability

LGA_19	WRAS_2207	EPD-DOR-20230287 -IBA1-EN Environmental.prod uct-declarat
--------	-----------	--



Spare parts list

No.	Item Number	Name	Quantity used	Delivery time
8	09 31 11 099 90	Mounting Threaded pin with hexagon socket with chamfered end M4 x 4 -	1.00	14
12	90 30 09 064 00 90	Spanner for cartridge nut -	1.00	14
3	09 24 04 448 90	Mounting Nut Ø 42 x 17 mm -	1.00	14
1	90 15 05 038 00 90	Single-lever mixer cartridge -	1.00	-
Spare part can no longer be ordered, please order the replacement item				
	9015050390090	Cartridge blue Ø 40 x 75 mm -		
11	90 21 34 081 00 90	Diverter 98 x 64 x 64 mm -	1.00	14
6	09 11 02 260-06	Cover Ø 50 x 58 mm - Brushed Platinum	1.00	20
4	09 14 10 084 90	O-Ring EPDM 70 48 x 3,5 mm -	1.00	14
10	90 31 09 139 00-06	Pull rod for diverter with button Ø 26 x 47,3 mm - Brushed Platinum	1.00	20
7	09 20 67 007-06	Handle Lever 50 x 125 x 46 mm - Brushed Platinum	1.00	20
5	09 11 02 258-06	Rosette for bath 90 x 150 x 9,2 mm - Brushed Platinum	1.00	20
2	04 28 10 149 00 90	Single-lever mixer cartridge -	1.00	14
9	90 31 20 109 00 90	Plug -	1.00	14