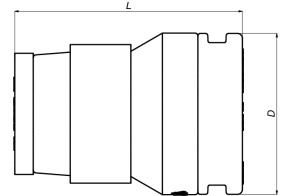


## SK-PIPESTOP16: Stop end for pipe Ø16



### Commercial information

Non-reusable end cap for Henco pipe. Push-fit fitting

#### Basic unit dimensions

|            |          |
|------------|----------|
| Height     | 28 mm    |
| Length     | 40 mm    |
| Width      | 28 mm    |
| Net weight | 0.023 kg |

#### Certificates

QB (CSTBat), ETA, KIWA, ÖVGW Wasser, SINTEF, SITAC, KOMO, STF, GOST-R, TSU, EMI

#### Applications

Potable water, Heating, Cooling, Sanitary

#### Solutions

Building installations, Industry, Utility

## Technical characteristics

|                                    |  |                                  |               |
|------------------------------------|--|----------------------------------|---------------|
| Material connection 1              | Polyvinylidene fluoride (PVDF)                 | Outer pipe diameter connection 1 | 16 Millimetre |
| Surface protection connection 1    | Untreated                                      | Max. operating pressure at 20 °C | 10 Bar        |
| Surface treatment connection 1     | Untreated                                      | Wrench width                     | 0 Millimetre  |
| System specific                    | ✓  | Wrench width union nut           | 0 Millimetre  |
| Nominal diameter connection 1      | DN 12  | Standard Dimension Ratio (SDR)   | 0             |
| Connection 1                       | Insert (push-fitting)                          |                                  |               |
| Material sealing                   | Ethylene-propylene diene monomer rubber (EPDM) |                                  |               |
| Main colour fitting                | White  |                                  |               |
| Ring stiffness class               | Other  |                                  |               |
| With sealing rings/gaskets         | ✓  |                                  |               |
| With drain valve                   | ✗  |                                  |               |
| With de-aerator                    | ✗  |                                  |               |
| Capped                             | ✗  |                                  |               |
| With connection indicator          | ✗  |                                  |               |
| FM quality mark                    | ✗  |                                  |               |
| UL quality mark                    | ✗  |                                  |               |
| ULC quality mark                   | ✗  |                                  |               |
| LPCB quality mark                  | ✗  |                                  |               |
| DIN-CERTCO certificate             | ✗  |                                  |               |
| VdS quality mark                   | ✗  |                                  |               |
| With approval for TÜV              | ✗  |                                  |               |
| DVGW quality mark for gas          | ✗  |                                  |               |
| DVGW quality mark for water        | ✓  |                                  |               |
| KIWA certified                     | ✓  |                                  |               |
| Gastec QA mark                     | ✗  |                                  |               |
| KOMO certified                     | ✓  |                                  |               |
| Type approval according to BBR/EKS | ✗  |                                  |               |