



# TEST REPORT

**DEKRA Testing and Certification (Shanghai) Ltd**

No.1050 Xingxian Road,jiading District,  
Shanghai, 201815

Tel.: +86 21 6181 1500

Fax: +86 21 6181 1515

Contact

Mr. Halo Sheng

E-Mail: Halo.Sheng@dekra.com

Report Issue Date: 2025.10.22

Page 1 of 8

**Test Report No. : 6242785-1.50QS**

**Project no. : 6242785**

Client : Jinko Solar Co., Ltd.  
No.1 Yingbin Road, Economic Development Zone  
334100 Shangrao City Jiangxi, China

Date sample received : 2025.09.26

Product : Photovoltaic (PV) modules

Product description : Please refer to next page(s).

Model. : JKMxxxN-48QL6-DV (xxx=440-490, in step of 5)  
JKMxxxN-48QL6-DB (xxx=440-490, in step of 5)  
JKMxxxN-48QL6-BDV (xxx=440-490, in step of 5)  
JKMxxxN-51QL6-DB (xxx=470-520, in step of 5)  
JKMxxxN-51QL6-BDV (xxx=475-520, in step of 5)

Reference Model not tested : JKMxxxN-48HL4M-BDV (xxx=440-480, in step of 5)  
JKMxxxN-54HL4M-BDV (xxx=495-540, in step of 5)  
JKMxxxN-51QL6-DV(xxx=480-525, in step of 5)  
JKMxxxN-48HL4M-DB(xxx=440-485, in step of 5)  
JKMxxxN-48HL4M-DV(xxx=440-485, in step of 5)  
JKMxxxN-66HL5-BDV (xxx=625-745, in step of 5)

Test Requested : Test of RoHS conformity (2011/65/EU) and its subsequent amendments directive (EU) 2015/863.

Test Method : Please refer to next page(s).

Result : Please refer to next page(s).

Conclusion : Requirement passed.

Testing Period : 2025.09.26—2025.10.13

Signed for and on behalf of  
**DEKRA Testing and Certification (Shanghai) Ltd**



---

Wang Tingting(王婷婷)  
Project Manager

---

Sheng Jinghuan(盛景焕)  
Test Engineer

### TEST RESULTS

sample-no.	sample designation	Pb (%)	Cd (%)	Hg (%)	Cr VI (%)	PBB (%)	PBDE (%)	DEHP* (%)	BBP* (%)	DBP* (%)	DIBP* (%)
001	blue plastic	< 0.1	< 0.01	< 0.1	< 0.1	< 0.1	< 0.1	< 0.1	< 0.1	< 0.1	< 0.1
002	silvery metal	<0.1 <sup>1)</sup>	< 0.01	< 0.1	< 0.1	N/A	N/A	N/A	N/A	N/A	N/A
003	silvery metal	<0.1 <sup>1)</sup>	< 0.01	< 0.1	< 0.1	N/A	N/A	N/A	N/A	N/A	N/A
004	silvery metal	<0.1 <sup>1)</sup>	< 0.01	< 0.1	< 0.1	N/A	N/A	N/A	N/A	N/A	N/A
005	orange rubber	< 0.1	< 0.01	< 0.1	< 0.1	< 0.1	< 0.1	< 0.1	< 0.1	< 0.1	< 0.1
006	transparent glass	< 0.1	< 0.01	< 0.1	< 0.1	< 0.1	< 0.1	N/A	N/A	N/A	N/A
007	gray metal	< 0.1	< 0.01	< 0.1	< 0.1	N/A	N/A	N/A	N/A	N/A	N/A
008	silvery metal	< 0.1	< 0.01	< 0.1	< 0.1	N/A	N/A	N/A	N/A	N/A	N/A
009	black metal	< 0.1	< 0.01	< 0.1	< 0.1	N/A	N/A	N/A	N/A	N/A	N/A
010	black ink	< 0.1	< 0.01	< 0.1	< 0.1	< 0.1	< 0.1	< 0.1	< 0.1	< 0.1	< 0.1
011	white ink	< 0.1	< 0.01	< 0.1	< 0.1	< 0.1	< 0.1	< 0.1	< 0.1	< 0.1	< 0.1
012	white plastic	< 0.1	< 0.01	< 0.1	< 0.1	< 0.1	< 0.1	< 0.1	< 0.1	< 0.1	< 0.1
013	white plastic	< 0.1	< 0.01	< 0.1	< 0.1	< 0.1	< 0.1	< 0.1	< 0.1	< 0.1	< 0.1
014	black plastic	< 0.1	< 0.01	< 0.1	< 0.1	< 0.1	< 0.1	< 0.1	< 0.1	< 0.1	< 0.1
015	black plastic	< 0.1	< 0.01	< 0.1	< 0.1	< 0.1	< 0.1	< 0.1	< 0.1	< 0.1	< 0.1
016	semitransparent plastic	< 0.1	< 0.01	< 0.1	< 0.1	< 0.1	< 0.1	< 0.1	< 0.1	< 0.1	< 0.1
017	semitransparent plastic	< 0.1	< 0.01	< 0.1	< 0.1	< 0.1	< 0.1	< 0.1	< 0.1	< 0.1	< 0.1
018	white plastic	< 0.1	< 0.01	< 0.1	< 0.1	< 0.1	< 0.1	< 0.1	< 0.1	< 0.1	< 0.1
019	black with white plastic	< 0.1	< 0.01	< 0.1	< 0.1	< 0.1	< 0.1	< 0.1	< 0.1	< 0.1	< 0.1
020	black with white plastic	< 0.1	< 0.01	< 0.1	< 0.1	< 0.1	< 0.1	< 0.1	< 0.1	< 0.1	< 0.1
021	black plastic	< 0.1	< 0.01	< 0.1	< 0.1	< 0.1	< 0.1	< 0.1	< 0.1	< 0.1	< 0.1
022	black plastic	< 0.1	< 0.01	< 0.1	< 0.1	< 0.1	< 0.1	< 0.1	< 0.1	< 0.1	< 0.1
023	black plastic	< 0.1	< 0.01	< 0.1	< 0.1	< 0.1	< 0.1	< 0.1	< 0.1	< 0.1	< 0.1
024	gray metal	< 0.1	< 0.01	< 0.1	< 0.1	N/A	N/A	N/A	N/A	N/A	N/A
025	black resistor	< 0.1	< 0.01	< 0.1	< 0.1	<0.1 <sup>2)</sup>	<0.1 <sup>2)</sup>	N/A	N/A	N/A	N/A
026	black plastic	< 0.1	< 0.01	< 0.1	< 0.1	< 0.1	< 0.1	< 0.1	< 0.1	< 0.1	< 0.1
027	silvery metal	< 0.1	< 0.01	< 0.1	< 0.1	N/A	N/A	N/A	N/A	N/A	N/A
028	orange rubber	< 0.1	< 0.01	< 0.1	< 0.1	< 0.1	< 0.1	< 0.1	< 0.1	< 0.1	< 0.1
029	black plastic	< 0.1	< 0.01	< 0.1	< 0.1	< 0.1	< 0.1	< 0.1	< 0.1	< 0.1	< 0.1
030	black rubber	< 0.1	< 0.01	< 0.1	< 0.1	< 0.1	< 0.1	< 0.1	< 0.1	< 0.1	< 0.1
031	black plastic	< 0.1	< 0.01	< 0.1	< 0.1	< 0.1	< 0.1	< 0.1	< 0.1	< 0.1	< 0.1
032	silvery metal	< 0.1	< 0.01	< 0.1	< 0.1	N/A	N/A	N/A	N/A	N/A	N/A
033	silvery metal	< 0.1	< 0.01	< 0.1	< 0.1	N/A	N/A	N/A	N/A	N/A	N/A

034	black plastic	< 0.1	< 0.01	< 0.1	< 0.1	< 0.1	< 0.1	< 0.1	< 0.1	< 0.1	< 0.1
035	silvery metal	< 0.1	< 0.01	< 0.1	< 0.1	N/A	N/A	N/A	N/A	N/A	N/A

1) The analysis by X-ray fluorescence spectrometry showed a detection for Pb. The verification and quantification of Pb was performed by ICP-OES.

2) The analysis by X-ray fluorescence spectrometry showed a detection for Br. The verification and quantification of PBB/PBDE was performed by GC-MS.

N/A: Not applicable

\*=With reference to IEC62321-8:2017, Analysis was performed by GC-MS.

## Description of the analysis procedure (brief version):

### **Test of RoHS conformity**

The measurements are performed according to IEC 62321-3-1 : 2013, "Electrotechnical products - Determination of levels of six regulated substances".

The product is divided in single material samples. The materials are analysed on different parameters of the RoHS-directive to assure that the complete product is RoHS-conform or not. At first a XRF (X-ray fluorescence spectrometry) screening is performed. For every sample following statements can be made.

Table: Screening limits in mg/kg for regulated elements in various matrices

Element	Polymers	Metals	Composite Material
Cd	$BL \leq (70-3\sigma) < X < (130+3\sigma) \leq OL$	$BL \leq (70-3\sigma) < X < (130+3\sigma) \leq OL$	$LOD < X < (150+3\sigma) \leq OL$
Pb	$BL \leq (700-3\sigma) < X < (1300+3\sigma) \leq OL$	$BL \leq (700-3\sigma) < X < (1300+3\sigma) \leq OL$	$BL \leq (500-3\sigma) < X < (1500+3\sigma) \leq OL$
Hg	$BL \leq (700-3\sigma) < X < (1300+3\sigma) \leq OL$	$BL \leq (700-3\sigma) < X < (1300+3\sigma) \leq OL$	$BL \leq (500-3\sigma) < X < (1500+3\sigma) \leq OL$
Br	$BL \leq (300-3\sigma) < X$		$BL \leq (250-3\sigma) < X$
Cr	$BL \leq (700-3\sigma) < X$	$BL \leq (700-3\sigma) < X$	$BL \leq (500-3\sigma) < X$

Below limit (**BL**): the tested material complies to the RoHS directive.

Inconclusive (**X**): If the level of the measurement is around the maximum allowed, or if the level for Chrome or Bromine is too high, other more accurate methods are needed to determine the exact level or the composition of Chrome and Bromine.

Over limit (**OL**): If the level of lead, mercury or cadmium is well above the maximum allowed levels (the XRF uncertainty is taken into account), the tested material does not comply with the RoHS directive.

In case of **inconclusive** XRF results, following analysis procedures are applied:

In order to examine the material samples for the heavy metals cadmium, lead and mercury they are digested in acid and the solutions are used to carry out the analysis for the heavy metals by ICP-OES or atomic-absorption spectroscopy.

Hexavalent chromium is checked by extracting the sample with water at 100 °C (determination of Cr VI in colorless and colored chromate coating on metals) respectively with alkaline extraction at 90-95 °C (determination of Cr VI in polymers and electronic components) followed by photometric analysis.

In the case of metallic components with a surface coating containing hexavalent Chromium (passivation) the concentration is expressed in mg of Chromium VI per component. In order to obtain further information about the concentration on the surface coating it is necessary to know the weight per unit area of the coating and the surface area of the component. Information about surface coatings is to be provided by the client.

The examination for bromine-based flame retardant products is carried out by gas chromatography-mass spectrometry after extraction by solvents; this involves the individual analysis and quantification of the substances specified in the RoHS. The current valid regulations relating to exceptions in respect of the analysed substances are to be taken into account by the client.

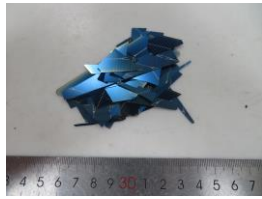
The following Polybrominated Biphenyls (PBBs) and Polybrominated Diphenyl Ethers (PBDEs) are analyzed:

2-Bromobiphenyl PBB2, Dibromobiphenyl PBB15, Tribromobiphenyl PBB30, Tetrabromobiphenyl PBB52, Pentabromobiphenyl PBB103, Hexabromobiphenyl PBB153, Heptabromobiphenyl PBB250, Octabromobiphenyl PBB250, Nonabromobiphenyl PBB250, Decabromobiphenyl PBB209, Bromodiphenylether BDE2, Dibromodiphenylether BDE15, Tribromodiphenylether BDE30, Tetrabromodiphenylether BDE62, Pentabromodiphenylether BDE99, Hexabromodiphenylether BDE153, Heptabromodiphenylether BDE183, Octabromodiphenylether BDE203, Nonabromodiphenylether BDE206, Decabromodiphenylether BDE209.

**Limits according to RoHS (2011/65/EU) and its subsequent amendments directive (EU) 2015/863 / Test methods (additional chemical analysis):**

Parameter	Limits according to RoHS	Test method
Cadmium	0,01 % (100 mg/kg or 0,1 g/kg)	IEC62321-5:2013
Lead	0,1 % (1000 mg/kg or 1 g/kg)	IEC62321-5:2013
Hexavalent Chromium	0,1 % (1000 mg/kg or 1 g/kg)	Metal: IEC62321-7-1:2015 Non-metal: IEC62321-7-2:2017
Mercury	0,1 % (1000 mg/kg or 1 g/kg)	IEC62321-4:2013/AMD1:2017
PBB and PBDE	0,1 % (1000 mg/kg or 1 g/kg)	IEC62321-6:2015
DEHP	0,1 % (1000 mg/kg or 1 g/kg)	IEC62321-8:2017
BBP	0,1 % (1000 mg/kg or 1 g/kg)	IEC62321-8:2017
DBP	0,1 % (1000 mg/kg or 1 g/kg)	IEC62321-8:2017
DIBP	0,1 % (1000 mg/kg or 1 g/kg)	IEC62321-8:2017

### Sample Photos



Test item001



Test item002



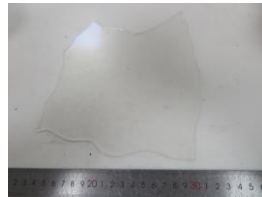
Test item003



Test item004



Test item005



Test item006



Test item007



Test item008



Test item009



Test item010



Test item011



Test item012



Test item013



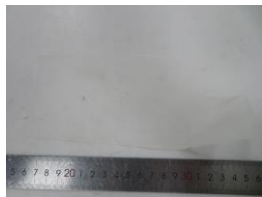
Test item014



Test item015



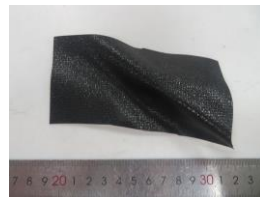
Test item016



Test item017



Test item018



Test item019



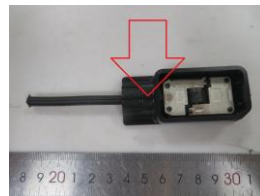
Test item020



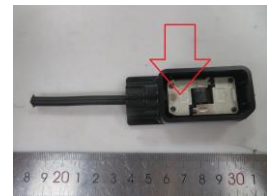
Test item021



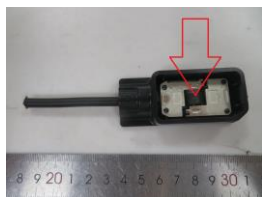
Test item022



Test item023



Test item024



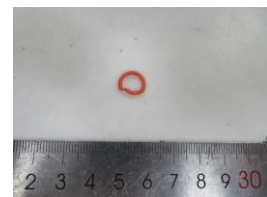
Test item025



Test item026



Test item027



Test item028



Test item029



Test item030



Test item031



Test item032



Test item033



Test item034



Test item035

---End of Report---

This document is issued subject to the company's General Terms and Conditions available at <https://www.dekra.com.cn/en/terms-and-conditions/>. Unless otherwise stated, the test results refer exclusively to the samples tested in this report. Statements of conformity are based on simple acceptance criteria without taking measurement uncertainty into consideration. DEKRA declines any responsibility with information provided and/or deviations required by the client that may affect the validity of test results. This report can only be reproduced in full and with written approval of the test laboratory. If you have any comment on the test results, please contact us in writing within 15 days after the issuance of this report. The test results shall not be used for propaganda without permission of the test laboratory. This report is not to be used for social proof function in China market.