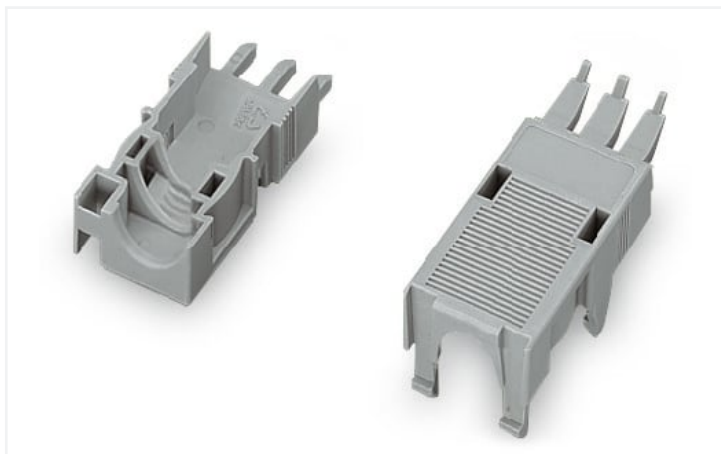


# Data Sheet | Item Number: 769-1604

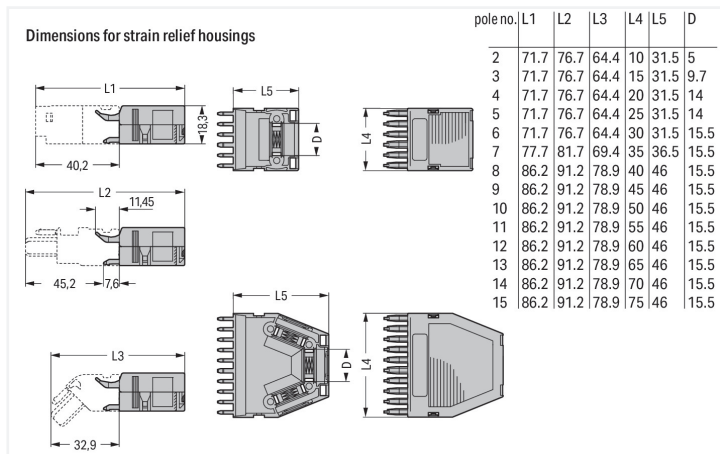
Strain relief housing; for female and male connectors; 2 parts; Pin spacing 5 mm; 4-pole; gray

<https://www.wago.com/769-1604>



Color: ■ gray

Similar to illustration



Dimensions in mm  
Dimensions in mm

## Connection data

### Connection 1

Pole number 4

## Physical data

Width 20 mm / 0.787 inches  
Height 18.3 mm / 0.72 inches  
Depth 31.5 mm / 1.24 inches

## Material data

Note (material data)

[Information on material specifications can be found here](https://www.wago.com/us/material-specifications)

Color gray  
Fire load 0.194 MJ  
Weight 4.1 g

## Commercial data

Product Group 18 (X-COM-System)  
eCl@ss 10.0 27-14-11-92  
eCl@ss 9.0 27-14-11-92  
ETIM 8.0 EC002848  
ETIM 7.0 EC002848  
PU (SPU) 25 pcs  
Packaging type Box  
Country of origin DE  
GTIN 4017332652896  
Customs tariff number 39269097900

## Environmental Product Compliance

RoHS Compliance Status Compliant, No Exemption

## Downloads

### Environmental Product Compliance

**Compliance Search**

Environmental Product Compliance 769-1604 [↓](#)

## Documentation

**Additional Information**

Technical Section pdf  
2240.62 KB [↓](#)

Bid Text			
769-1604	19.02.2019	xml 2.64 KB	<a href="#">↓</a>
769-1604	23.05.2017	doc 23.00 KB	<a href="#">↓</a>

## CAD/CAE-Data

**CAD data**

2D/3D Models 769-1604 [↓](#)










CAE data	
EPLAN Data Portal 769-1604	<a href="#">↓</a>
WSCAD Universe 769-1604	<a href="#">↓</a>
ZUKEN Portal 769-1604	<a href="#">↓</a>

## 1 Compatible Products

### 1.1 Optional Accessories

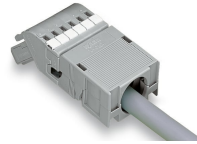
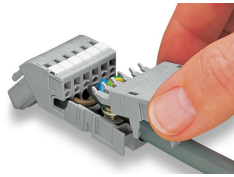
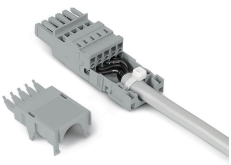
#### 1.1.1 Marking

##### 1.1.1.1 Marker

 <p><b>Item No.: 209-501/000-006</b> WSB marking card; as card; not stretchable; plain; snap-on type; blue</p>	 <p><b>Item No.: 209-501/000-007</b> WSB marking card; as card; not stretchable; plain; snap-on type; gray</p>	 <p><b>Item No.: 209-501/000-023</b> WSB marking card; as card; not stretchable; plain; snap-on type; green</p>	 <p><b>Item No.: 209-501/000-017</b> WSB marking card; as card; not stretchable; plain; snap-on type; light green</p>
 <p><b>Item No.: 209-501/000-012</b> WSB marking card; as card; not stretchable; plain; snap-on type; orange</p>	 <p><b>Item No.: 209-501/000-005</b> WSB marking card; as card; not stretchable; plain; snap-on type; red</p>	 <p><b>Item No.: 209-501/000-024</b> WSB marking card; as card; not stretchable; plain; snap-on type; violet</p>	 <p><b>Item No.: 209-501</b> WSB marking card; as card; not stretchable; plain; snap-on type; white</p>
 <p><b>Item No.: 209-501/000-002</b> WSB marking card; as card; not stretchable; plain; snap-on type; yellow</p>			

## Installation Notes

### Installation

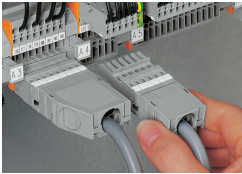


2- to 5-pole strain relief housings feature one cable outlet (rear side).  
6- to 7-pole strain relief housings feature one cable outlet (rear side).  
8- to 9-pole strain relief housings feature two cable outlets and one cover.  
10- to 16-pole strain relief housings feature three cable outlets and two covers.

Snapping on a strain relief housing.

Snap-on type strain relief housing, consists of strain relief support and housing, 6-pole and 1-conductor female plugs, angled, 6-pole

### Application



Application  
Snap-on type strain relief housings for 769 Series