



Color: ■ light gray

Similar to illustration

Electrical data			
Ratings per IEC/EN		Ratings per UL	
Ratings per	IEC/EN 60947-7-1	Approvals per	UL 1059
		Rated voltage UL (Use Group B)	600 V
		Rated current UL (Use Group B)	150 A
		Rated voltage UL (Use Group C)	600 V
		Rated current UL (Use Group C)	150 A
Ratings per CSA		Ex information	
Approvals per	CSA 22.2 No 158	Reference hazardous areas	See "Downloads – Documentation – Additional Information: Technical Section; Technical Explanations"
Rated voltage CSA (Use Group B)	600 V	Ratings per	ATEX: PTB 98 ATEX 3134 U (Ex eb IIC Gb)
Rated current CSA (Use Group B)	150 A	Rated voltage EN (Ex e II)	880 V
Rated voltage CSA (Use Group D)	600 V	Rated current (Ex e II)	134 A
Rated current CSA (Use Group D)	150 A		
Power Loss			
Power loss, per pole (potential)	4.725 W		
Rated current I _N for specified power loss	150 A		
Resistance value for specified, current-dependent power loss	0.0001 Ω		
Connection data			
Clamping units	2	Connection 1	
Total number of potentials	1	Connection technology	POWER CAGE CLAMP
Number of levels	1	Actuation type	Operating tool
Number of jumper slots	2	Connectable conductor materials	Copper
		Nominal cross-section	50 mm²
		Solid conductor	10 ... 50 mm² / 8 ... 1/0 AWG
		Stranded conductor	10 ... 70 mm² / 8 ... 2/0 AWG
		Fine-stranded conductor	10 ... 70 mm² / 8 ... 2/0 AWG
		Fine-stranded conductor; with insulated ferrule	10 ... 50 mm² / 8 ... 1/0 AWG



Connection 1	
Fine-stranded conductor; with uninsulated ferrule	10 ... 50 mm² / 8 ... 1/0 AWG
Strip length	30 mm / 1.18 inches
Wiring direction	Side-entry wiring

Physical data		
Width		20 mm / 0.787 inches
Height		94 mm / 3.701 inches
Depth from upper-edge of DIN-rail		87 mm / 3.425 inches

Mechanical data	
Mounting type	Panel mounting
Marking level	Side marking

Material data	
Note (material data)	Information on material specifications can be found here
Color	light gray
Material group	I
Insulation material (main housing)	Polyamide (PA66)
Flammability class per UL94	V0
Fire load	2.068 MJ
Weight	164.6 g

Environmental requirements	
Processing temperature	-35 ... +85 °C
Continuous operating temperature	-60 ... +105 °C

Commercial data	
PU (SPU)	5 pcs
Packaging type	Box
Country of origin	PL
GTIN	4066966619942
Customs tariff number	85369010000

Environmental Product Compliance	
RoHS Compliance Status	Compliant, No Exemption

Approvals / Certificates

General approvals		General approvals	
		UL Underwriters Laboratories Inc.	UL 1059 E45172

Approval	Standard	Certificate Name
CCA DEKRA Certification B.V.	EN 60947	NTR NL-7707
CSA DEKRA Certification B.V.	C22.2,C22.2 No. 158	154112
KEMA/KEUR DEKRA Certification B.V.	EN 60947	71-105562



Approvals for marine applications



Approval	Standard	Certificate Name
ABS American Bureau of Ship- ping	EN 60947	20-HG1941090-PDA

Approvals for hazardous areas



Approval	Standard	Certificate Name
AEx Underwriters Laboratories Inc.	-	E185892 (AEx eb II C resp. Ex eb II C)
ATEX Physikalisch Technische Bundesanstalt	EN 60079-0	PTB 98 ATEX 3134 U (II 2 G Ex eb IIC Gb or I M 2 Ex eb I Mb)
IECEx Physikalisch Technische Bundesanstalt	IEC 60079-0	IECEx PTB 16.0001U (Ex eb IIC Gb or Ex eb I Mb)

Downloads

Environmental Product Compliance

Compliance Search
Environmental Product Compliance 285-143



Documentation

Additional Information
Technical Section
pdf 2246.92 KB



1 Compatible Products

1.1 Optional Accessories

1.1.1 Cover

1.1.1.1 Cover



[Item No.: 285-441](#)
Finger guard; touchproof cover protects
unused conductor entries and jumper
slots; for 50 mm² high-current tbs; yellow

1.1.2 Ferrule

1.1.2.1 Ferrule



[Item No.: 216-424](#)
Ferrule; Sleeve for 35 mm² / AWG 2; unin-
sulated; electro-tin plated; electrolytic
copper; gastight crimped; acc. to DIN
46228, Part 1/08.92; silver-colored



[Item No.: 216-425](#)
Ferrule; Sleeve for 50 mm² / AWG 1; unin-
sulated; electro-tin plated; electrolytic
copper; acc. to DIN 46228, Part 1/08.92



1.1.3 Installation

1.1.3.1 Mounting accessories



Item No.: 285-448
Fixing element; for 50 mm² high-current terminal blocks; orange



Item No.: 249-197
Screwless end stop; 14 mm wide; for DIN-rail 35 x 15 and 35 x 7.5; gray

1.1.4 Jumper

1.1.4.1 Jumper



Item No.: 285-450
Jumper; insulated; gray

1.1.5 Marking

1.1.5.1 Group marker carrier



Item No.: 249-105
Group marker carrier; gray

1.1.5.2 Marker



Item No.: 793-5501/000-006
WMB marking card; as card; for terminal block width 5 - 17.5 mm; stretchable 5 - 5.2 mm; plain; snap-on type; blue



Item No.: 793-5501/000-014
WMB marking card; as card; for terminal block width 5 - 17.5 mm; stretchable 5 - 5.2 mm; plain; snap-on type; brown



Item No.: 793-5501/000-007
WMB marking card; as card; for terminal block width 5 - 17.5 mm; stretchable 5 - 5.2 mm; plain; snap-on type; gray



Item No.: 793-5501/000-023
WMB marking card; as card; for terminal block width 5 - 17.5 mm; stretchable 5 - 5.2 mm; plain; snap-on type; green



Item No.: 793-5501/000-017
WMB marking card; as card; for terminal block width 5 - 17.5 mm; stretchable 5 - 5.2 mm; plain; snap-on type; light green



Item No.: 793-5501/000-012
WMB marking card; as card; for terminal block width 5 - 17.5 mm; stretchable 5 - 5.2 mm; plain; snap-on type; orange



Item No.: 793-5501/000-005
WMB marking card; as card; for terminal block width 5 - 17.5 mm; stretchable 5 - 5.2 mm; plain; snap-on type; red



Item No.: 793-5501/000-024
WMB marking card; as card; for terminal block width 5 - 17.5 mm; stretchable 5 - 5.2 mm; plain; snap-on type; violet



Item No.: 793-5501
WMB marking card; as card; for terminal block width 5 - 17.5 mm; stretchable 5 - 5.2 mm; plain; snap-on type; white



Item No.: 793-5501/000-002
WMB marking card; as card; for terminal block width 5 - 17.5 mm; stretchable 5 - 5.2 mm; plain; snap-on type; yellow



Item No.: 793-501/000-006
WMB marking card; as card; not stretchable; plain; snap-on type; blue



Item No.: 793-501/000-007
WMB marking card; as card; not stretchable; plain; snap-on type; gray



Item No.: 793-501/000-023
WMB marking card; as card; not stretchable; plain; snap-on type; green



Item No.: 793-501/000-017
WMB marking card; as card; not stretchable; plain; snap-on type; light green



Item No.: 793-501/000-012
WMB marking card; as card; not stretchable; plain; snap-on type; orange



Item No.: 793-501/000-005
WMB marking card; as card; not stretchable; plain; snap-on type; red



Item No.: 793-501/000-024
WMB marking card; as card; not stretchable; plain; snap-on type; violet



Item No.: 793-501
WMB marking card; as card; not stretchable; plain; snap-on type; white



Item No.: 793-501/000-002
WMB marking card; as card; not stretchable; plain; snap-on type; yellow



Item No.: 2009-115/000-006
WMB-Inline; for Smart Printer; 1500 pieces on roll; stretchable 5 - 5.2 mm; plain; snap-on type; blue



Item No.: 2009-115/000-007
WMB-Inline; for Smart Printer; 1500 pieces on roll; stretchable 5 - 5.2 mm; plain; snap-on type; gray



Item No.: 2009-115/000-023
WMB-Inline; for Smart Printer; 1500 pieces on roll; stretchable 5 - 5.2 mm; plain; snap-on type; green



Item No.: 2009-115/000-017
WMB-Inline; for Smart Printer; 1500 pieces on roll; stretchable 5 - 5.2 mm; plain; snap-on type; light green



Item No.: 2009-115/000-012
WMB-Inline; for Smart Printer; 1500 pieces on roll; stretchable 5 - 5.2 mm; plain; snap-on type; orange

1.1.5.2 Marker



Item No.: 2009-115/000-005
WMB-Inline; for Smart Printer; 1500 pieces on roll; stretchable 5 - 5.2 mm; plain; snap-on type; red



Item No.: 2009-115/000-024
WMB-Inline; for Smart Printer; 1500 pieces on roll; stretchable 5 - 5.2 mm; plain; snap-on type; violet



Item No.: 2009-115
WMB-Inline; for Smart Printer; 1500 pieces on roll; stretchable 5 - 5.2 mm; plain; snap-on type; white



Item No.: 2009-115/000-002
WMB-Inline; for Smart Printer; 1500 pieces on roll; stretchable 5 - 5.2 mm; plain; snap-on type; yellow

1.1.5.3 Marker carrier



Item No.: 285-442
Adaptor; gray

1.1.6 Power tap

1.1.6.1 Power tap



Item No.: 285-447
Power tap; for 50 mm² high-current tbs; Module width 16 mm; gray

1.1.7 Protective warning marker

1.1.7.1 Cover



Item No.: 285-440
Protective warning marker; with high-voltage symbol, black; yellow



Item No.: 285-449
Protective warning marker; yellow

1.1.8 Tool

1.1.8.1 Operating tool



Item No.: 285-172
Allen wrench; with a partially insulated shaft; green



Item No.: 285-173
Allen wrench; with a partially insulated shaft; with anti-rotation protection; green

Installation Notes

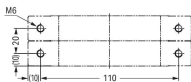
Installation



Align and snap high-current, through terminal blocks together.



Optionally, insert block-to-block connector (285-448) into housing slot.



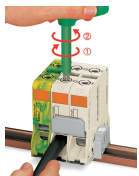


Conductor termination



For the optimal clamping force:

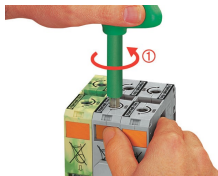
- Bend conductor
- Cut conductor to length (conductor end must be straight)
- Strip conductor



A short counter-clockwise rotation releases the tab. When unlocked, the T-wrench rotates clockwise, securely clamping the conductor.



Always observe the on-unit printed strip length guide!

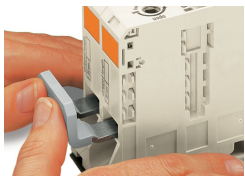


Conductor termination – step 1:
Rotate the T-wrench counter-clockwise to the stop. Next, push in the orange locking tab. The clamp is locked open for hands-free wiring.

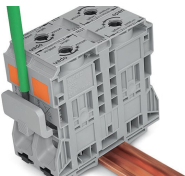


Insert a stripped conductor into the clamping unit until it hits the backstop. Hold in this position.

Commoning

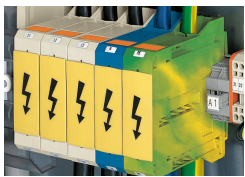


Commoning with an adjacent jumper: insert the jumper above the conductor entry hole – prior to conductor termination. The nominal cross-section remains unchanged.

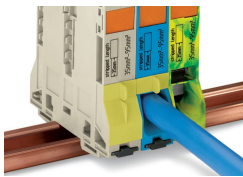


Removing jumper via operating tool.

Cover

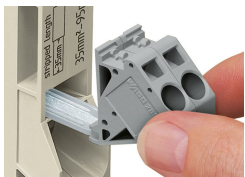


Protective warning marker may indicate: Notice: Power is still on even after switching off the main switch!

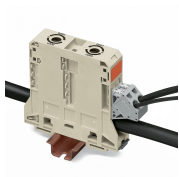


Yellow, detachable finger guards provide touch-proof safety by shielding jumper contact slots and/or unused conductor entries.

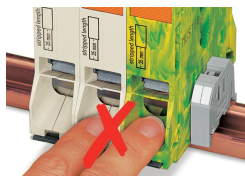
Power tap



Easily and consistently tap directly into the power supply. Insert the unwired tap before opening the clamping unit.



Security

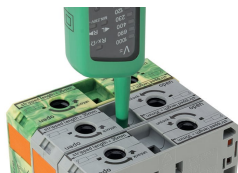


Risk of Injury!
Do not insert fingers in the conductor entry!

Testing

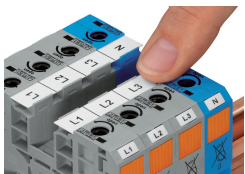


Testing via touch-proof 4 mm Ø test plugs (not available from WAGO, but offered by industry suppliers such as, Multi-Contact Deutschland GmbH).

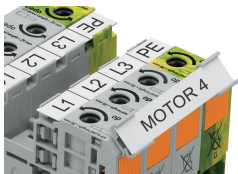


Testing
Voltage measurements can be performed, e.g., using a 2-pole voltage tester (206-707).

Marking



WMB markers or self-adhesive, printable marking strips can be accommodated on 35, 50 and 95 mm² high-current terminal blocks.



Marker carrier (Item No. 285-442) for marking strips (Item No. 2009-110) or 2 WMB markers for 285-13x, 285-15x and 285-19x Terminal Blocks