



Features

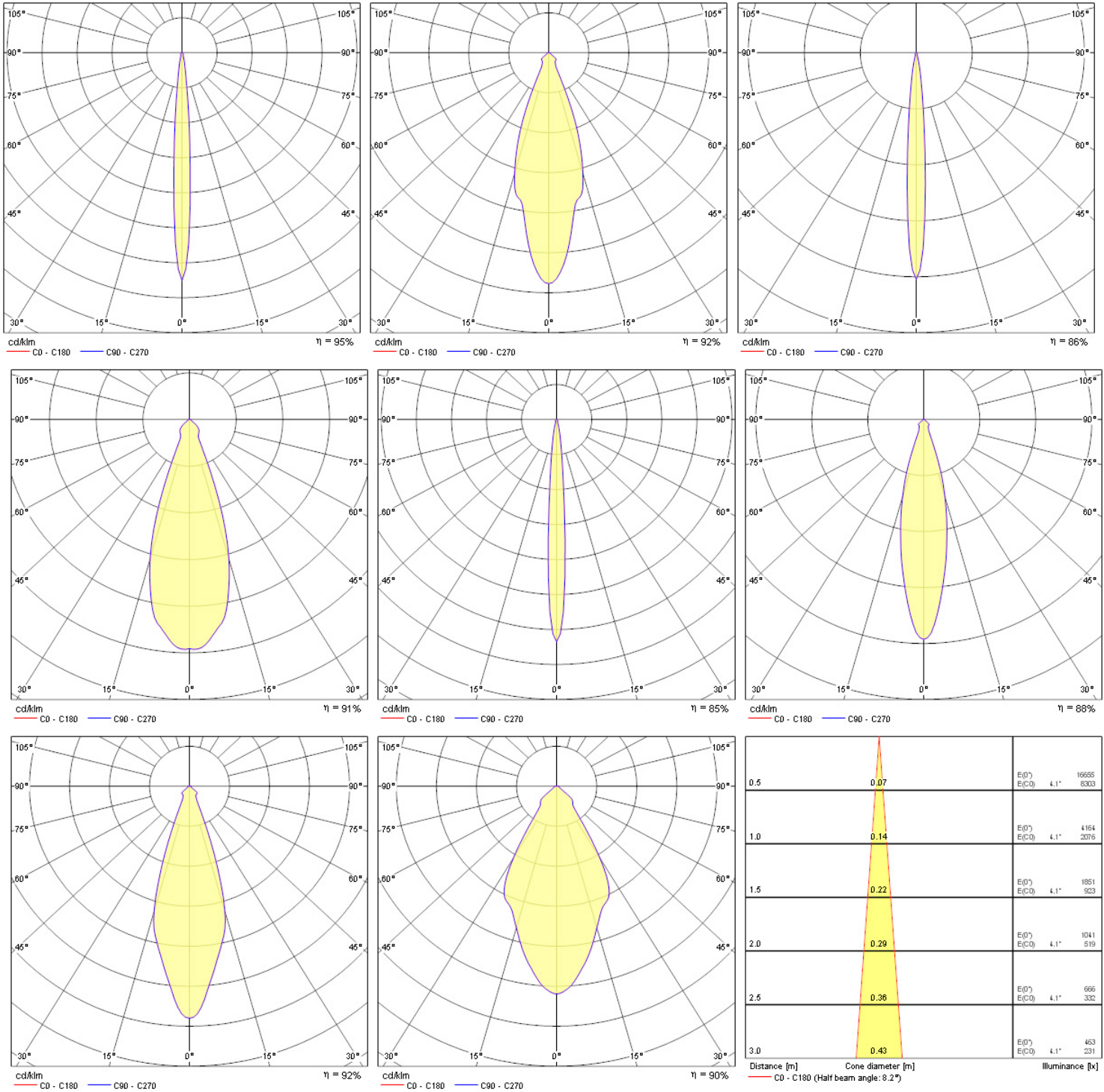
- INSTAR TREND SW IP44 INDOOR BA



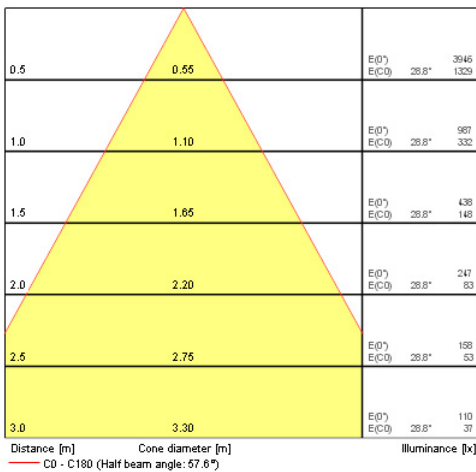
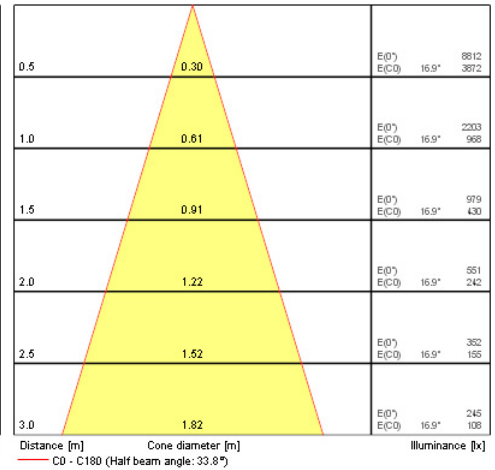
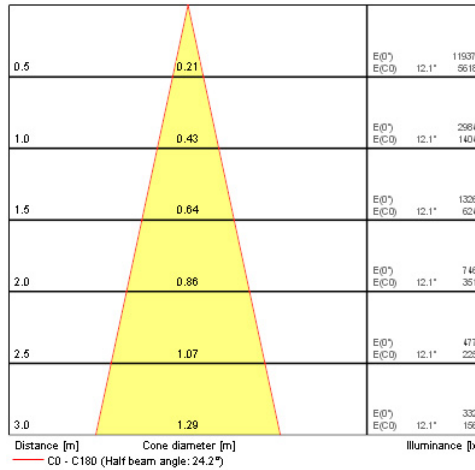
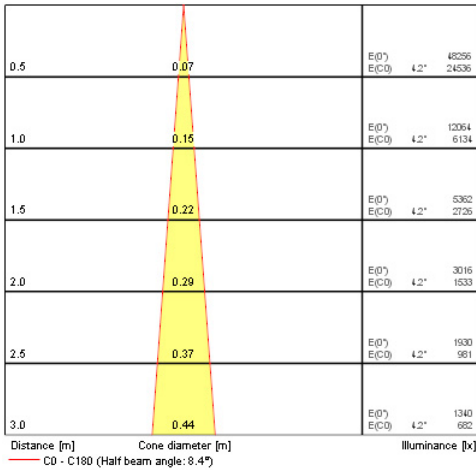
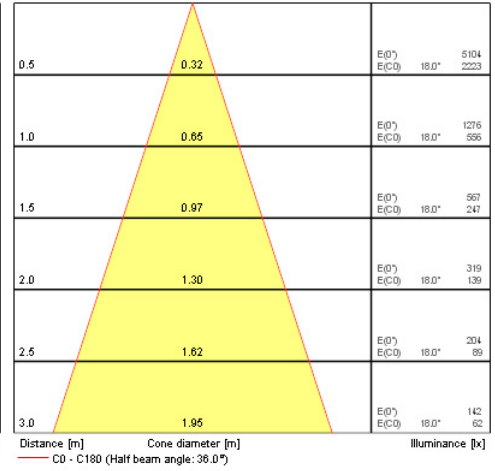
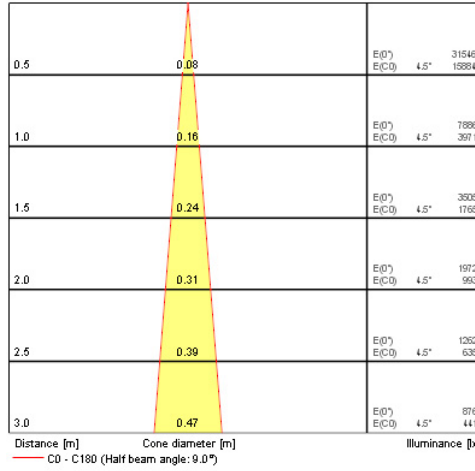
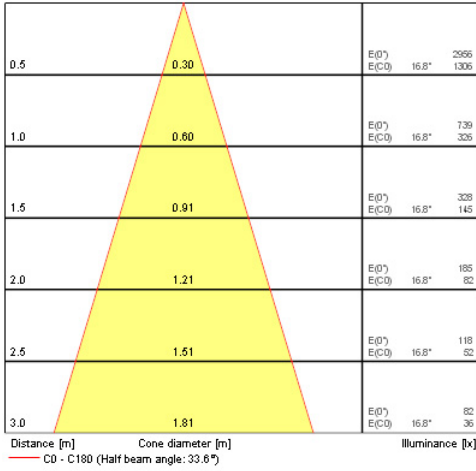
Product Overview

| | |
|-----------------------|-------------------------------------|
| Product name | INSTAR TREND SW IP44 INDOOR BA |
| Technology | Accessory |
| Cap/Base | GX5.3 |
| Housing | Aluminium |
| Mount | Ceiling recessed mounting |
| Light source included | Fixture without Lightsource |
| Environment | Indoor |
| General application | Hospitality, Residential & Consumer |
| ETIM Class | EC001744 |
| E-number FI | 4274924 |
| E-number SE | 7461924 |
| E-number Norway | 3223416 |
| LOR (%) | Dependent on lamp |
| Electrical protection | Class III |
| Control gear mounting | Remote |
| Housing colour | Aluminium |
| IP rating | IP44/20 |
| IK rating | IK02 |
| Product EAN number | 8711971790617 |
| Warranty | 3 years |

Photometry



INSTAR TREND SW IP44 INDOOR BA 3079061



Data table

INSTAR TREND SW IP44 INDOOR BA 3079061

GENERAL DATA

| | |
|---------------------|-------------------------------------|
| Product name | INSTAR TREND SW IP44 INDOOR BA |
| Technology | Accessory |
| Cap/Base | GX5.3 |
| Housing | Aluminium |
| Mount | Ceiling recessed mounting |
| Environment | Indoor |
| General application | Hospitality, Residential & Consumer |
| ETIM Class | EC001744 |
| E-number FI | 4274924 |
| E-number SE | 7461924 |
| E-number Norway | 3223416 |
| Warranty | 3 years |

OPTICAL DATA

| | |
|-------------------------|-------------------|
| LOR (%) | Dependent on lamp |
| Adjustable chromaticity | N |
| Distribution type | Adjustable |

ELECTRICAL DATA

| | |
|--|-----------------------------|
| Light source included | Fixture without Lightsource |
| Primary Supply/Product voltage - min (V) | 12 |
| Primary Supply/Product voltage - max (V) | 12 |
| Electrical protection | Class III |
| Control gear required | No |
| Control gear mounting | Remote |
| Nominal Frequency (Hz) | 50/60Hz |

PHYSICAL DATA

| | |
|-----------------------------|-----------|
| Housing colour | Aluminium |
| IP rating | IP44/20 |
| IK rating | IK02 |
| Max. Lamp Diameter (mm) - D | 95 |

INSTAR TREND SW IP44 INDOOR BA 3079061

| | |
|---------------------|-------|
| Weight (kg) | 0.155 |
| Recessed Depth (mm) | 90 |

PACKAGING

| | |
|---------------------------------------|----------------|
| Product EAN number | 8711971790617 |
| Packaging single length / height (cm) | 13.2 |
| Packaging single width (cm) | 10.0 |
| Packaging single depth (cm) | 8.4 |
| DUN14 (inner) | 18711971790614 |
| Units per outer package | 30 |
| Packaging outer length / height (cm) | 28.4 |
| Packaging outer width (cm) | 28.5 |
| Packaging outer depth (cm) | 53.2 |

SAFETY DATA

| | |
|-------------------------------------|-----|
| Glow Wire Test (°C) | 850 |
| Special purpose lamp | No |
| Dry applications use only | No |
| Suitable for household illumination | No |