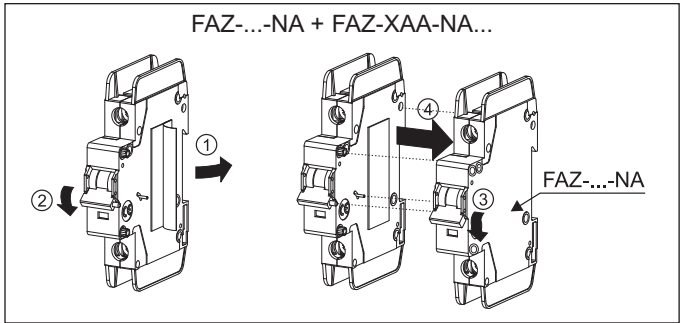
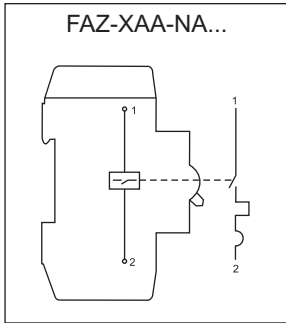


FAZ-XAA-NA...



Cu only mm ²		AWG		12 mm (.50")	Z2	1.0 x 6.5 mm (.040 x .25 in)	2.8 Nm (25 lb-in)
1 x 1 - 6	1 x #18 - #10	2 x 1 - 2 x 6	2 x #18 - 2 x #10				

Allowable Combinations and Positions
Combinaisons et Positions Possible
Zulässige Kombinationen und Positionen
Combinazioni e Posizioni Accettabili
Combinaciones y Posiciones Válidas

