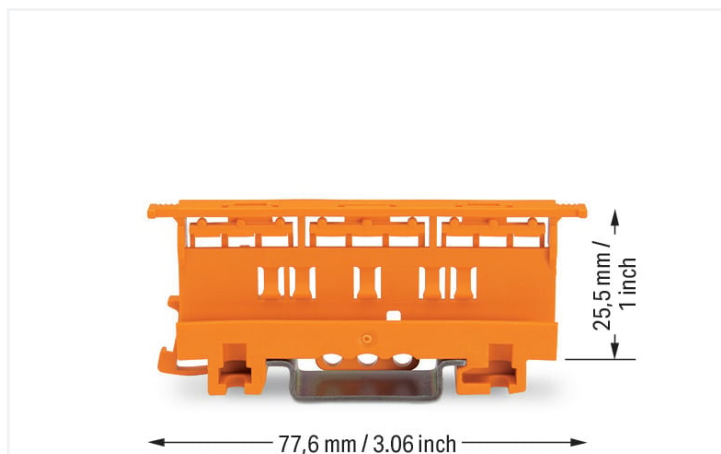


Data Sheet | Item Number: 221-500

Mounting carrier; 221 Series - 4 mm²; for DIN-35 rail mounting/screw mounting;
orange

<https://www.wago.com/221-500>



Color: ■ orange

Physical data

Width	17.5 mm / 0.689 inches
Height	77.6 mm / 3.055 inches
Depth from upper-edge of DIN-rail	25.5 mm / 1.004 inches

Mechanical data

Mounting type	DIN-35 rail Screw mount
Suitable	for 2-, 3- and 5-conductor 221 Series Splicing Connectors (4 mm ²)

Material data

Note (material data)	Information on material specifications can be found here
Color	orange
Material group	I
Insulation material	Polyamide (PA66)
Flammability class per UL94	V0
Fire load	0.294 MJ
Weight	9.8 g

Commercial data

eCl@ss 10.0	27-14-11-92
eCl@ss 9.0	27-14-11-92
ETIM 8.0	EC002848
ETIM 7.0	EC002848
PU (SPU)	50 (10) pcs
Packaging type	Box
Country of origin	CN
GTIN	4055143421942
Customs tariff number	39269097900

Environmental Product Compliance

RoHS Compliance Status Compliant, No Exemption

Downloads

Environmental Product Compliance

Compliance Search	
Environmental Product Compliance 221-500	↓

Documentation

Bid Text			
221-500	19.02.2019	xml 2.72 KB	↓
221-500	23.01.2019	docx 14.58 KB	↓
ausschreiben.de 221-500			↓

CAD/CAE-Data

CAD data	
2D/3D Models 221-500	↓

CAE data	
EPLAN Data Portal 221-500	↓
ZUKEN Portal 221-500	↓

1 Compatible Products

1.1 Optional Accessories

1.1.1 Marking

1.1.1.1 Marking strip



Item No.: 210-833
 Marking strips; 25 m on roll; 6 mm wide;
 plain; Self-adhesive; white

1.1.2 Mounting adapter

1.1.2.1 Mounting accessories



Item No.: 222-510

Angled DIN-rail adapter; in combination with mounting carrier; 221-500 or 222-500; for DIN-35 rail mounting; gray

Item No.: 222-505

Strain relief plate; for mounting carrier; 221 or 222 Series, can be snapped

Installation Notes

Conductor termination



CAGE CLAMP® connection:

Conductor termination with connectors fitted in a mounting carrier

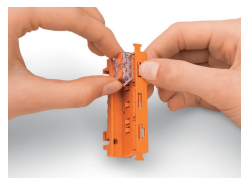
Removing a conductor.



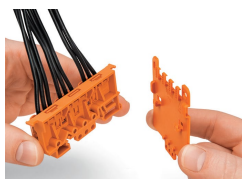
Inserting a connector into the mounting carrier.



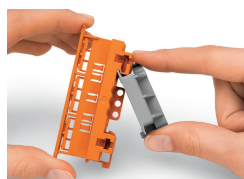
Inserting a connector into the mounting carrier.



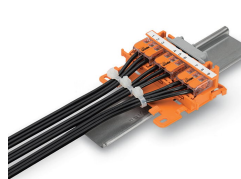
Removing a connector from the mounting carrier.



Securing a strain relief plate (222-505) to the mounting carrier.



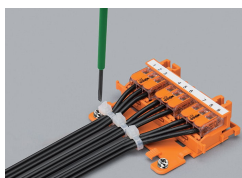
Snapping the angled DIN-rail adapter (222-510) onto the mounting carrier.



Horizontal mounting on DIN-35 rail using an angled DIN-rail adapter



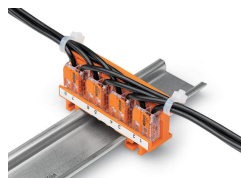
Horizontal mounting on DIN-35 rail using an angled DIN-rail adapter



Horizontal screw mounting with strain relief plate on a flat surface



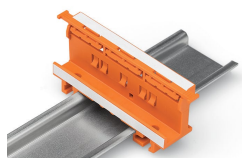
Vertical mounting with strain relief plate on DIN-35 rail



Strain relief via cable ties on the mounting carrier (transverse to the connectors' wiring direction) – clamping units labeled via marking strips (210-334)



Vertical screw mounting with strain relief plate on a flat surface



Mounting carrier on a DIN-35 rail

Testing



Testing connectors via test slots on top of the carrier.