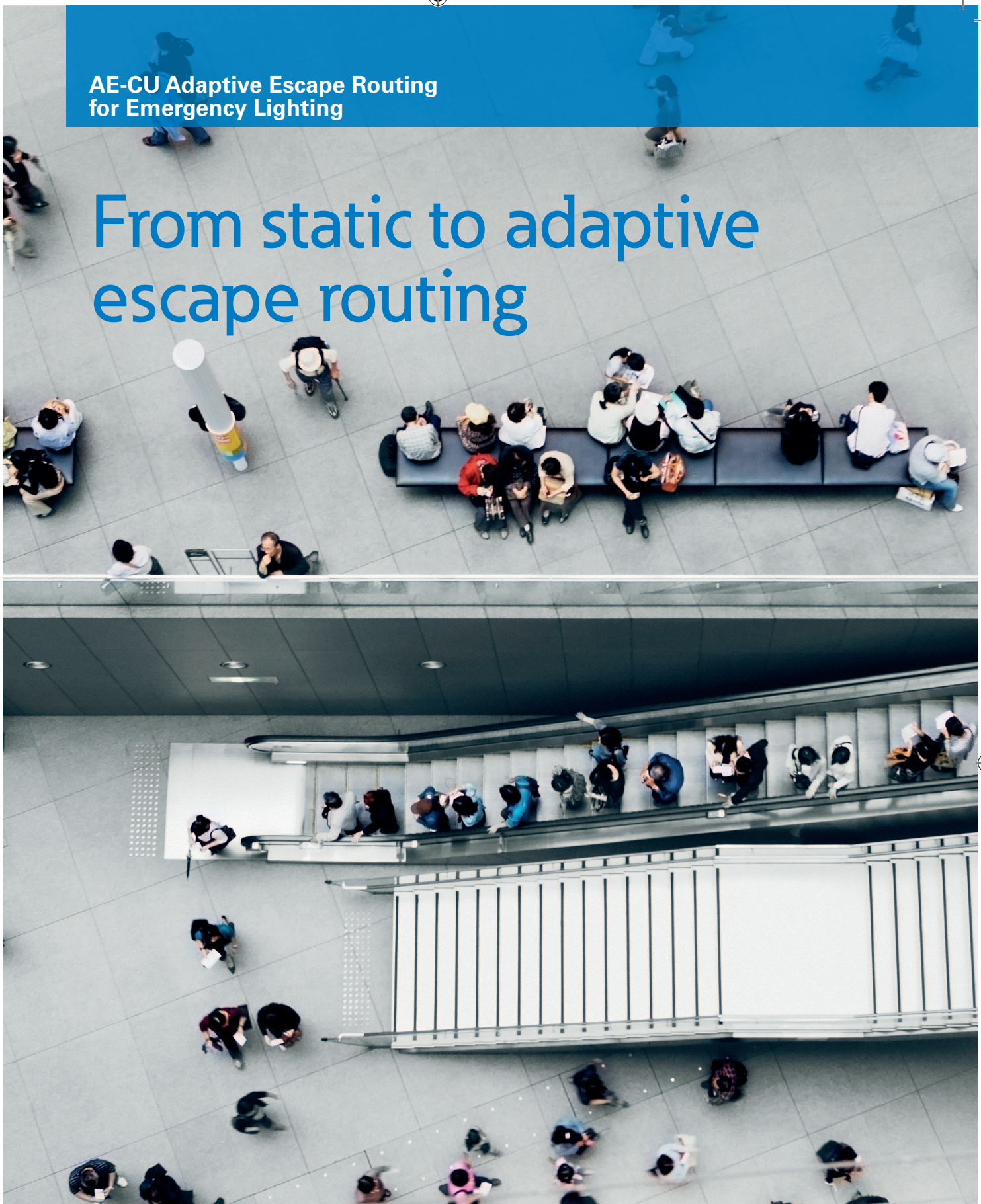


AE-CU Adaptive Escape Routing
for Emergency Lighting

From static to adaptive escape routing



EATON

Powering Business Worldwide



WorkSafe

Protect your people and property

Specify superior escape route management technology in complex buildings with Eaton's unique adaptive **emergency lighting evacuation system**.

Risk management for commercial buildings is evolving rapidly. An increasingly urbanised and complex environment, combined with a rising diversity of safety threats, compels the owners and managers of buildings to re-evaluate the way they protect the people, property and business continuity that may be at risk in an emergency. It is not only a legal obligation but a moral, financial and reputational imperative. In situations involving fire, terrorism, major crime, extreme weather and civil unrest, buildings must be able to detect, alert and evacuate. The safe and timely completion of this process is dependent on planning, equipment, training and infrastructure being in place. However, evacuation poses particular challenges when a proportion of occupants are unfamiliar with layout and procedures, and particularly if they are in large, densely-populated, high-risk or complex premises such as railway stations, shopping centres, airports, stadia, government buildings or leisure facilities. Research into crowd behaviour and advances in scenario-modelling technology have highlighted the need for evacuation strategies that are more adaptable to differing circumstances and buildings. In particular, fixed emergency exit routes, indicated by static signage, can lead to congestion, delays and, in some instances, may direct people towards a hazard. Panic is heightened and decision-making can be impaired. Eaton has developed an Adaptive Evacuation System that is capable of identifying the safest exit route in a given circumstance and guiding people towards it via digital signage. The ability of such systems to enhance safety has been confirmed by academic research and technical organisations.



Adaptive evacuation

Adaptive:
Capable of changing in response to changes in environment.

Building upon decades of expertise in the delivery of life safety systems, and particularly emergency lighting technologies, Eaton's Adaptive Evacuation System enables faster, safer and more agile evacuations, particularly when deployed alongside a public address/voice alarm solution that provides additional guidance. When installed, the system is programmed with a range of potential exit routes. Based on information from CCTV, fire detection and other devices that pinpoint the nature and location of a hazard, it can select the safest and fastest route for occupants and an appointed system operator within the building is given the opportunity to accept or reject this recommendation, so that occupants can be directed accordingly. Unlike 'active' and 'dynamic' systems, Eaton's technology is fully adaptable and its instructions can be modified in real-time. It has been extensively tested and conforms with current regulatory requirements, although the technology is so new that standards are still to be fully defined.

Adaptive escape sign luminaires for building evacuation as a supportive system-technical measure.

Aim of protection:

Safe self-rescue to ensure that rescue forces can take care of injured or disabled persons.

Benefits:

- More efficient, quicker and safer evacuation
- Escape routing adapt continuously to the risk
- Assistance to save oneself
- Relief of the rescuers
- Possible compensation measure for constructional scarcities

Facing the diverse risks of fire, terrorism, violent crime, extreme weather and civil unrest, the owners and managers of commercial buildings must ensure the ability to detect, alert and evacuate, which is dependent on planning, equipment, training and infrastructure being in place. However, evacuation poses additional challenges when occupants may include visitors who are not familiar with layout and procedures, and particularly if they are in large, highly-populated, high-risk or complex premises such as railway stations, shopping centres, airports, stadia, government buildings or leisure facilities. Fixed emergency exit routes, denoted by static signage, are inflexible to changing circumstances and may inadvertently direct people towards danger, as in the case of the deadly attack on Nairobi's Westgate shopping mall in 2013. Building upon decades of expertise in the delivery of life safety systems, Eaton has pioneered the development of an Adaptive Evacuation System, which is capable of switching between a number of predefined routes and guiding people towards the safest available exit in a given scenario.

In hazard situations caused by e.g. fire, attacks, technical plant faults (e.g. gas accidents) and natural catastrophes, only safe escape routes can be used.

Static escape route guidance:

Exit sign luminaires designate the escape route out of the building always in the same direction, **independently** of a danger situation.

no change



Dynamic escape route guidance:

Exit sign luminaires **block** unsafe escape routes in evacuation situations, thereby guiding those fleeing out of the building via the safe escape routes.

State 1



State 2



Adaptive escape route guidance:

Exit sign luminaires **block** unsafe escape routes and **release these as soon as they become safe again**. This enables dynamic hazard situations (e.g. in case of fire or attacks) to be flexibly responded to.

Normal



Blocked



Open again

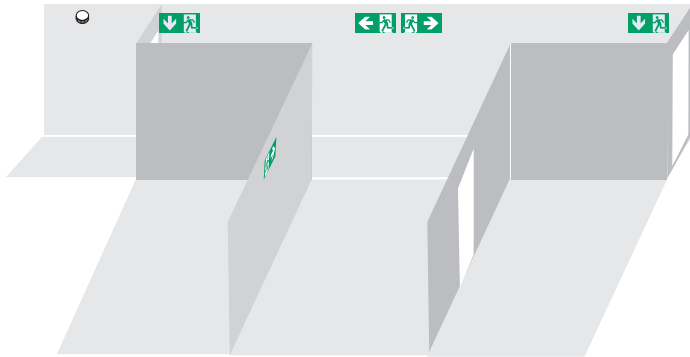


Adaptive Evacuation

Benefits of adaptive Evacuation

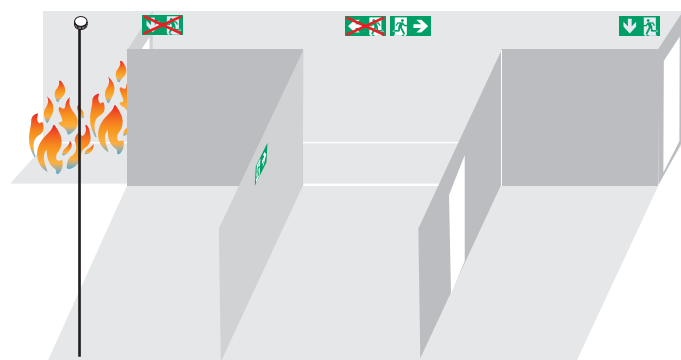
Representation of an adaptive Evacuation:

Before the occurrence:



Exit sign luminaires shows the fastest exit route.

During the occurrence:

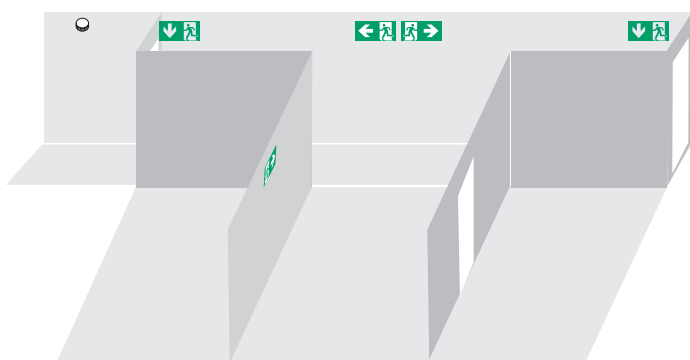


Exit sign luminaires block the unsafe exit route as they receive an information of e.g. a Fire detector, video monitoring, locking systems, evacuation systems. The safest exit route out of the building is now shown.

Alarm e.g. via:

Fire detector,
video monitoring,
locking systems,
evacuation systems

After the occurrence:



Once the exit route is open again, the exit sign luminaires shows it. Therefore it can be flexible and dynamic reacted on hazard e.g. fire or attacks.

Benefits of adaptive Evacuation:



- AE-CU technology in combination with GuideLed DXC exit sign luminaires enable dynamic danger situations such as in cases of fire, attacks or natural catastrophes to be actively responded to
- Decentral configuration of the AE-CU for up to 240 GuideLed DXC exit sign luminaires. This enables flexible, low-cost planning.
- Short circuit and open circuit resistant loop bus technology. This means no E30 cable routing of the loop bus line is required because these are fail-safe with the first fault case.
- Separate operating units for safety lighting and for the programming of scenarios provides increased safety with subsequent modifications.
- Due to separate cable routing of the 230V end circuits and 24V loop bus line to the adaptive GuideLed DXC exit sign luminaires, the hybrid operation of static and adaptive exit sign luminaires and the integration of escape luminaires and luminaires for general lighting is possible in the same circuit.
- An integrated search function automatically detects all GuideLed DXC exit sign luminaires connected up during installation.
- Self-addressing of the connected DXC luminaires simplifies the process for installation and commissioning.
- The control unit with nonvolatile program memory and large touch display automatically monitors and controls all components in the AE-CU system as well as the functionality of the connected adaptive luminaires.
- Connection of central visualization is possible via an interface.
- Networking the AE-CU with EATON fire detection technology provides system integrity between alerting and evacuation
- Already installed DualGuard-S systems could be expanded with the AE-CU

Adaptive Evacuation

Performance



From static to adaptive escape route guidance

System-technical measures for ensuring self-rescue in cases of evacuation have top priority in dynamic hazard situations. AE-CU technology in combination with GuideLed DXC exit sign luminaires enable dynamic danger situations such as in cases of fire, attacks or natural catastrophes to be actively responded to. The shortest route out of a building is not always the safest.

The AE-CU system reliably triggers up to 240 adaptive exit sign luminaires via a short circuit and open circuit resistant loop bus.

The hazard scenario can be freely assigned to each adaptive exit sign luminaire via the AE-CU.

The control unit with nonvolatile program memory and large touch display automatically monitors and controls all components in the AE-CU system as well as the functionality of the connected adaptive luminaires. Faults occurring are shown on the display, forwarded via signal contacts and saved to an inspection book.

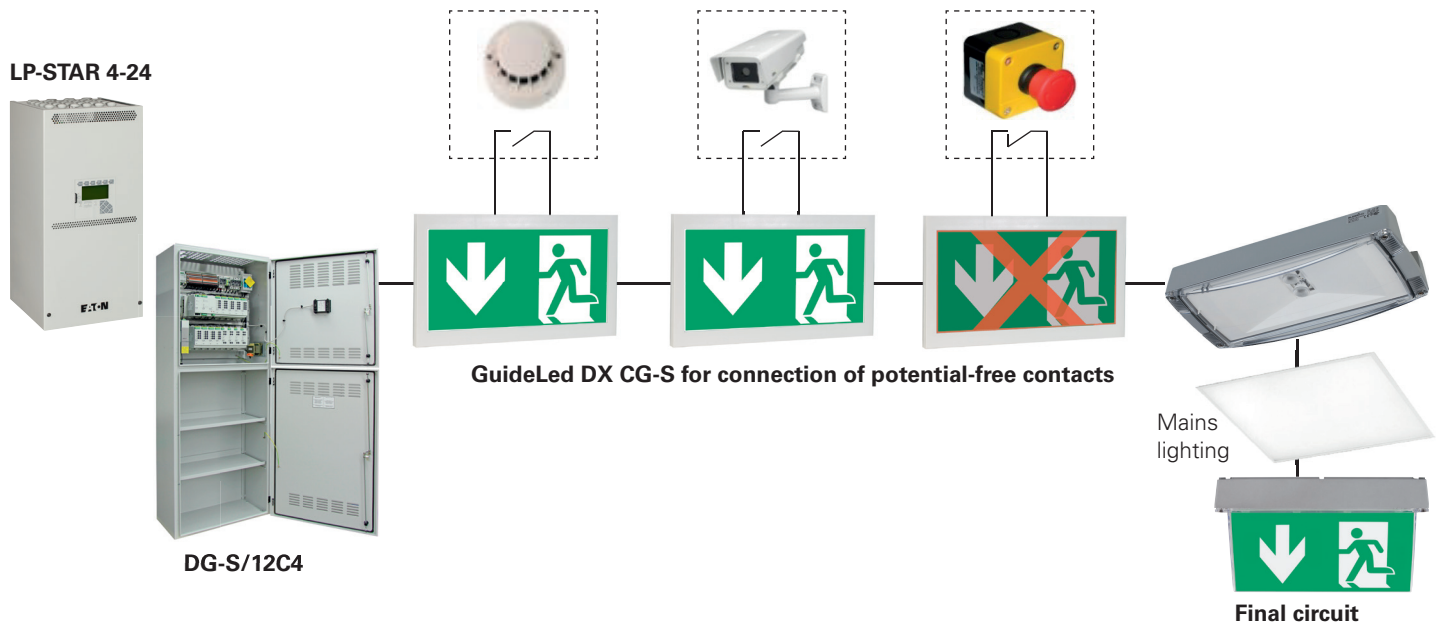
An integrated search function automatically detects all GuideLed DXC exit sign luminaires connected up during installation. Connection of central visualization is possible via an interface.

The solution for simple structured applications

Application example:

Triggering of GuideLed DX luminaires via potential-free contacts:

Potential-free signal contacts of fire detectors, CCTV or key switches to indicate areas as „locked, blocked or unsafe“. As an example for areas where entry is forbidden for a specific time due to construction measures. Parallel connection of the DX inputs is not possible.

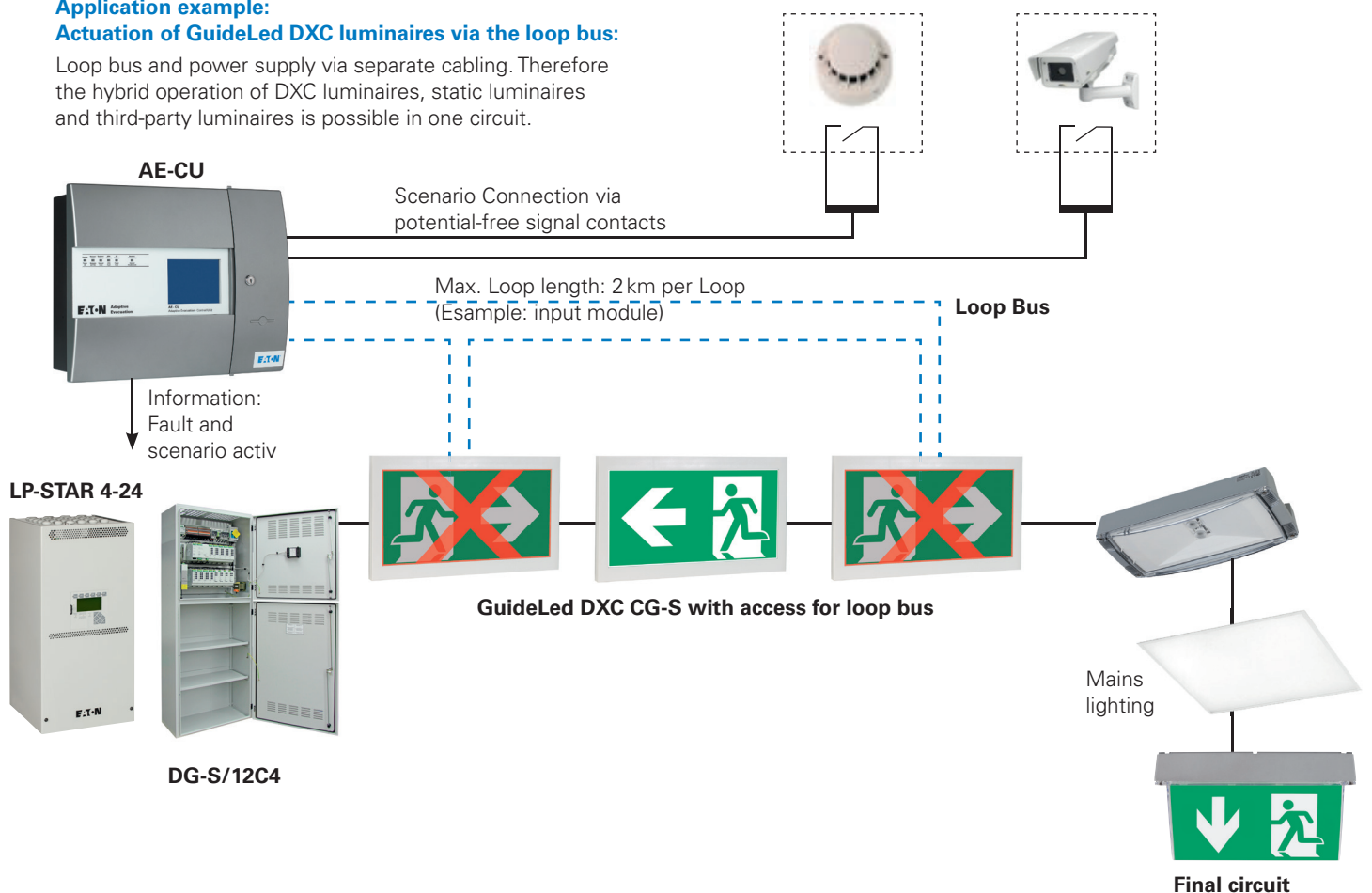


The solution for simple and complex structured applications

Application example:

Actuation of GuideLed DXC luminaires via the loop bus:

Loop bus and power supply via separate cabling. Therefore the hybrid operation of DXC luminaires, static luminaires and third-party luminaires is possible in one circuit.



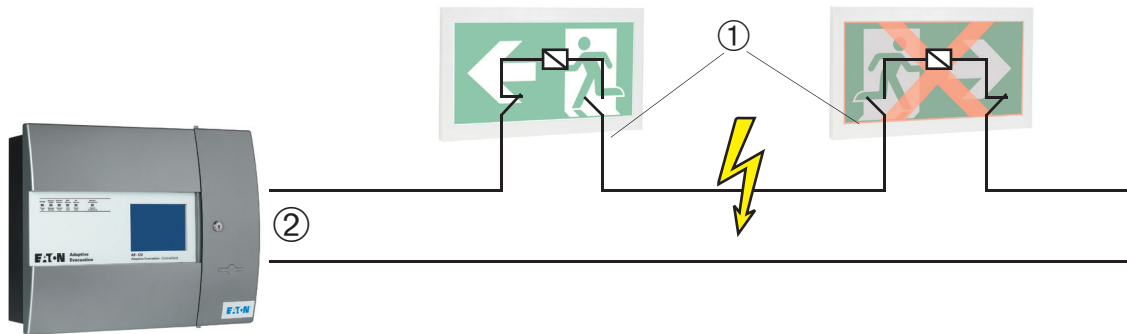
Adaptive Evacuation

control matrix

Application example:

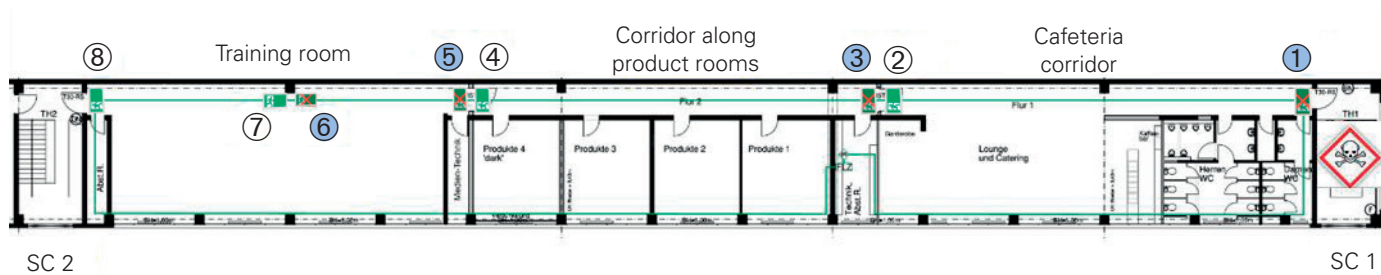
Short circuit and open circuit resistant loop bus technology

- ① short circuit-isolated separation
- ② **still** safeguarded via loop communication after isolation of the short circuit

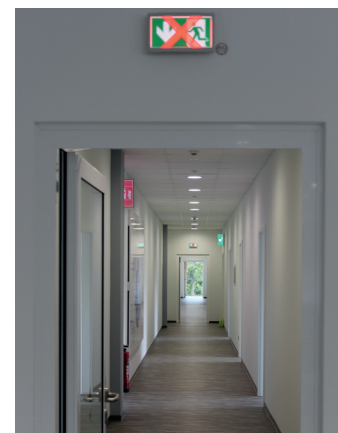
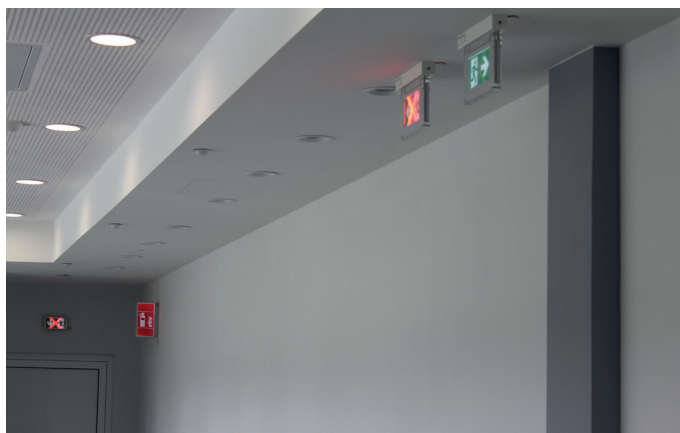


AE-CU control matrix

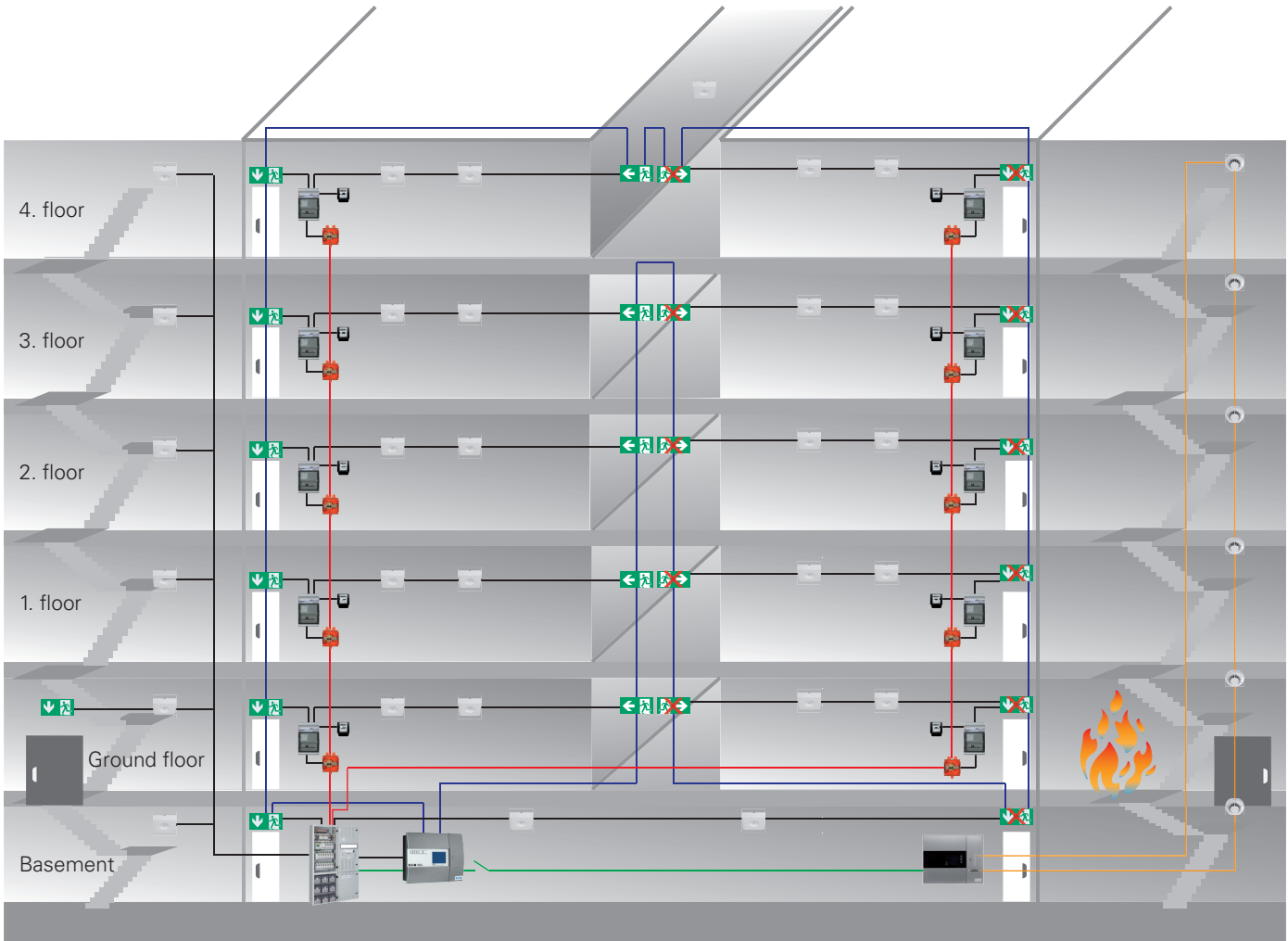
Example: Client training center at a workplace














No.	Luminaire description:	Scenario:	SC 1 blocked	Corridor 1 + Cafeteria blocked	Corridor 2 + product rooms blocked	Training room blocked	SC 2 blocked
①	Corridor 1, at door to SC 1		X				
②	Corridor 1, at door to corridor 2				X	X	X
③	Corridor 2, at door to corridor 1		X	X			
④	Corridor 2, at door to training room					X	X
⑤	Training room at door to corridor 2		X	X	X		
⑥	Training room middle direction corridor 2		X	X	X		
⑦	Training room middle direction SC 2						X
⑧	Training room at door to SC 2						X



Adaptive evacuation – installation example



* Due to simplification, only one circuit is shown pro fire zone/staircase/flat

- | | | | |
|---|---------------------------------------|---|----------------------|
|  | = adaptive exit sign luminaire |  | = Luminaire circuit* |
|  | = active adaptive exit sign luminaire |  | = loop bus |
|  | = escape luminaire |  | = fire detection bus |
|  | = central fire alarm system |  | = E30 cable |
|  | = fire detector |  | = detection scenario |
|  | = meter reader | | |

Adaptive Evacuation

AE-CU-W wall housing

AE-CU-W



AE-CU-W

Adaptive Evacuation Control Unit for wall mounting with integrated battery-supported power supply using loop technique for controlling addressable adaptive exit sign luminaires with 230V / 216V AC/DC technology for safety lighting systems acc. to DIN VDE 0100-560, DIN EN 50172 and V DIN VDE 0108-100. With automatic testing device and monitoring of loop bus communication and individual display of condition and name of loop BUS connection per GuideLed DXC luminaire.

- Adaptive system – Escape routing adapt continuously to the risk
- Self-addressing of the connected DXC luminaires simplifies the process for installation and commissioning
- Simple handling by Touch Display and optional PC programming software
- AE-CU for the adaptive control of up to 240 GuideLed DXC luminaires
- Four short circuit and open circuit resistant loop lines each with 60 GuideLED DXC luminaires
- Two scenarios freely programmable for building evacuation, factory provided integrated. More than two scenarios on request
- A maximum of six DualGuard-S/US-S or LP-STAR systems can be connected per AE-CU. More than six DualGuard-S or LP-STAR systems on request
- Automatic software address-setting of all GuideLed DXC luminaires for scenario control
- Number of scenarios could be extended via scenario boxes with 8 or 16 scenarios
- Number of scenario inputs individual extendable
- Functionality also at power failure by inbuilt battery supply
- Universal applicable and with hazard alert systems combinable by potential free scenario inputs
- No E30 cable routing of the loop bus line is required because these are fail-safe with the first fault case

Primary rated voltage	230 V AC +10%, -15%
Primary rated current	75 mA
Nominal frequency	50 Hz
Protection rating	IP 30
Insulation class	I
Ambient temperature	-5°C to +40°C
Secondary rated voltage	18,5 V - 29,5 V
Battery	2 x 12 V / 12 Ah
Max. battery current	3.5 A
Charge characteristic	Constant voltage temperature-compensated
Min. backup power time	30 h
Weight with battery	14 kg
Dimensions (HxWxD in mm)	395 x 495 x 180
Basic housing material	Sheet steel, powder-coated
Material of front	Plastic
Inputs	
Addressable loop line	4
Scenario active inputs	2 (more on request)
Maximum ring length	2,000 m / I(ST)Y 4 x 2 x 0.8 mm
Maximum number of GuideLed DXC luminaires per loop	60
Outputs	
Zero-potential changeover contact	2
Contact load	24 V / 1 A
Fuse	1.35 A

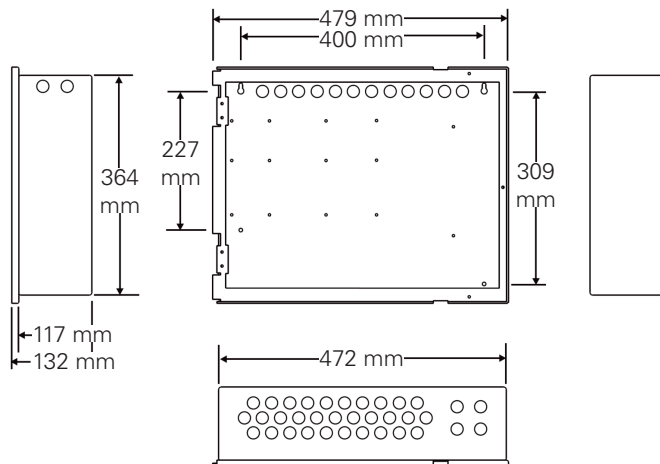
Ordering details

Type	Scope of supply	Order No.
AE-CU-W	Surface- / Recessed mounted wall housing	40071361359

Adaptive Evacuation

AE-CU-W wall housing

Dimensions in mm



1 LED displays:

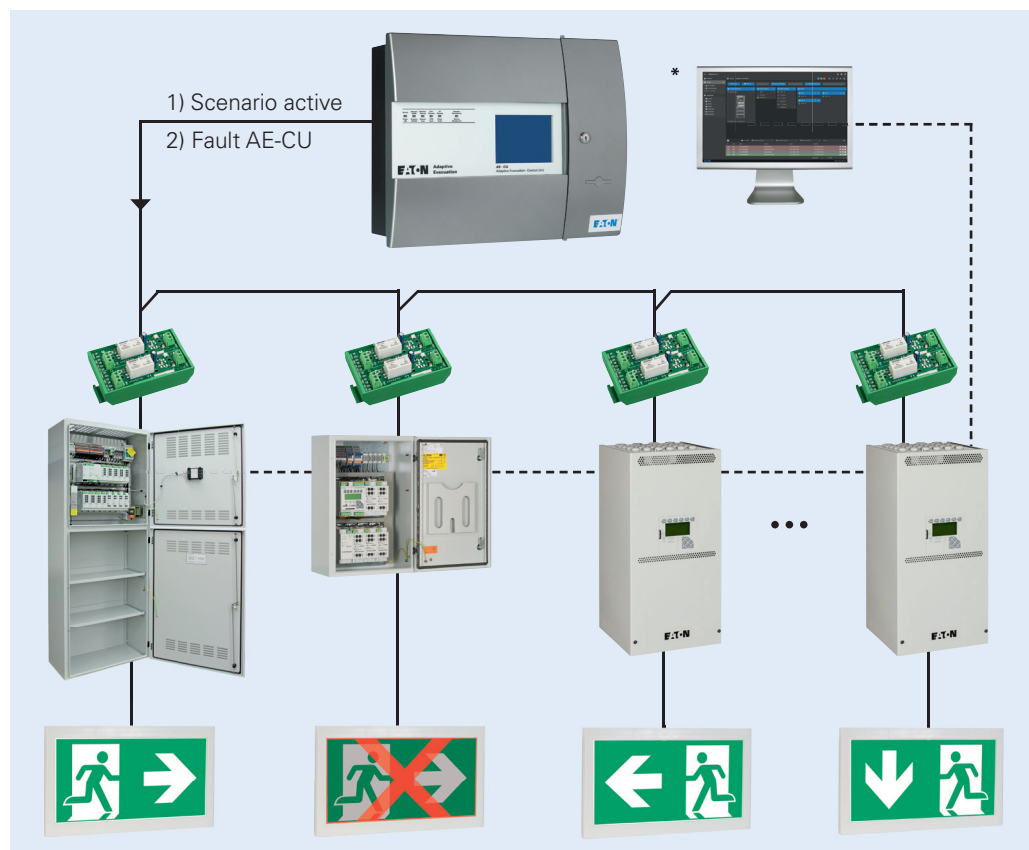
Power On, Scenario Active, General Fault, CPU Fault, Power Fault, General Disablement

2 Touch display, operating messages:

Scenario Active, Fault, Disablement

3 Fault messages:

Battery fault (AE-CU wall assembly), double address, earth fault, loop short circuit, charge fault, mains fault, loop communication fault, loop driver fault, trouble fault relay, CPU fault, loop overload, loop break at address, break-loop +loop

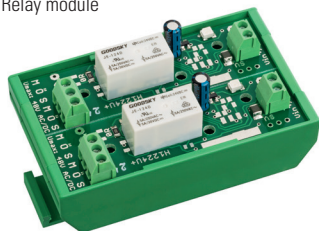


* Simplified presentation of a VisionGuard the messages „Scenario active“ and „sum failure AE-CU“are shown on the control unit of the systems and on the VisionGuard. This messages are also listed in the test book with date and time.

Adaptive Evacuation

AE-CU Interface

Relay module



Relay module

Information units ,scenario active' and ,fault' are reported to the DualGuard-S by the AE-CU via the relay module (installed in a DualGuard-S/US-S). Six DualGuard-S/US-S can be connected per AE-CU. More on request.

Ordering details

Type	Scope of supply	Order No.
Relay module	Relay module connection set for use per DualGuard-S/US-S for connection to a AE-CU	40071361422

*Note: Relay module must be mounted externally at sub stations with functional integrity.



Adaptive Evacuation – AE-CU-W and AE-CU-E

Description

AE-CU-W



AE-CU-W

Adaptive Evacuation Control Unit AE-CU-W for wall mounting with integrated battery-supported power supply using loop technique for controlling addressable adaptive exit sign luminaires with 230V / 216V AC/DC technology for safety lighting systems acc. to DIN VDE 0100-560, DIN EN 50172 and V DIN VDE 0108-100. With automatic testing device and monitoring of loop bus communication and individual display of condition and name of loop BUS connection per GuideLed DXC luminaire.

Developed, manufactured and tested according to ISO 9001.

Pre-equipped for connection of 4 short circuit-resistant and open circuit resistant, fail-safe loop lines each for control of 60 adaptive exit sign luminaires and recording of two scenarios (more scenarios on request).

Free assignment of two scenarios for each individual adaptive exit sign luminaire via RS 232 interface and Windows-based configuration software.

Touchscreen display for display of operating states and operation of the controller.

Slot for network card

2 monitored outputs for scenario active for BMS connection

1 potential-free changeover contact General fault for BMS connection

1 x RS 232 interface

1 interface for optional protocol printer

Earth fault monitoring

Technical data:

Mains voltage: 230 V AC / 50 Hz

Power supply unit: 24 V DC / 3.0 A

Emergency power supply: 2 x 12 V / 12 Ah

Dimensions: W 497 x H 397 x D 180 mm

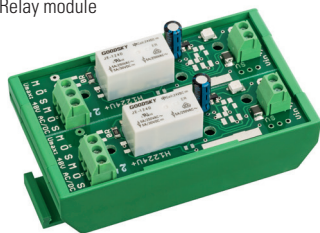
Type: CEAG AE-CU-W

Manufacturer: EATON

Adaptive Evacuation – AE-CU-W and AE-CU-E

Description

Relay module



Relay module

Relay module for top hat rail installation, for connection of a central battery system of type DualGuard-S to the AE-CU via two zero-potential changeover contacts. With LED display for switching state of the relay.

Technical data:

Operating voltage:
22 V DC to 26 V DC

Current consumption:
7-9 mA

Ambient temperature:
-0°C to +55°C

SELV protection

Material: PCB material, PC for the plastic parts

Maximum of six relay modules per AE-CU

Dimensions:
H 77 x W 45 x D 40 mm

Type: CEAG Relay module

Manufacturer: EATON

Programming, commissioning and instruction

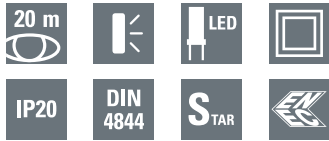
Programming and commissioning of the AE-CU by CEAG Service after successful installation by the electrical contractor and presentation of the scenario control matrix. Instruction of operating personnel regarding AE-CU device functionality.

Type: Programming, commissioning and instruction

Manufacturer: EATON

Adaptive Evacuation – Luminaires

GuideLed DX 10011 CG-S



GuideLed DX 10011 CG-S

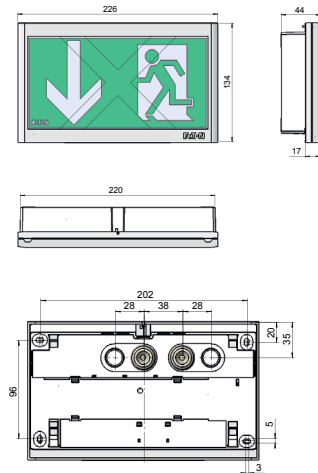
- Escape sign luminaire with LED Lightguide technology for wall-mounting
- Additional function: Displaying a red 'X' to signify an area as closed or blocked
- **DX: activation via a switching input on the supply module e.g. smoke detector or panic switch via potential free contact**
- For adaption to the respective ambient conditions, the power supply module is equipped with different selectable operating modes, e.g. static or flashing red 'X'
- Very good perceptibility on account of high luminance of the white contrasting colour > 500 cd/m² in keeping with standard ISO 3864-1 and high uniformity L_{min}/L_{max} > 0.8
- Reduced battery costs on account of especially low power consumption
- Minimum service requirement due to high service life of the LEDs (50,000 hours)
- Installation of the LED pictogram without tools on the mounting set
- Without power supply: still visible pictogramm

GuideLed DX 10011 CG-S



Viewing distance	20 m
Luminous Φ_E/Φ_N at the end of rated operating time (EBLF)	100 %
Housing material	PC, PMMA
Housing colour	Light grey RAL 7035
Weight	0.65 kg
Type of mounting	Wall mounting
Connection terminal	Mains 3 x 2 x 2.5 mm ² Switch input 2 x 2 x 1.5 mm ²
Connection voltage	220 - 240 V AC, 50/60 Hz 176 V - 275 V DC
Current consumption - battery operation (220 V)	7 mA
Power consumption mains operation (apparent power / effective power)	4.7 VA / 2.2 W
Inrush current	1.5 A
Permissible ambient temperature	-20 °C to +40 °C
Light source	LED batten

Dimensions in mm



Please observe a distance of 10 mm above for mounting!

Ordering details - fastening set

Type	Scope of supply (LED pictograms must ordered separete)	Order No.
GuideLed DX 10011 CG-S	Wall mounting set for GuideLed DX 10011 CG-S, Surface mounting, including LED supply with additional switching input and CG-S technology (20 addresses)	40071354646

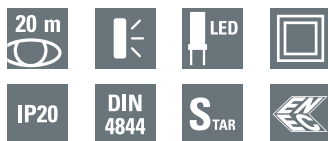
Ordering details - LED pictograms (fastening set required)

Type	Scope of supply	Order No.
PL acc. to ISO 7010 ¹	LED piktogram for GuideLed DX/DXC 10011 CG-S, arrow left (PL), acc. to ISO 7010, 20 m	40071355550
PR acc. to ISO 7010 ¹	LED piktogram for GuideLed DX/DXC 10011 CG-S, arrow right (PR), acc. to ISO 7010, 20 m	40071355551
PU acc. to ISO 7010 ¹	LED piktogram for GuideLed DX/DXC 10011 CG-S, arrow down (PU), acc. to ISO 7010, 20 m	40071355552
PO acc. to ISO 7010 ¹	LED piktogram for GuideLed DX/DXC 10011 CG-S, arrow up (PO), acc. to ISO 7010, 20 m	40071355553

¹ with additional option: red X

Adaptive Evacuation – Luminaires

GuideLed DXC 10011 CG-S



GuideLed DXC 10011 CG-S

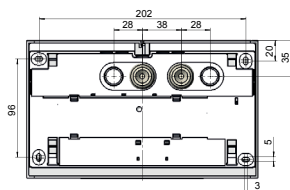
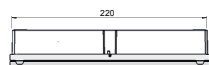
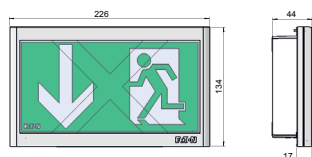
- Escape sign luminaire with LED Lightguide technology for wall-mounting
- Additional function: Displaying a red 'X' to signify an area as closed or blocked
- **DXC: for connection to the adaptive evacuation system EATON AE-CU via an integrated bus module**
- For adaption to the respective ambient conditions, the power supply module is equipped with different selectable operating modes, e.g. static or flashing red 'X'
- Very good perceptibility on account of high luminance of the white contrasting colour > 500 cd/m² in keeping with standard ISO 3864-1 and high uniformity L_{min}/L_{max} > 0.8
- Reduced battery costs on account of especially low power consumption
- Minimum service requirement due to high service life of the LEDs (50,000 hours)
- Installation of the LED pictogram without tools on the mounting set
- Without power supply: still visible pictogramm

GuideLed DXC 10011 CG-S



Viewing distance	20 m
Luminous Φ_E/Φ_N at the end of rated operating time (EBLF)	100 %
Housing material	PC, PMMA
Housing colour	Light grey RAL 7035
Weight	0.7 kg
Type of mounting	Wall mounting
Connection terminal	Mains 3 x 2 x 2.5 mm ² Bus interface 2 x 2 x 1.5 mm ²
Connection voltage	220 - 240 V AC, 50/60 Hz 176 V - 275 V DC
Current consumption - battery operation (220 V)	7 mA
Power consumption mains operation (apparent power / effective power)	4.7 VA / 2.2 W
Inrush current	1.5 A
Permissible ambient temperature	-20 °C to +40 °C
Light source	LED batten

Dimensions in mm



Please observe a distance of 10 mm above for mounting!

Ordering details - fastening set

Type	Scope of supply (LED pictograms must ordered separte)	Order No.
GuideLed DXC 10011 CG-S	Wall mounting set for GuideLed DXC 10011 CG-S, surface mounting, including LED supply and CG-S technology (20 addresses), with integrated bus interface for connection to an AE-CU	40071355085

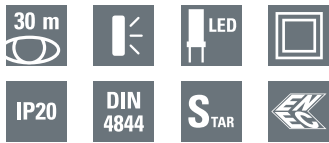
Ordering details - LED pictograms (fastening set required)

Type	Scope of supply	Order No.
PL acc. to ISO 7010 ¹	LED piktoqram for GuideLed DX/DXC 10011 CG-S, arrow left (PL), acc. to ISO 7010, 20 m	40071355550
PR acc. to ISO 7010 ¹	LED piktoqram for GuideLed DX/DXC 10011 CG-S, arrow right (PR), acc. to ISO 7010, 20 m	40071355551
PU, acc. to ISO 7010 ¹	LED piktoqram for GuideLed DX/DXC 10011 CG-S, arrow down (PU), acc. to ISO 7010, 20 m	40071355552
PO acc. to ISO 7010 ¹	LED piktoqram for GuideLed DX/DXC 10011 CG-S, arrow up (PO), acc. to ISO 7010, 20 m	40071355553

¹ with additional option: red X

Adaptive Evacuation – Luminaires

GuideLed DX 11011 CG-S



GuideLed DX 11011 CG-S

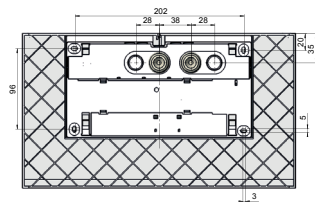
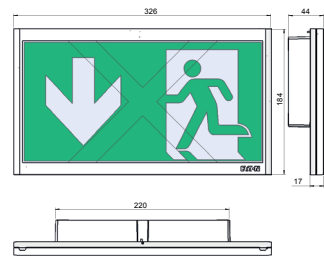
- Escape sign luminaire with LED Lightguide technology for wall-mounting
- Additional function: Displaying a red 'X' to signify an area as closed or blocked
- **DX: activation via a switching input on the supply module e.g. smoke detector or panic switch via potential free contact**
- For adaption to the respective ambient conditions, the power supply module is equipped with different selectable operating modes, e.g. static or flashing red 'X'
- Very good perceptibility on account of high luminance of the white contrasting colour > 500 cd/m² in keeping with standard ISO 3864-1 and high uniformity L_{min}/L_{max} > 0.8
- Reduced battery costs on account of especially low power consumption
- Minimum service requirement due to high service life of the LEDs (50,000 hours)
- Installation of the LED pictogram without tools on the mounting set
- Without power supply: still visible pictogramm

GuideLed DX 11011 CG-S



Viewing distance	30 m
Luminous Φ_E/Φ_N at the end of rated operating time (EBLF)	100 %
Housing material	PC, PMMA
Housing colour	Light grey RAL 7035
Weight	0.79 kg
Type of mounting	Wall mounting
Connection terminal	Mains 3 x 2 x 2.5 mm ² Switch input 2 x 2 x 1.5 mm ²
Connection voltage	220 - 240 V AC, 50/60 Hz 176 V - 275 V DC
Current consumption - battery operation (220 V)	12 mA
Power consumption mains operation (apparent power / effective power)	5.9 VA / 3.1 W
Inrush current	1.5 A
Permissible ambient temperature	-20 °C to +40 °C
Light source	LED batten

Dimensions in mm



Please observe a distance of 10 mm above for mounting!

Ordering details - fastening set

Type	Scope of supply (LED pictograms must ordered sepearte)	Order No.
GuideLed DX 11011 CG-S	Wall mounting set for GuideLed DX 11011 CG-S, surface mounting, including LED supply with additional switching input and CG-S technology (20 addresses)	40071354646

Ordering details - LED pictograms (fastening set required)

Type	Scope of supply	Order No.
PL acc. to ISO 7010 ¹	LED piktogram for GuideLed DX/DXC 11011 CG-S, arrow left (PL), acc. to ISO 7010, 30 m	40071355555
PR acc. to ISO 7010 ¹	LED piktogram for GuideLed DX/DXC 11011 CG-S, arrow right (PR), acc. to ISO 7010, 30 m	40071355556
PU, acc. to ISO 7010 ¹	LED piktogram for GuideLed DX/DXC 11011 CG-S, arrow down (PU), acc. to ISO 7010, 30 m	40071355365
PO acc. to ISO 7010 ¹	LED piktogram for GuideLed DX/DXC 11011 CG-S, arrow up (PO), acc. to ISO 7010, 30 m	40071355558

¹ with additional option: red X

Adaptive Evacuation – Luminaires

GuideLed DX 10021, 10022, 10023, 10024 CG-S



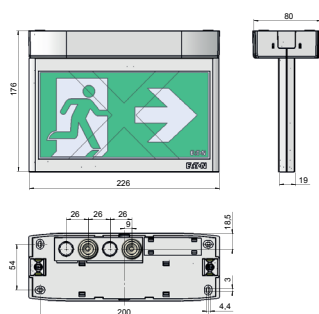
GuideLed DX 10021, 10022, 10023, 10024 CG-S

- Escape sign luminaire with LED Lightguide technology for wall-mounting
- Additional function: Displaying a red 'X' to signify an area as closed or blocked
- **DX: activation via a switching input on the supply module e.g. smoke detector or panic switch via potential free contact**
- For adaption to the respective ambient conditions, the power supply module is equipped with different selectable operating modes, e.g. static or flashing red 'X'
- Very good perceptibility on account of high luminance of the white contrasting colour > 500 cd/m² in keeping with standard ISO 3864-1 and high uniformity L_{min}/L_{max} > 0.8
- Reduced battery costs on account of especially low power consumption
- Minimum service requirement due to high service life of the LEDs (50,000 hours)
- Without power supply: still visible pictogramm

GuideLed DX 10021 CG-S



Dimensions in mm

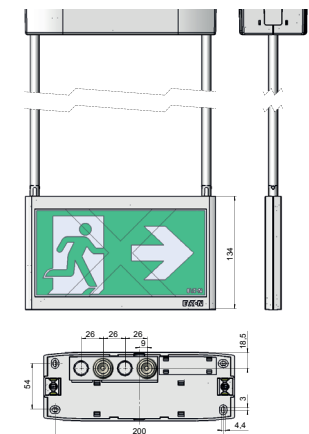


Viewing distance	20 m
Luminous Φ_E/Φ_N at the end of rated operating time (EBLF)	100 %
Housing material	PC, PMMA
Housing colour	Light grey RAL 7035
Weight	0.68 kg (10021 LED CG-S) 0.77 kg (10022 LED CG-S) 0.95 kg (10023 LED CG-S) 1.03 kg (10024 LED CG-S)
Type of mounting	Ceiling, suspended, recessed installation mounting
Connection terminal	Mains 3 x 2 x 2.5 mm ² Switch input 2 x 2 x 1.5 mm ²
Connection voltage	220 - 240 V AC, 50/60 Hz 176 V - 275 V DC
Current consumption - battery operation (220 V)	one-sided 7 mA two-sided 12 mA
Power consumption mains operation (apparent power / effective power)	one-sided 4.7 VA / 2.2 W two-sided 6.0 VA / 3.1 W
Inrush current	1.5 A
Permissible ambient temperature	-20 °C to +40 °C
Light source	LED batten

GuideLed DX 10022 CG-S



Dimensions in mm



Ordering details - fastening set

Scope of supply (LED pictograms must ordered separate)	Order No.
Ceiling installation set for GuideLed DX10021 CG-S with canopy incl. LED supply with additional switching input and CG-S technology (20 addresses)	40071355295
Ceiling installation set for GuideLed 10022 DX CG-S with canopy and tube suspension 0.5 m, incl. LED supply with additional switching input and CG-S technology (20 addresses)	40071355481
Ceiling installation set for GuideLed 10023 DX CG-S with canopy and tube suspension 1.5 m, incl. LED supply with additional switching input and CG-S technology (20 addresses)	40071355482
Ceiling installation set for GuideLed 10024 DX CG-S incl. recessed installation housing incl. LED supply with additional switching input and CG-S technology (20 addresses)	40071355483

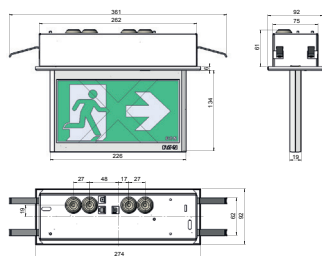
Adaptive Evacuation – Luminaires

GuideLed DX 10021, 10022, 10023, 10024 CG-S

GuideLed DX 10024 CG-S



Dimensions in mm



Ordering details - LED pictograms (fastening set required)

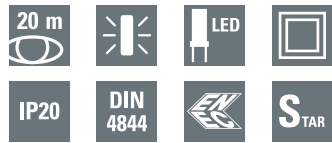
Scope of supply		Order No.
LED piktogram PL/PR, for GuideLed DX/DXC 10021/10022/10023/10024 CG-S, ISO 7010 ¹ , 20 m		40071355330
LED piktogram PU/PU, for GuideLed DX/DXC 10021/10022/10023/10024 CG-S, ISO 7010 ¹ , 20 m		40071355531
LED piktogram PL/BL, for GuideLed DX/DXC 10021/10022/10023/10024 CG-S, ISO 7010 ¹ , 20 m		40071355532
LED piktogram PR/BL, for GuideLed DX/DXC 10021/10022/10023/10024 CG-S, ISO 7010 ¹ , 20 m		40071355533
LED piktogram PU/BL, for GuideLed DX/DXC 10021/10022/10023/10024 CG-S, ISO 7010 ¹ , 20 m		40071355534
LED piktogram PL/PR-R**, for GuideLed DX/DXC 10021/10022/10023/10024 CG-S, ISO 7010 ¹ , 20 m		40071355535
LED piktogram PL/PR-W**, for GuideLed DX/DXC 10021/10022/10023/10024 CG-S, ISO 7010 ¹ , 20 m		40071355536

¹ with additional option: red X

** R = Arrow from mounting wall
W = Arrow to mounting wall

Adaptive Evacuation – Luminaires

GuideLed DXC 10021, 10022, 10023, 10024 CG-S



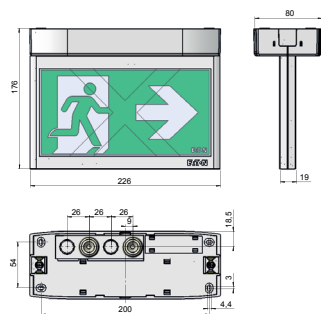
GuideLed DXC 10021, 10022, 10023, 10024 CG-S

- Escape sign luminaire with LED Lightguide technology for wall-mounting
- Additional function: Displaying a red 'X' to signify an area as closed or blocked
- **DXC: for connection to the adaptive evacuation system EATON AE-CU via an integrated bus module**
- For adaption to the respective ambient conditions, the power supply module is equipped with different selectable operating modes, e.g. static or flashing red 'X'
- Very good perceptibility on account of high luminance of the white contrasting colour > 500 cd/m² in keeping with standard ISO 3864-1 and high uniformity L_{min}/L_{max} > 0.8
- Reduced battery costs on account of especially low power consumption
- Minimum service requirement due to high service life of the LEDs (50,000 hours)
- Without power supply: still visible pictogramm

GuideLed DXC 10021 CG-S



Dimensions in mm

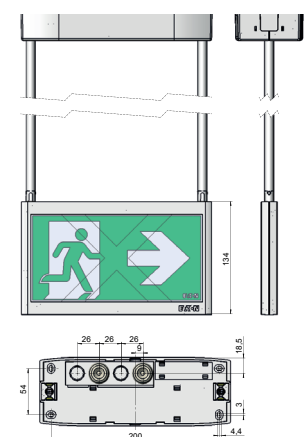


Viewing distance	20 m
Luminous Φ_E/Φ_N at the end of rated operating time (EBLF)	100 %
Housing material	PC, PMMA
Housing colour	Light grey RAL 7035
Weight	0.68 kg (10021 LED CG-S) 0.77 kg (10022 LED CG-S) 0.95 kg (10023 LED CG-S) 1.03 kg (10024 LED CG-S)
Type of mounting	Ceiling, suspended, recessed installation
Connection terminal	Mains 3 x 2 x 2.5 mm ² Bus interface 2 x 2 x 1.5 mm ²
Connection voltage	220 - 240 V AC, 50/60 Hz 176 V - 275 V DC
Current consumption - battery operation (220 V)	one-sided 7 mA two-sided 12 mA
Power consumption mains operation (apparent power / effective power)	one-sided 4.7 VA / 2.2 W two-sided 6.0 VA / 3.1 W
Inrush current	1.5 A
Permissible ambient temperature	-20 °C to +40 °C
Light source	LED batten

GuideLed DXC 10022 CG-S



Dimensions in mm



Ordering details - fastening set

Scope of supply (LED pictograms must ordered separate)	Order No.
Ceiling installation set for GuideLed DXC 10021 CG-S with canopy incl. LED supply and CG-S technology (20 addresses), with integrated bus interface for connection to an AE-CU	40071355488
Ceiling installation set for GuideLed DXC 10022 CG-S with canopy and tube suspension 0.5 m incl. LED supply and CG-S technology (20 addresses), with integrated bus interface for connection to an AE-CU	40071355489
Ceiling installation set for GuideLed DXC 10023 CG-S with canopy and tube suspension 1.5 m incl. LED supply and CG-S technology (20 addresses), with integrated bus interface for connection to an AE-CU	40071355490
Ceiling installation set for GuideLed DXC 10024 CG-S incl. recessed installation housing incl. LED supply and CG-S technology (20 addresses), with integrated bus interface for connection to an AE-CU	40071355491

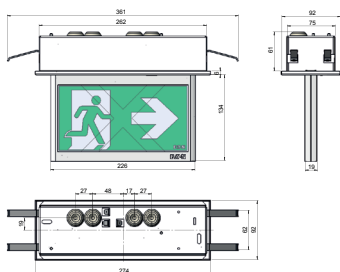
Adaptive Evacuation – Luminaires

GuideLed DXC 10021, 10022, 10023, 10024 CG-S

GuideLed DXC 10024 CG-S



Dimensions in mm



Ordering details - LED pictograms (fastening set required)

Scope of supply		Order No.
LED piktogram PL/PR, for GuideLed DX/DXC 10021/10022/10023/10024 CG-S, ISO 7010 ¹ , 20 m		40071355330
LED piktogram PU/PU, for GuideLed DX/DXC 10021/10022/10023/10024 CG-S, ISO 7010 ¹ , 20 m		40071355531
LED piktogram PL/BL, for GuideLed DX/DXC 10021/10022/10023/10024 CG-S, ISO 7010 ¹ , 20 m		40071355532
LED piktogram PR/BL, for GuideLed DX/DXC 10021/10022/10023/10024 CG-S, ISO 7010 ¹ , 20 m		40071355533
LED piktogram PU/BL, for GuideLed DX/DXC 10021/10022/10023/10024 CG-S, ISO 7010 ¹ , 20 m		40071355534
LED piktogram PL/PR-R**, for GuideLed DX/DXC 10021/10022/10023/10024 CG-S, ISO 7010 ¹ , 20 m		40071355535
LED piktogram PL/PR-W**, for GuideLed DX/DXC 10021/10022/10023/10024 CG-S, ISO 7010 ¹ , 20 m		40071355536

¹ with additional option: red X

** R = Arrow from mounting wall
W = Arrow to mounting wall

Adaptive Evacuation – Luminaires

GuideLed DX 11021, 11022, 11023, 11024 CG-S



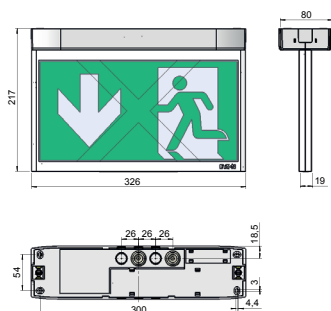
GuideLed DX 11021, 11022, 11023, 11024 CG-S

- Escape sign luminaire with LED Lightguide technology for wall-mounting
- Additional function: Displaying a red 'X' to signify an area as closed or blocked
- **DX: activation via a switching input on the supply module e.g. smoke detector or panic switch via potential free contact**
- For adaption to the respective ambient conditions, the power supply module is equipped with different selectable operating modes, e.g. static or flashing red 'X' Very good perceptibility on account of high luminance of the white contrasting colour > 500 cd/m² in keeping with standard ISO 3864-1 and high uniformity L_{min}/L_{max} > 0.8
- Reduced battery costs on account of especially low power consumption
- Minimum service requirement due to high service life of the LEDs (50,000 hours)
- Without power supply: still visible pictogramm

GuideLed DX 11021 CG-S



Dimensions in mm

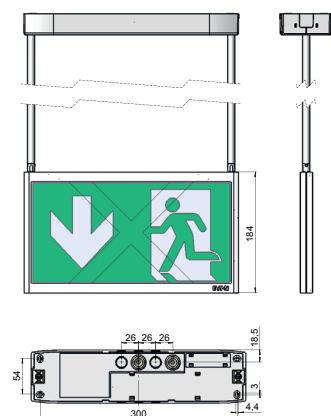


Viewing distance	30 m
Luminous Φ_E/Φ_N at the end of rated operating time (EBLF)	100 %
Housing material	PC, PMMA
Housing colour	Light grey RAL 7035
Weight	0.99 kg (11021 LED CG-S) 1.08 kg (11022 LED CG-S) 1.26 kg (11023 LED CG-S) 1.38 kg (11024 LED CG-S)
Type of mounting	Ceiling, suspended, recessed installation
Connection terminal	Mains 3 x 2 x 2.5 mm ² Switch input 2 x 2 x 1.5 mm ²
Connection voltage	220 - 240 V AC, 50/60 Hz 176 V - 275 V DC
Current consumption - battery operation (220 V)	one-sided 12 mA two-sided 17 mA
Power consumption mains operation (apparent power / effective power)	one-sided 5.9 VA / 3.1 W two-sided 7.6 VA / 4.3 W
Inrush current	1.5 A
Permissible ambient temperature	-20 °C to +40 °C
Light source	LED batten

GuideLed DX 11022 / 11023 CG-S



Dimensions in mm



Ordering details - fastening set

Scope of supply (LED pictograms must ordered separate)	Order No.
Ceiling installation set for GuideLed DX 11021 CG-S with canopy incl. LED supply with additional switching input and CG-S technology (20 addresses)	40071355484
Ceiling installation set for GuideLed DX 11022 CG-S with canopy and tube suspension 0.5 m incl. LED supply with additional switching input and CG-S technology (20 addresses)	40071355485
Ceiling installation set for GuideLed DX 11023 CG-S with canopy and tube suspension 1.5 m incl. LED supply with additional switching input and CG-S technology (20 addresses)	40071355486
Ceiling installation set for GuideLed DX 11024 CG-S incl. recessed installation housing incl. LED supply with additional switching input and CG-S technology (20 addresses)	40071355487

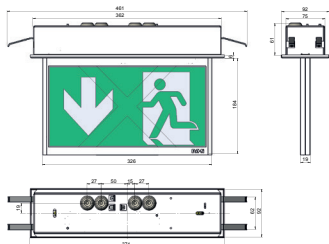
Adaptive Evacuation – Luminaires

GuideLed DX 11021, 11022, 11023, 11024 CG-S

GuideLed DX 11024 CG-S



Dimensions in mm



Ordering details - LED pictograms (fastening set required)

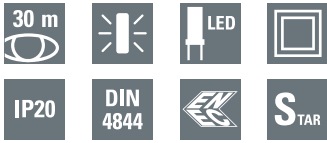
Scope of supply		Order No.
LED piktogram PL/PR, for GuideLed DX/DXC 11021/11022/11023/11024 CG-S, ISO 7010 ¹ , 30 m		40071355540
LED piktogram PU/PU, for GuideLed DX/DXC 11021/11022/11023/11024 CG-S, ISO 7010 ¹ , 30 m		40071355541
LED piktogram PL/BL, for GuideLed DX/DXC 11021/11022/11023/11024 CG-S, ISO 7010 ¹ , 30 m		40071355542
LED piktogram PR/BL, for GuideLed DX/DXC 11021/11022/11023/11024 CG-S, ISO 7010 ¹ , 30 m		40071355543
LED piktogram PU/BL, for GuideLed DX/DXC 11021/11022/11023/11024 CG-S, ISO 7010 ¹ , 30 m		40071355544
LED piktogram PL/PR-R**, for GuideLed DX/DXC 11021/11022/11023/11024 CG-S, ISO 7010 ¹ , 30 m		40071355545
LED piktogram PL/PR-W**, for GuideLed DX/DXC 11021/11022/11023/11024 CG-S, ISO 7010 ¹ , 30 m		40071355546

¹ with additional option: red X

** R = Arrow from mounting wall
W = Arrow to mounting wall

Adaptive Evacuation – Luminaires

GuideLed DXC 11021, 11022, 11023, 11024 CG-S



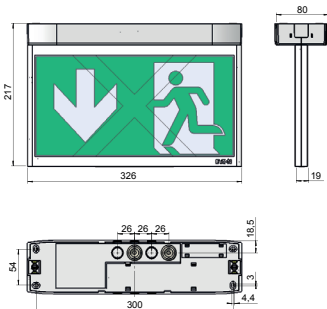
GuideLed DXC 11021, 11022, 11023, 11024 CG-S

- Escape sign luminaire with LED Lightguide technology for wall-mounting
- Additional function: Displaying a red 'X' to signify an area as closed or blocked
- **DXC: for connection to the adaptive evacuation system EATON AE-CU via an integrated bus module**
- For adaption to the respective ambient conditions, the power supply module is equipped with different selectable operating modes, e.g. static or flashing red 'X'
- Very good perceptibility on account of high luminance of the white contrasting colour > 500 cd/m² in keeping with standard ISO 3864-1 and high uniformity L_{min}/L_{max} > 0.8
- Reduced battery costs on account of especially low power consumption
- Minimum service requirement due to high service life of the LEDs (50,000 hours)
- Without power supply: still visible pictogramm

GuideLed DXC 11021 CG-S



Dimensions in mm

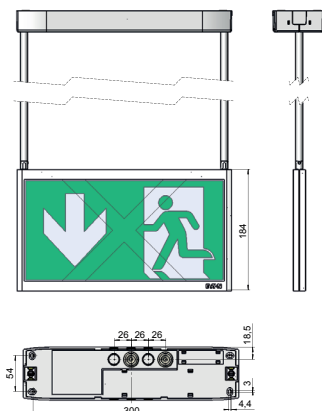


Viewing distance	30 m
Luminous Φ_E/Φ_N at the end of rated operating time (EBLF)	100 %
Housing material	PC, PMMA
Housing colour	Light grey RAL 7035
Weight	0.99 kg (11021 LED CG-S) 1.08 kg (11022 LED CG-S) 1.26 kg (11023 LED CG-S) 1.38 kg (11024 LED CG-S)
Type of mounting	Ceiling, suspended, recessed installation
Connection terminal	Mains 3 x 2 x 2.5 mm ² Switch input 2 x 2 x 1.5 mm ²
Connection voltage	220 - 240 V AC, 50/60 Hz 176 V - 275 V DC
Current consumption - battery operation (220 V)	one-sided 12 mA two-sided 17 mA
Power consumption mains operation (apparent power / effective power)	one-sided 5.9 VA / 3.1 W two-sided 7.6 VA / 4.3 W
Inrush current	1.5 A
Permissible ambient temperature	-20 °C to +40 °C
Light source	LED batten

GuideLed DXC 11022 / 11023 CG-S



Dimensions in mm



Ordering details - fastening set

Scope of supply (LED pictograms must ordered separate)	Order No.
Ceiling installation set for GuideLed DXC 11021 CG-S with canopy incl. LED supply and CG-S technology (20 addresses), with integrated bus interface for connection to an AE-CU	40071355492
Ceiling installation set for GuideLed DXC 11022 CG-S with canopy and tube suspension 0.5 m incl. LED supply and CG-S technology (20 addresses), with integrated bus interface for connection to an AE-CU	40071355493
Ceiling installation set for GuideLed DXC 11023 CG-S with canopy and tube suspension 1.5 m incl. LED supply and CG-S technology (20 addresses), with integrated bus interface for connection to an AE-CU	40071355494
Ceiling installation set for GuideLed DXC 11024 CG-S incl. recessed installation housing incl. LED supply and CG-S technology (20 addresses) with integrated bus interface for connection to an AE-CU	40071355495

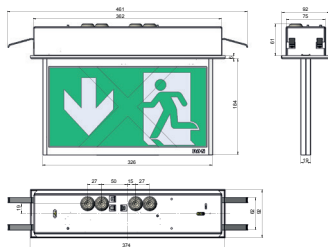
Adaptive Evacuation – Luminaires

GuideLed DXC 11021, 11022, 11023, 11024 CG-S

GuideLed DXC 11024 CG-S



Dimensions in mm



Ordering details - LED pictograms (fastening set required)

Scope of supply	Order No.
LED piktogram PL/PR, for GuideLed DX/DXC 11021/11022/11023/11024 CG-S, ISO 7010 ¹ , 30 m	40071355540
LED piktogram PU/PU, for GuideLed DX/DXC 11021/11022/11023/11024 CG-S, ISO 7010 ¹ , 30 m	40071355541
LED piktogram PL/BL, for GuideLed DX/DXC 11021/11022/11023/11024 CG-S, ISO 7010 ¹ , 30 m	40071355542
LED piktogram PR/BL, for GuideLed DX/DXC 11021/11022/11023/11024 CG-S, ISO 7010 ¹ , 30 m	40071355543
LED piktogram PU/BL, for GuideLed DX/DXC 11021/11022/11023/11024 CG-S, ISO 7010 ¹ , 30 m	40071355544
LED piktogram PL/PR-R**, for GuideLed DX/DXC 11021/11022/11023/11024 CG-S, ISO 7010 ¹ , 30 m	40071355545
LED piktogram PL/PR-W**, for GuideLed DX/DXC 11021/11022/11023/11024 CG-S, ISO 7010 ¹ , 30 m	40071355546

¹ with additional option: red X

** R = Arrow from mounting wall
W = Arrow to mounting wall

Adaptive Evacuation – Luminaires

GuideLed DX/DXC 1002x CG-S

GuideLed DX/DXC 1002x CG-S



GuideLed DX/DXC 1002x CG-S

Double-sided exit sign luminaire in LED technology for ceiling mounting (10021 CG-S), suspended mounting 0.5m (10022 CG-S), suspended mounting 1.5m (10023 CG-S) or recessed ceiling mounting (10024 CG-S). In line with EN 60598-1, EN 60598-2-22, DIN 4844-1 and DIN EN 1838 with additional function for displaying a red 'X' to signify an area as closed or blocked.

Particularly uniform and bright illumination of the pictogram by adjusted LED optics. Luminance of the white contrasting colour: $L_m \geq 500 \text{ cd/m}^2$ in line with DIN 4844-1. Uniformity $L_{min} / L_{max} > 0.8$. Light source: Highly efficient, white high-power LED strip with a service life of up to 50,000 h on account of optimised LED operating conditions. Additional specially designed light guide to display the red „X“.

Increased safety ensured by use of high life time LEDs and optimized LED operating conditions. With high light efficiency $> 110 \text{ lm/W}$ for reduced connected load.

Special LED converter with integrated monitoring module for single luminaire monitoring with 20-digit address switches (CEWA GUARD technology) and additional switching input for connection to a local signal source, e.g. a smoke detector with potential-free contact (variant DX) or integrated bus interface for direct connection to the adaptive evacuation system EATON AE-CU via a data line (variant DXC).

Mixed operation of the connection systems (maintained light, non-maintained light and switched maintained light within a circuit without additional data or actuating cables to the luminaires is possible in combination with suitable group or central battery systems with STAR technology

For adaptation to the respective environmental conditions, e.g. in complex environments with

different signs and signals, different operating modes can be selected for the additional function on the supply module- e.g. static or flashing red „X“. The escape sign is dimmed to improve recognition of the blocking function. A special operating mode „red X in normal operation“ allows escape routes to be released only in special hazardous situations.

The entire pictogram remains visible even if the entire power supply fails.

Viewing distance: 20 m

Luminous flux at the end of the rated service time (EBLF): 100%

Housing material: PC, PMMA

Housing colour: Light grey RAL 7035

Connection terminal: Mains 3 x 2 x 2.5 mm²

Switch input / Bus interface 2 x 2 x 1.5 mm²

Supply voltage: 220- 240 V AC, 50/60 Hz // 176- 275 V DC

Power Consumption incl. LED supply, (apparent power / effective power): 4.7 VA / 2.2 W (single-sided) 6.0 VA / 3.1 W (double-sided)

Current consumption- battery operation (220V): 7 mA (single-sided) 12 mA (double-sided)

Protection class: 2

Protection type: IP20

Permissible ambient temperature: -20°C to +40°C

Light source: LED strip

Dimensions LED pictogram (mm): L = 226, H = 134, W = 19

Dimensions ceiling mounting set (mm): L = 227, H = 33, W = 80

Dimensions recessed mounting set (mm): L = 274, H = 61, W = 92

Accessories:

- pcs. LED pictogram PL/PR for GuideLed DX/DXC 10021/10022/10023/10024 CG-S, ISO 7010, 20 m

- pcs. LED pictogram PU/PU for GuideLed DX/DXC

10021/10022/10023/10024 CG-S, ISO 7010, 20 m

- pcs. LED pictogram PL/BL for GuideLed DX/DXC 10021/10022/10023/10024 CG-S, ISO 7010, 20 m

- pcs. LED pictogram PR/BL for GuideLed DX/DXC 10021/10022/10023/10024 CG-S, ISO 7010, 20 m

- pcs. LED pictogram PU/BL for GuideLed DX/DXC 10021/10022/10023/10024 CG-S, ISO 7010, 20 m

- pcs. LED pictogram PL/PR-R for GuideLed DX/DXC 10021/10022/10023/10024 CG-S, ISO 7010, 20 m

- pcs. LED pictogram PL/PR-W for GuideLed DX/DXC 10021/10022/10023/10024 CG-S, ISO 7010, 20m

Luminaire with ENEC certification mark, confirmed by independent audit body.

Type: CEAG GuideLed DX 10021 CG-S for ceiling mounting

Type: CEAG GuideLed DX 10022 CG-S for suspended mounting 0.5 m

Type: CEAG GuideLed DX 10023 CG-S for suspended mounting 1.5 m

Type: CEAG GuideLed DX 10024 CG-S for recessed ceiling mounting

Type: CEAG GuideLed DXC 10021 CG-S for ceiling mounting

Type: CEAG GuideLed DXC 10022 CG-S for suspended mounting 0.5 m

Type: CEAG GuideLed DXC 10023 CG-S for suspended mounting 1.5 m

Type: CEAG GuideLed DXC 10024 CG-S for recessed ceiling mounting

Manufacturer: Eaton

GuideLed DX/DXC 1102x CG-S



GuideLed DX/DXC 1102x CG-S

Double-sided exit sign luminaire in LED technology for ceiling mounting (11021 CG-S), suspended mounting 0.5m (11022 CG-S), suspended mounting 1.5m (11023 CG-S) or recessed ceiling mounting (11024 CG-S). In line with EN 60598-1, EN 60598-2-22, DIN 4844-1 and DIN EN 1838 with additional function for displaying a red 'X' to signify an area as closed or blocked.

Particularly uniform and bright illumination of the pictogram by adjusted LED optics. Luminance of the white contrasting colour: $L_m \geq 500 \text{ cd/m}^2$ in line with DIN 4844-1. Uniformity $L_{min} / L_{max} > 0.8$.

Light source: Highly efficient, white high-power LED strip with a service life of up to 50,000 h on account of optimised LED operating conditions. Additional specially designed light guide to display the red „X“.

Increased safety ensured by use of high life time LEDs and optimized LED operating conditions. With high light efficiency $> 110 \text{ lm/W}$ for reduced connected load.

Special LED converter with integrated monitoring module for single luminaire monitoring with 20-digit address switches (CEWA GUARD technology) and additional switching input for connection to a local signal source, e.g. a smoke detector with potential-free contact (variant DX) or integrated bus interface for direct connection to the adaptive evacuation system EATON AE-CU via a data line (variant DXC).

Mixed operation of the connection systems (maintained light, non-maintained light and switched maintained light within a circuit without additional data or actuating cables to the luminaires is possible in combination with suitable group or central battery systems with STAR technology

For adaptation to the respective environmental conditions, e.g. in complex environments with different signs and signals, different operating modes can be selected for the additional function on the supply module- e.g. static or flashing red „X“. The escape sign is dimmed to improve recognition of the blocking function. A special operating mode „red X in normal operation“ allows escape routes to be released only in special hazardous situations.

The entire pictogram remains visible even if the entire power supply fails.

Viewing distance: 30 m

Luminous flux at the end

of the rated service time (EBLF): 100%

Housing material: PC, PMMA

Housing colour: Light grey RAL 7035

Connection terminal: Mains 3 x 2 x 2.5 mm²

Switch input / Bus interface 2 x 2 x 1.5 mm²

Supply voltage: 220- 240 V AC, 50/60 Hz // 176- 275 V DC

Power Consumption incl. LED supply (apparent power / effective power): 5.9 VA / 3.1 W (single-sided) 7.6 VA / 4.3 W (double-sided)

Current consumption- battery operation (220V): 12 mA (single-sided) 17 mA (double-sided)

Protection class: 2

Protection type: IP20

Permissible ambient temperature: -20°C to +40°C

Light source: LED strip

Dimensions LED pictogram (mm): L = 326, H = 184, W = 19

Dimensions incl. ceiling mounting set (mm): L = 327, H = 33, W = 80

Dimensions recessed mounting set (mm): L = 374, H = 61, W = 92

Accessories:

- pcs. LED pictogram PL/PR for GuideLed DX/DXC

11021/11022/11023/11024 CG-S, ISO 7010, 30 m

- pcs. LED pictogram PU/PU for GuideLed DX/DXC 11021/11022/11023/11024 CG-S, ISO 7010, 30 m

- pcs. LED pictogram PL/BL for GuideLed DX/DXC 11021/11022/11023/11024 CG-S, ISO 7010, 30 m

- pcs. LED pictogram PR/BL for GuideLed DX/DXC 11021/11022/11023/11024 CG-S, ISO 7010, 30 m

- pcs. LED pictogram PU/BL for GuideLed DX/DXC 11021/11022/11023/11024 CG-S, ISO 7010, 30 m

- pcs. LED pictogram PL/PR-R for GuideLed DX/DXC 11021/11022/11023/11024 CG-S, ISO 7010, 30 m

- pcs. LED pictogram PL/PR-W for GuideLed DX/DXC 11021/11022/11023/11024 CG-S, ISO 7010, 30m

Luminaire with ENEC certification mark, confirmed by independent audit body.

Type: CEAG GuideLed DX 11021 CG-S for ceiling mounting

Type: CEAG GuideLed DX 11022 CG-S for suspended mounting 0.5 m

Type: CEAG GuideLed DX 11023 CG-S for suspended mounting 1.5 m

Type: CEAG GuideLed DX 11024 CG-S for recessed ceiling mounting

Type: CEAG GuideLed DXC 11021 CG-S for ceiling mounting

Type: CEAG GuideLed DXC 11022 CG-S for suspended mounting 0.5 m

Type: CEAG GuideLed DXC 11023 CG-S for suspended mounting 1.5 m

Type: CEAG GuideLed DXC 11024 CG-S for recessed ceiling mounting

Manufacturer: Eaton

Adaptive Evacuation – Luminaires

GuideLed DX/DXC 10011 CG-S

GuideLed DX/DXC 10011 CG-S
for parallel wall mounting



GuideLed DX/DXC 10011 CG-S for parallel wall mounting

Single-sided exit sign luminaire in LED technology for wall mounting. In line with EN 60598-1, EN 60598-2-22, DIN 4844-1 and DIN EN 1838 with additional function for displaying a red 'X' to signify an area as closed or blocked.

Slender design with low mounting height of only 44 mm including pictogram and mounting set. Installation of the LED pictogram without tools on the surface mounting set.

Particularly uniform and bright illumination of the pictogram by adjusted LED optics. Luminance of the white contrasting colour: $L_m \geq 500 \text{ cd/m}^2$ in line with DIN 4844-1. Uniformity $L_{min} / L_{max} > 0.8$. Light source: Highly efficient, white high-power LED strip with a service life of up to 50,000 h on account of optimised LED operating conditions. Additional specially designed light guide to display the red „X“.

Increased safety ensured by use of high life time LEDs and optimized LED operating conditions. With high light efficiency $> 110 \text{ lm/W}$ for reduced connected load.

Special LED converter with integrated monitoring module for single luminaire monitoring with 20-digit address switches (CEWA GUARD technology) and additional switching input for connection to a local signal source, e.g. a smoke detector with potential-free contact (variant DX) or integrated bus interface for direct connection to the adaptive evacuation system EA-

TON AE-CU via a data line (variant DXC).

Mixed operation of the connection systems (maintained light, non-maintained light and switched maintained light within a circuit without additional data or actuating cables to the luminaires is possible in combination with suitable group or central battery systems with STAR technology.

For adaptation to the respective environmental conditions, e.g. in complex environments with different signs and signals, different operating modes can be selected for the additional function on the supply module- e.g. static or flashing red „X“. The escape sign is dimmed to improve recognition of the blocking function. A special operating mode „red X in normal operation“ allows escape routes to be released only in special hazardous situations.

The entire pictogram remains visible even if the entire power supply fails.

Viewing distance: 20 m

Luminous flux at the end of the rated service time: 100%

Housing material: PC, PMMA

Housing colour: light grey RAL 7035

Connection terminal: Mains $3 \times 2 \times 2.5 \text{ mm}^2$

Switch input / Bus interface $2 \times 2 \times 1.5 \text{ mm}^2$

Supply voltage: 220- 240 VAC, 50 Hz / 176- 275 VDC

Power consumption incl. LED supply

(Apparent power/effective power): 4,7 VA / 2,2 W

Current consumption- battery operation: 7 mA

Protection Class: 2

Degree of protection: IP 20

Permissible ambient temperature: $-20^\circ \text{ Celsius}$ to $+40^\circ \text{ Celsius}$

Light source: LED-strip

Dimensions LED-pictogram: L = 226, H = 134, W = 17

Dimensions including wall mounting set: L = 226, H = 134, W = 44

Accessories:

- pcs. LED pictogram PL for GuideLed DX/DXC 10011 CG-S, ISO 7010, 20 m

- pcs. LED pictogram PR for GuideLed DX/DXC 10011 CG-S, ISO 7010, 20 m

- pcs. LED pictogram PU for GuideLed DX/DXC 10011 CG-S, ISO 7010, 20 m

- pcs. LED pictogram PO for GuideLed DX/DXC 10011 CG-S, ISO 7010, 20 m

Luminaire with ENEC test mark, certified by an independent test centre.

Type: CEAG GuideLed DX 10011 CG-S for parallel wall mounting

Type: CEAG GuideLed DXC 10011 CG-S for parallel wall mounting

Manufacturer: EATON

GuideLed DX/DXC 11011 CG-S
for parallel wall mounting



GuideLed DX/DXC 11011 CG-S for parallel wall mounting

Single-sided exit sign luminaire in LED technology for wall mounting. In line with EN 60598-1, EN 60598-2-22, DIN 4844-1 and DIN EN 1838 with additional function for displaying a red 'X' to signify an area as closed or blocked.

Slender design with low mounting height of only 44 mm including pictogram and mounting set. Installation of the LED pictogram without tools on the surface mounting set.

Particularly uniform and bright illumination of the pictogram by adjusted LED optics. Luminance of the white contrasting colour: $L_m \geq 500 \text{ cd/m}^2$ in line with DIN 4844-1. Uniformity $L_{min} / L_{max} > 0.8$. Light source: Highly efficient, white high-power LED strip with a service life of up to 50,000 h on account of optimised LED operating conditions. Additional specially designed light guide to display the red „X“.

Increased safety ensured by use of high life time LEDs and optimized LED operating conditions. With high light efficiency $> 110 \text{ lm/W}$ for reduced connected load.

Special LED converter with integrated monitoring module for single luminaire monitoring with 20-digit address switches (CEWA GUARD technology) and additional switching input for connection to a local signal source, e.g. a smoke detector with potential-free contact (variant DX) or integrated bus interface for direct connection to the adaptive evacuation system EA-

TON AE-CU via a data line (variant DXC).

Mixed operation of the connection systems (maintained light, non-maintained light and switched maintained light within a circuit without additional data or actuating cables to the luminaires is possible in combination with suitable group or central battery systems with STAR technology.

For adaptation to the respective environmental conditions, e.g. in complex environments with different signs and signals, different operating modes can be selected for the additional function on the supply module- e.g. static or flashing red „X“: The escape sign is dimmed to improve recognition of the blocking function. A special operating mode „red X in normal operation“ allows escape routes to be released only in special hazardous situations.

The entire pictogram remains visible even if the entire power supply fails.

Viewing distance: 30 m

Luminous flux at the end of the rated service time: 100%

Housing material: PC, PMMA

Housing colour: light grey RAL 7035

Connection terminal: Mains 3 x 2 x 2.5 mm²

Switch input / Bus interface 2 x 2 x 1.5 mm²

Supply voltage: 220- 240 VAC, 50 Hz / 176- 275 VDC

Power consumption incl. LED supply (Apparent power/effective power): 5,9 VA / 3,1 W

Current consumption- battery operation: 12 mA

Protection Class: 2

Degree of protection: IP 20

Permissible ambient temperature: -20° Celsius to +40° Celsius

Light source: LED-strip

Dimensions LED-pictogramm: L = 326, H = 184, W = 17

Dimensions including wall mounting set: L = 326, H = 184, W = 44

Accessories:

- pcs. LED pictogram PL for GuideLed DX/DXC 11011 CG-S, ISO 7010, 30 m

- pcs. LED pictogram PR for GuideLed DX/DXC 11011 CG-S, ISO 7010, 30 m

- pcs. LED pictogram PU for GuideLed DX/DXC 11011 CG-S, ISO 7010, 30 m

- pcs. LED pictogram PO for GuideLed DX/DXC 11011 CG-S, ISO 7010, 30 m

Luminaire with ENEC test mark, certified by an independent test centre.

Type: CEAG GuideLed DX 11011 CG-S for parallel wall mounting

Type: CEAG GuideLed DXC 11011 CG-S for parallel wall mounting

Manufacturer: EATON

Eaton

EMEA Headquarters
Route de la Longeraie 7
1110 Morges, Switzerland
www.eaton.eu

CEAG Notlichtsysteme GmbH
Senator-Schwartz-Ring 26
59494 Soest, Germany
Tel.: +49 (0) 2921 69-870
Fax: +49 (0) 2921 69-617
E-Mail: info-n@ceag.de
Web: www.ceag.de

© 2022 Eaton
All Rights Reserved
Printed in Germany
Publication No. BR451009EN
Article No. 40071860322

Changes to the products, to the information contained in this document, and to prices are reserved; so are errors and omissions. Only order confirmations and technical documentation by Eaton is binding. Photos and pictures also do not warrant a specific layout or functionality. Their use in whatever form is subject to prior approval by Eaton. The same applies to Trademarks (especially Eaton, Moeller, and Cutler-Hammer). The Terms and Conditions of Eaton apply, as referenced on Eaton Internet pages and Eaton order confirmations.

Eaton is a registered trademark.

All other trademarks are property of their respective owners.