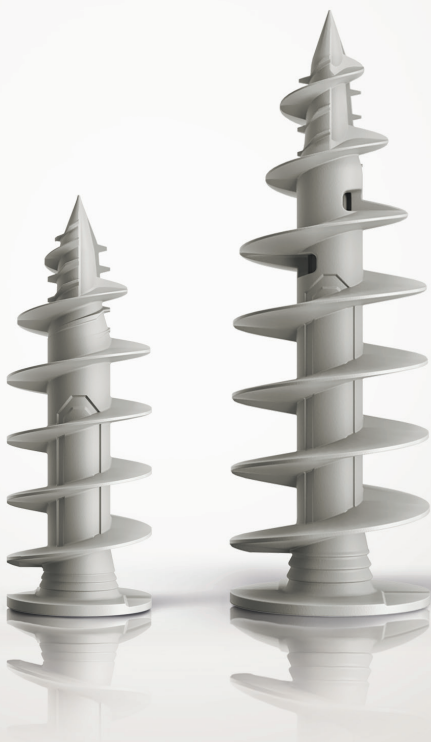


fischer 

FID II and FID II Plus.
Insulation anchors for
thermal bridge-free
fixing on ETICS.



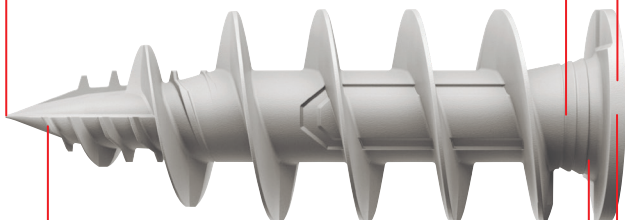
FID II and FID II Plus

Insulation anchor for medium-heavy fixing on the ETICS.

Centering tip for **precise positioning** of the fastener.

Minimal head diameter for a **hidden fixing** even with the smallest attachment parts.

Possible screw diameters 3.5 - 4.5 mm for a **flexible use of all common accessory screws.**



Optimal drill tip for a **clean setting pattern without pre-drilling** up to 10 mm plaster thickness.

The underhead-milling-pockets ensure a **perfectly surface-flush setting pattern on the plaster surface.**

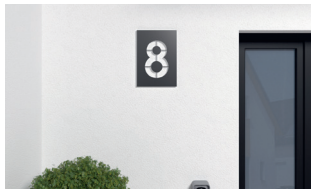
TX40-bit holder for a **powerful drive.**

Functioning and Applications

Suitable for ETICS with mineral wool, wood fibre boards and EPS.



FID II

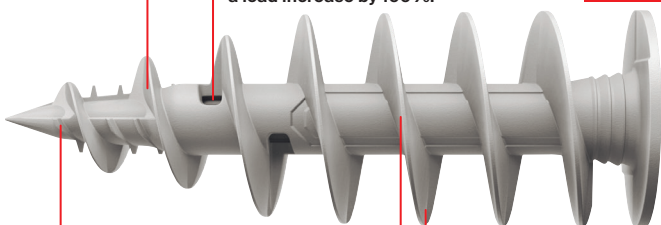


House number

s.
r
gs

Glass-fiber reinforced plastic for **maximum stability in ETICS** with compression-resistant insulation materials such as wood fiber.

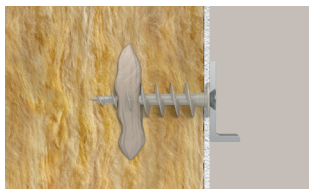
The use of chemical components through the outlet openings **provides a load increase by 100%**.



Possible screw diameters
4.5 - 6 mm for a **flexible use of all common accessory screws.**

Distinctive thread flanks for **high load bearing in the ETICS.**

Combined milling and cutting function of the tip enables **easy setting with minimum effort.**



FID II Plus with chemical component



Parcel box

Dealer:

www.fischer-international.com



fischer stands for

Fixing Systems
Automotive
fischertechnik
Consulting
Electronic Solutions

fischerwerke GmbH & Co. KG
Klaus-Fischer-Straße 1 · 72178 Waldachtal
Germany
T +49 7443 12 – 0
www.fischer-international.com · info@fischer.de
