

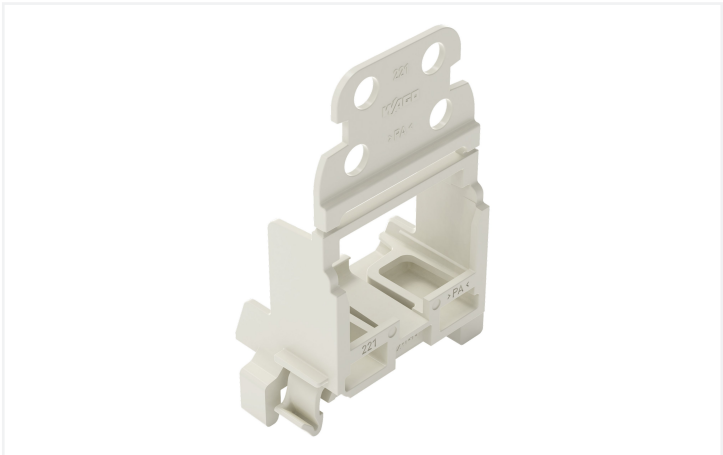


Color: ■ light gray

Similar to illustration



Similar to illustration



Similar to illustration



Similar to illustration





Physical data		
Width		43 mm / 1.693 inches
Height		64 mm / 2.52 inches
Depth		23.7 mm / 0.933 inches

Mechanical data		
Mounting type		Snapping on DIN-35 rail
Suitable		for 10-wire connectors (4 mm²)

Material data		
Note (material data)		<a href="#">Information on material specifications can be found here</a>
Color		light gray
Material group		I
Insulation material (main housing)		Polyamide (PA66)
Flammability class per UL94		V0
Fire load		0.203 MJ
Weight		6.8 g

Commercial data		
PU (SPU)		10 pcs
Packaging type		Box
Country of origin		CN
GTIN		4066966603934
Customs tariff number		39269097900

Environmental Product Compliance		
RoHS Compliance Status		Compliant, No Exemption

## 1 Compatible Products

### 1.1 Optional Accessories

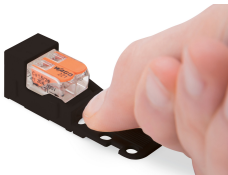
#### 1.1.1 Marking

##### 1.1.1.1 Marking strip



**Item No.: 210-833**  
Marking strips; 25 m on roll; 6 mm wide;  
plain; Self-adhesive; white

Installation Notes



Inserting a connector into the mounting carrier.

Removing a connector from the mounting carrier.

Conductor termination



Inserting a conductor.



Horizontal screw mounting



Vertical screw mounting



Horizontal mounting via snap-in foot



Vertical mounting via snap-in foot

Strain relief

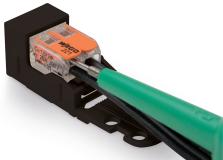


Use a cable tie to secure the conductors to the strain relief plate.



The strain relief plate can be removed.

Testing



Testing a connector mounted on the carrier via test slot.

## Application



Connecting a light to the mains.

## Marking



Labeling the mounting carrier.