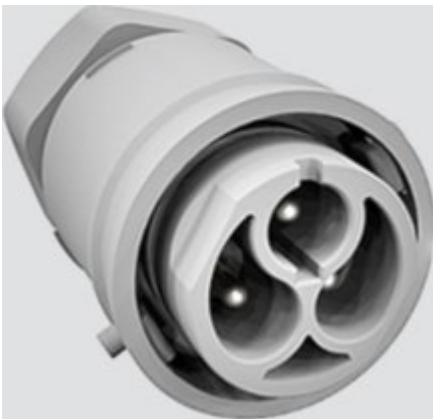


WEATHERPROOF LED G3 10 PIECE MULTI-PACK SPARE QC3 FEM

Item No: 0048880



10 piece multi-pack female quick connector accessory for Sylproof Superia LED G3, Hydroproof LED G3, START Waterproof LED G3 and Resisto weatherproof luminaires.

Technical Assets

Photometrics

General data

Product name	WEATHERPROOF LED G3 10 PIECE MULTI-PACK SPARE QC3 FEM
Technology	Accessory
General application	Logistics & Industry
Operating temperature range (°C)	-10°C...+40°C
ETIM Class	EC002557
Warranty	5 years

Electrical data

Current (A)	16
Primary Supply/Product voltage - min (V)	220
Primary Supply/Product voltage - max (V)	240

Physical data

IP rating	IP68
Nominal Product Length (mm)	62
Nominal Product Width (mm)	27
Nominal Product Height (mm)	33.5
Weight (kg)	0.028

Packaging

Product EAN number	5410288488806
Packaging single length / height (cm)	22.0
Packaging single width (cm)	15.0
Packaging single depth (cm)	4.0
DUN14 (inner)	05410288488806
Units per outer package	1
Packaging outer length / height (cm)	22.0
Packaging outer width (cm)	15.0
Packaging outer depth (cm)	4.0

Safety data

Optimal operating condition (°C)	-10-40
----------------------------------	--------