



Features

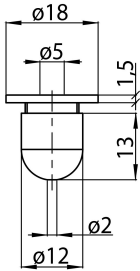
- OneTrack accessory, round head ceiling attachment, in chrome plated brass.

Product Overview

Product name	ONETRACK ROUND CEILING ATTACHMENT ALU S-9000/216
Technology	Accessory
General application	Museums & Galleries, Office
ETIM Class	EC000101
Housing colour	Silver
Warranty	5 years

ONETRACK ROUND CEILING ATTACHMENT ALU S-9000/216 9200819

Technical drawings



Data table

GENERAL DATA

Product name	ONETRACK ROUND CEILING ATTACHMENT ALU S-9000/216
Technology	Accessory
General application	Museums & Galleries, Office
ETIM Class	EC000101
Warranty	5 years

ELECTRICAL DATA

Control gear required	No
-----------------------	----

ONETRACK ROUND CEILING ATTACHMENT ALU S-9000/216 9200819

PHYSICAL DATA

Housing colour	Silver
Nominal Product Height (mm)	14.5
Nominal Product Diameter (mm)	18
Weight (kg)	0.014

PACKAGING

Single packaging type	Plastic
Packaging single length / height (cm)	3.0
Packaging single width (cm)	3.0
Packaging single depth (cm)	3.0
Units per outer package	1
Packaging outer length / height (cm)	3.0
Packaging outer width (cm)	3.0
Packaging outer depth (cm)	3.0

SAFETY DATA

Special purpose lamp	No
Dry applications use only	No
Suitable for household illumination	No