

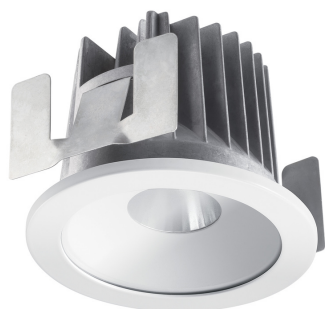
Concord

MYRIAD DECO IP65 SPOT 3000K PHDM WHITE WBEZ
2058860



Features

- MYRD IP ST 3K PHDM WHT WBEZ



Product Overview

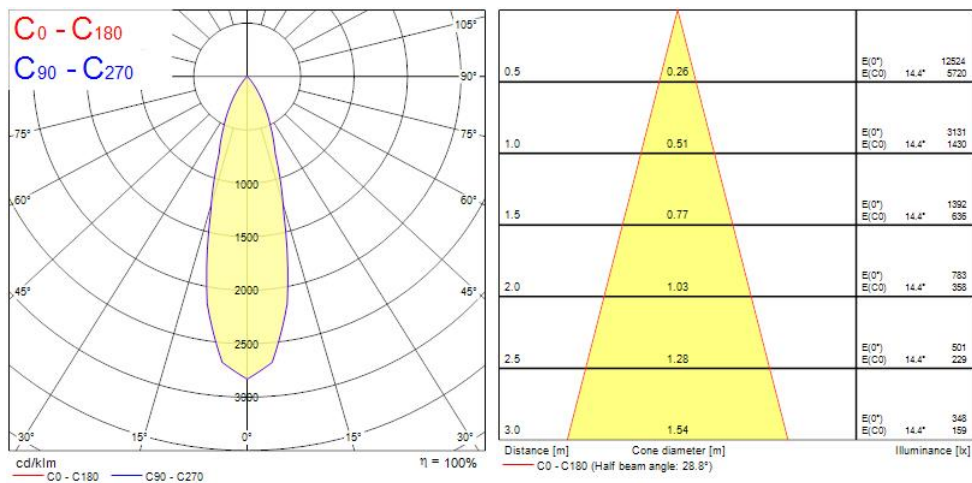
| | |
|-----------------------------------|---|
| Product name | MYRIAD DECO IP65 SPOT 3000K PHDM WHITE WBEZ |
| Technology | LED |
| Cap/Base | N/A |
| Housing | Aluminium |
| Mount | Ceiling recessed mounting |
| Environment | Interior |
| General application | Hospitality, Office, Residential & Consumer, Retail |
| ETIM Class | EC001744 |
| Fixture luminous flux (lm) | 1106 |
| Luminaire efficacy (lm/W) | 111 |
| LOR (%) | 100 |
| Correlated colour temperature (k) | 3000 |
| Light colour | Warm White |
| CRI (Ra) | 90 |
| Colour Variation Initial (SDCM) | 3 |
| Beam Angle (°) | 28 |
| Photobiological Risk Group | RG1 |
| Total power consumption (W) | 10 |
| Electrical protection | Class II |
| Control gear type | Electronic ballast |

Concord

MYRIAD DECO IP65 SPOT 3000K PHDM WHITE WBEZ 2058860

| | |
|---------------------------|---------------|
| Minimum dimming level (%) | 10 |
| Housing colour | White |
| IP rating | IP65/20 |
| IK rating | IK02 |
| Product EAN number | 5025768588602 |
| Warranty | 5 years |
| Dimming method | Other |

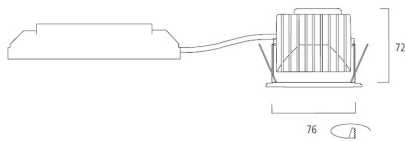
Photometry



Concord

MYRIAD DECO IP65 SPOT 3000K PHDM WHITE WBEZ 2058860

Technical drawings



Dimensions (mm)

Data table

GENERAL DATA

| | |
|--|---|
| Product name | MYRIAD DECO IP65 SPOT 3000K PHDM WHITE WBEZ |
| Technology | LED |
| Cap/Base | N/A |
| Housing | Aluminium |
| Mount | Ceiling recessed mounting |
| Environment | Interior |
| General application | Hospitality, Office, Residential & Consumer, Retail |
| Performance ambient temperature Tq (°C) | 25 |
| ETIM Class | EC001744 |
| Warranty | 5 years |

OPTICAL DATA

| | |
|-----------------------------------|------|
| Fixture luminous flux (lm) | 1106 |
| Luminaire efficacy (lm/W) | 111 |

Concord

MYRIAD DECO IP65 SPOT 3000K PHDM WHITE WBEZ 2058860

| | |
|-----------------------------------|------------|
| LOR (%) | 100 |
| Correlated colour temperature (k) | 3000 |
| Light colour | Warm White |
| CRI (Ra) | 90 |
| Colour Variation Initial (SDCM) | 3 |
| Adjustable chromaticity | N |
| Beam Angle (°) | 28 |
| Photobiological Risk Group | RG1 |

ELECTRICAL DATA

| | |
|--|--------------------|
| Total power consumption (W) | 10 |
| Primary Supply/Product voltage - min (V) | 230 |
| Primary Supply/Product voltage - max (V) | 240 |
| Electrical protection | Class II |
| Control gear required | No |
| Control gear type | Electronic ballast |
| Dimming method | Other |
| Minimum dimming level (%) | 10 |
| Drive current (mA) | 250 |
| Energy Efficiency Class (A->G) of contained light source | E |
| Nominal Frequency (Hz) | 50/60Hz |

LIFETIME DATA

| | |
|------------------|--------|
| Lifespan L70 B50 | 100000 |
| Lifespan L80 B20 | 100000 |
| Lifespan L90 B10 | 68500 |

PHYSICAL DATA

| | |
|-----------------------------|-----------------|
| Housing colour | White |
| IP rating | IP65/20 |
| IK rating | IK02 |
| Diffuser finish | Bezel (or Ring) |
| Nominal Product Height (mm) | 72 |

Concord

MYRIAD DECO IP65 SPOT 3000K PHDM WHITE WBEZ 2058860

| | |
|-------------------------------|------|
| Nominal Product Diameter (mm) | 90 |
| Weight (kg) | 0.44 |
| Recessed Depth (mm) | 72 |

PACKAGING

| | |
|---------------------------------------|----------------|
| Product EAN number | 5025768588602 |
| Packaging single length / height (cm) | 17.5 |
| Packaging single width (cm) | 15.0 |
| Packaging single depth (cm) | 17.5 |
| DUN14 (inner) | 05025768588602 |
| Units per outer package | 1 |
| Packaging outer length / height (cm) | 17.5 |
| Packaging outer width (cm) | 15.0 |
| Packaging outer depth (cm) | 17.5 |

SAFETY DATA

| | |
|-------------------------------------|----|
| Special purpose lamp | No |
| Dry applications use only | No |
| Suitable for household illumination | No |