

ONETRACK M13 S SUSPENSION BRACKET S-9000/312-M13-W 9200808



Features

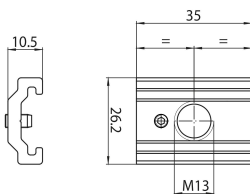
- OneTrack accessory, short bracket with M13 gripper for suspensions, in aluminum. White.



Product Overview

| | |
|---------------------|---|
| Product name | ONETRACK M13 S SUSPENSION BRACKET S-9000/312-M13-W |
| Technology | Accessory |
| General application | Museums & Galleries, Office |
| ETIM Class | EC000101 |
| Housing colour | White |
| Warranty | 5 years |

Technical drawings



Data table

GENERAL DATA

ONETRACK M13 S SUSPENSION BRACKET S-9000/312-M13-W 9200808

| | |
|----------------------------|---|
| Product name | ONETRACK M13 S SUSPENSION BRACKET S-9000/312-M13-W |
| Technology | Accessory |
| General application | Museums & Galleries, Office |
| ETIM Class | EC000101 |
| Warranty | 5 years |

ELECTRICAL DATA

| | |
|------------------------------|----|
| Control gear required | No |
|------------------------------|----|

PHYSICAL DATA

| | |
|------------------------------------|-------|
| Housing colour | White |
| Nominal Product Length (mm) | 35 |
| Nominal Product Width (mm) | 26.2 |
| Nominal Product Height (mm) | 10.5 |
| Weight (kg) | 0.02 |

PACKAGING

| | |
|--|---------|
| Single packaging type | Plastic |
| Packaging single length / height (cm) | 3.9 |
| Packaging single width (cm) | 3.0 |
| Packaging single depth (cm) | 2.53 |
| Units per outer package | 20 |
| Packaging outer length / height (cm) | 10.7 |
| Packaging outer width (cm) | 10.7 |
| Packaging outer depth (cm) | 4.0 |

SAFETY DATA

| | |
|--|----|
| Special purpose lamp | No |
| Dry applications use only | No |
| Suitable for household illumination | No |