

# REPORT

## 18 Series



**finder**<sup>®</sup>

SWITCH TO THE FUTURE

**NEW**



**Movement and  
presence detector  
with External  
push-button (On/Off)  
override facility**

**Type 18.51.8.230.0040**

Two sensing areas:  
"Presence" suitable  
for zones of low activity,  
and  
"Movement" suitable for  
transit areas or zones of high activity

### Features

- External push-button, for forcing the output state On or Off
- Dynamic light compensation
- Extensive sensing area
- 1 NO 10 A (connected to supply live)
- Supply voltage: 110...230 V AC
- Quick installation thanks to push-in terminals
- Ceiling mounting compatible with 60 mm box
- Stylish modern design



The new **18.51.8.230.0040** works as all 18 Series movement detectors in **"Automatic"** mode, but with the connection of an external push-button it can also work in **"Manual Override"** mode.

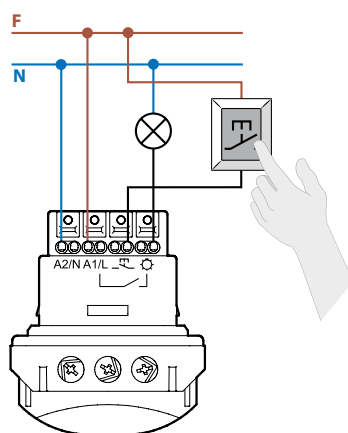
#### "Automatic" mode

Thanks to the dynamic light compensation technology, the product continuously computes the current level of natural light by taking into account the contribution made by artificial light. So, having switched the lighting On, after detecting movement at a low light level, any subsequent rise in the natural light level to above the set threshold will be detected and will immediately switch the lamps Off.

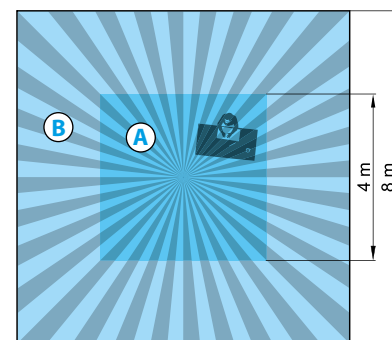
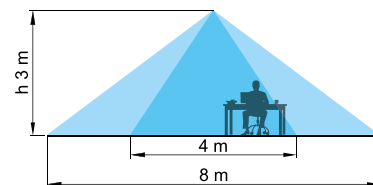
#### "Manual Override" via external push-button

While operating in the "Automatic" mode, the lamps can be forced On or Off by the external push-button. The output state set by the manual override remains active during the time delay period initiated by the last detected movement.

Operation of the push-button always inverts the current status of the output contact.



#### Sensing area



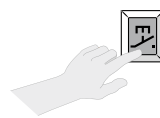
2 sensing areas (h=3 m):

- A:** presence (micromovements): (4x4) m
- B:** movement: (8x8) m

#### FORCING OFF



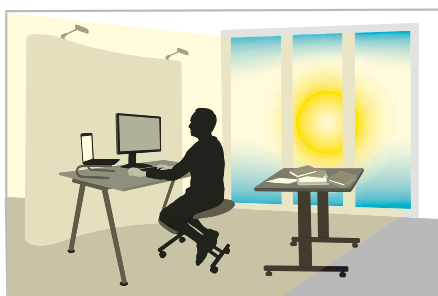
With the push-button you can force the lamps Off in advance of the automatic deactivation



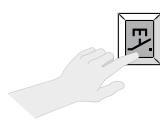
With low light and movement/presence detected the 18.51 switches the lamps On automatically.

Leaving the work place with the lamps already extinguished gives greater energy savings.

#### FORCING ON



The push-button can force the lamps On - where this is needed.



Movement/presence detected but with sufficient brightness the 18.51 keeps the lamps Off.

The working environment is illuminated both by natural and artificial light.