

Base for N.O. or N.C. push button with 4 connection terminals, 10 A, plug-in terminals, screw fixing, to be used with the Niko Rocker or Toggle design range

## 171-03015

10 A  
250 Vac

CE

4 year warranty

Mechanism for N.O. or N.C. push button with 4 connection terminals, 10 A. The base is equipped with screw fixing and plug-in terminals. The base has an installation depth of 26 mm.

The N.O. or N.C. push button is used to create an action pulse as input for teleruptors and smart home systems. A Niko Rocker or Niko Toggle and faceplate in the colour of your choice must be ordered separately.

- proven Niko quality
- unique illuminated switch design (by adding feedback LED)
- compatible with Niko Home Control on bus wiring (using the push-button interface)
- fits in a standard flush-mounting box

Wires that remain fixed:

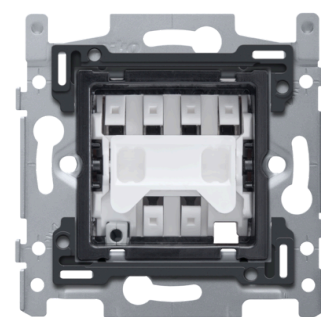
- wire is fixed firmly due to the high-quality plug-in terminal with a long life span, tested according to the norm
- since the conductor release on the mechanisms is located at the front, the wiring cannot push on the release when you place it in the flush-mounting box.

Faster and easier installation:

- all connections terminals are located at the top of the base:

Niko quality:

- long life span since the plug-in terminal stays within the limits of the norm during a temperature and power drop
- metal base is held firmly in place, even on uneven walls, doesn't break and is not subject to stress cracking (small ruptures)
- firm metal claws with a large engagement depth (31 mm) remain fixed when mounted and can be screwed tightly to ensure that the socket outlets can remain fixed in the wall for a longer time and to avoid the mechanisms should become warped



## Technical data

Base for N.O. or N.C. push button with 4 connection terminals, 10 A, plug-in terminals, screw fixing, to be used with the Niko Rocker or Toggle design range.

- Function:
  - push button
  - block-shaped silver contacts (cadmium-free) in the form of a cross
- Type of control: push button
- Number of buttons: 1
- Number of leds: 0
- Protection degree standalone: IP20
- Protection degree: IP41 for the combination of a mechanism, central plate and faceplate
- Impact resistance: the combination of a mechanism, a central plate and a faceplate has an impact-resistance of IK06
- SBL load: 100 W
- Material base insert:
  - ureumformaldehyde (UF) with high heat resistance
  - white RAL9010 (approximately)
- Flush-mounting frame type:
  - 1 mm-thick metal
  - galvanized on all sides after cutting, even on the cut edges
  - with 4 grooves with screw hole of 7 mm
  - with 4 screw holes (indicated by a screw symbol) with a diameter of 3 mm for mounting on panels
- Minimum flush-mounting depth: 26 mm
- Type of fastening:
  - with screws for simple fixing in a flush-mounting box with grip surfaces
- Centre-to-centre distance:
  - simple and quick assembly of one or more mechanisms by the indication (chalk line, laser, etc.) of the centre of the flush-mounting frame
  - vertical coupling centre-to-centre distance 60 mm by sliding several bases into each other, they lock themselves automatically
  - vertical coupling centre-to-centre distance 71 mm using pre-formed lips at the bottom, by folding the lips downwards over a length of 1 mm, the bases support each other and the centre-to-centre distance is guaranteed.
  - horizontal connection of multiple bases is quick and perfect thanks to the folded-up dovetails on the left and right sides
  - extra robustness due to the folded-up edges on the outside of the base and the continuation into the inside of the base
- Base end border: 4 rectangular openings (7 x 2.5 mm) which, if the flush-mounting box protrudes from the plasterwork, can compensate for a margin of between 1 and 1.2 mm, so that the faceplate can still butt up perfectly against the wall
- Terminal wire connection: plug-in terminals
- Terminals location: top of the base
- Terminals wire capacity: 2 x 2.5 mm<sup>2</sup>
- Suitable type of wire: rigid (solid or stranded)
- Markings on the flush-mounting frame:
  - indelibly indicated at the rear side: stripping length and wiring diagram
  - indelibly indicated at the front side: terminals and switch symbol

- Wire stripping length: 12 mm
- Recess for indication led:
  - the base is provided with 2 rectangular recesses for an optional lighting unit
  - left recess (front view): optional lighting unit with wires can be clicked in
- Minimum ambient temperature: 5 °C
- Maximum ambient temperature: 40 °C
- Dimensions (HxWxD): 71 mm x 73 mm x 30 mm
- Certification marks: CEBEC, NF
- Marking: CE

### Wiring diagram

