

ESDEC

INNOVATIVE MOUNTING SYSTEMS



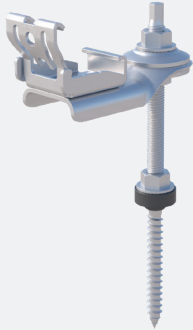
**RELIABLE
AND QUICK
INSTALLATION ON
PITCHED ROOFS**

CLICKFIT EVO

ARABIC TILES

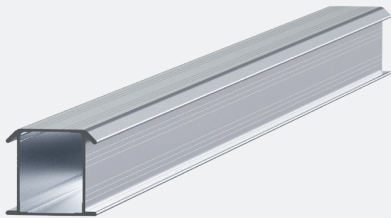
www.esdec.com

THE 4 COMPONENTS OF CLICKFIT EVO



1. CLICKFIT EVO HANGER BOLT

- Fully preassembled hanger bolt
- Height adjustable
- Compensates for roof irregularities up to 10 degrees
- Can be rotated by 360 degrees
- Self-aligning click connection: easy and quick
- Mounting rail can be installed horizontally or vertically
- For both landscape and portrait positioning of solar panels
- For new builds and existing buildings
- Available in three lengths and two thicknesses for wood purlins/trusses



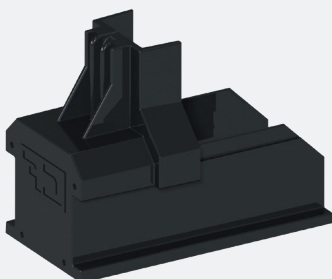
2. MOUNTING RAIL

- Quick and easy to click into the ClickFit EVO click connection on the hook
- Available in different lengths
- Rails can be coupled with a coupler



3. UNIVERSAL MODULE CLAMP

- Suitable for all framed solar panels
- Can be used as centre clamp or as end clamp in combination with end cap
- Standard assembly
- Including equipotential bonding for the solar panels
- Available in grey and black



4. END CAP

- End cap holds the module clamp in its position
- Elongated end cap to allow for aesthetically pleasing finish
- Available in grey and black



EASY INSTALLATION ON THE ROOF

ClickFit EVO Arabic tiles

ClickFit EVO Arabic tiles has been specially developed for use with the existing ClickFit EVO system on roofs with Arabic tiles. This straightforward system consists of just four components and can be installed on both existing and new roofs. The preassembled hanger bolt features the familiar ClickFit EVO click connection. The unique universal properties of this system let you install solar panels quickly and easily on pitched roofs.

The hanger bolt compensates for roof irregularities of up to 10 degrees

With the ClickFit EVO Hanger Bolt, you can quickly install solar panels on all types of Arabic tiles. The hanger bolt is provided pre-assembled and the flexible adapter allows you to easily and quickly compensate for roof irregularities of up to 10 degrees. Using the universal ClickFit EVO click connection fitted to the hanger bolt as standard, you can simply carry on working with familiar components from the ClickFit EVO product line, such as universal rails, module clamps and end caps. As well as being suitable for Arabic tiles, the hanger bolt can also be used on corrugated, steel, EPDM and bitumen roofs.

Mounting on an Arabic tiled roof

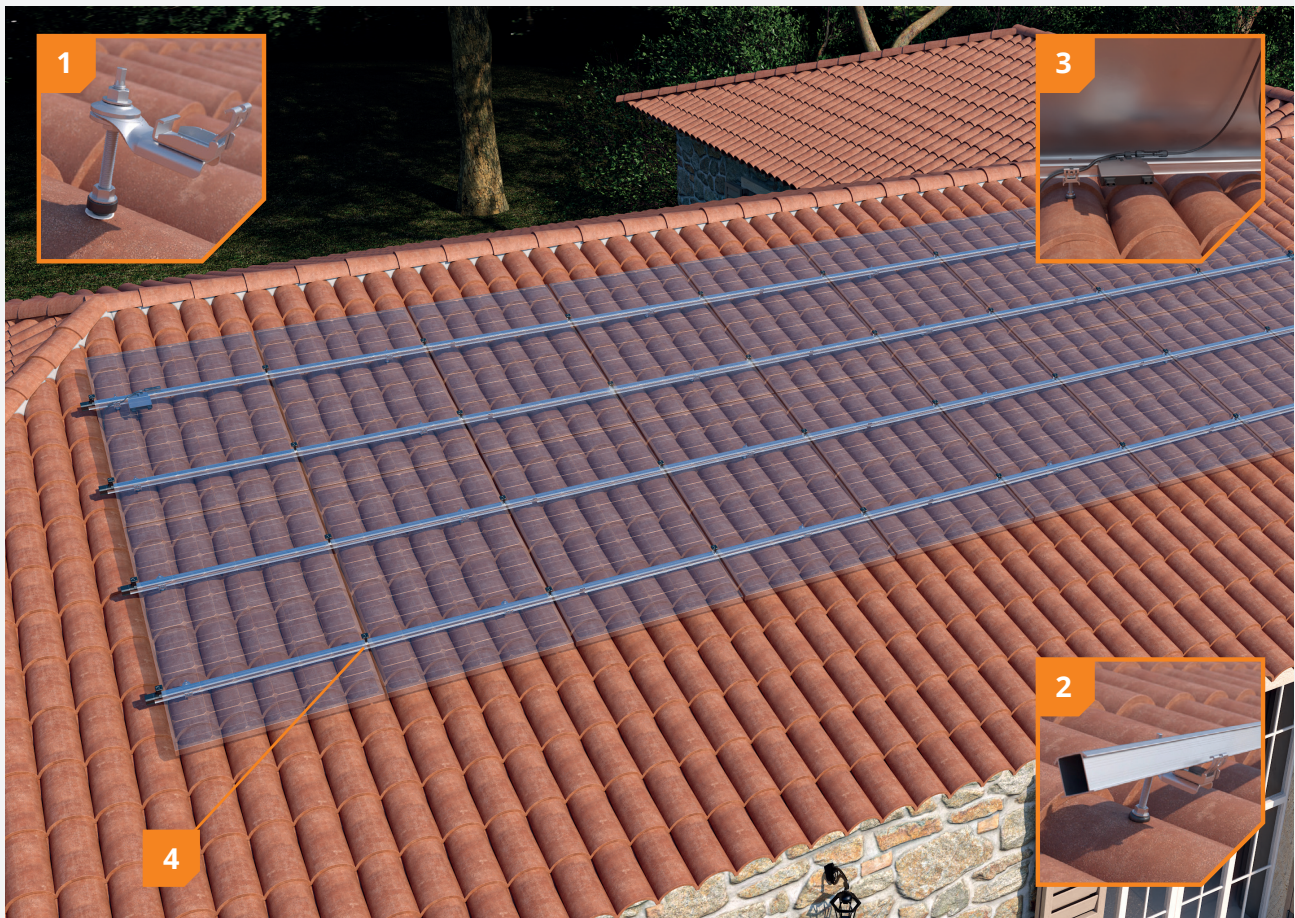
If the cement layer beneath the tile is sufficiently thick, you can install the hanger bolt where you want. For thicknesses of less than 100 mm, you must locate the purlins/trusses. The hanger bolt must then be mounted in the purlin/truss. It is also important to ensure the area is water tight when mounting the hanger bolt on an Arabic tiled roof. Use a chemical anchor for this. Consult your supplier about the available options.

ADVANTAGES FOR THE INSTALLER

- ✔ Both landscape and portrait placement
- ✔ Four components on the roof
- ✔ Only one tool needed
- ✔ Quick and easy installation
- ✔ 20-year product warranty

ADVANTAGES FOR YOUR CUSTOMER

- ✔ 100% waterproof
- ✔ Aesthetic design, also available in black
- ✔ Comprehensively tested
- ✔ 20-year product warranty



1 Unique hanger bolt

The hanger bolt is delivered in preassembled form. Using the flexible adapter, the hanger bolt can also compensate for roof irregularities of up to 10 degrees.

2 Fitted with a ClickFit EVO click connection

The hanger bolt features a self-aligning click connection. This makes it easy to install the mounting rail from above.

3 Integrated cable management

Cables and connectors are neatly and securely held in place in the hanger bolt. You can also simply click the optimizer or micro-inverter onto the rail with the MLPE clip.

4 Always the right size

The universal module clamp is adjustable in height and therefore suitable for solar panels with a frame thickness between 30 and 50 mm. Due to its smart design, this panel clamp can be used as a mid clamp and as an end clamp (in combination with the end cap).

ROOF FASTENERS



ClickFit EVO Hanger Bolt

| | |
|-----------|---------------|
| M10x200mm | 1008011 |
| M10x250mm | 1008012 |
| M12x250mm | 1008013 |
| M12x300mm | 1008014 |
| M12x350mm | 1008015 [DTO] |

MOUNTING RAIL



ClickFit EVO Mounting rail

| | |
|----------------------|---------|
| Mounting rail 1188mm | 1008131 |
| Mounting rail 2338mm | 1008132 |
| Mounting rail 3488mm | 1008133 |
| Mounting rail 3500mm | 1008007 |
| Mounting rail 4638mm | 1008134 |
| Mounting rail 5770mm | 1008135 |

MODULE CLAMP & END CAP



ClickFit EVO Module Clamp Universal grey

1008020



ClickFit EVO Module Clamp Universal black

1008020-B



ClickFit EVO Mounting rail End cap grey

1008060



ClickFit EVO Mounting rail End cap black

1008060-B



ClickFit EVO End Cap without end clamp support grey

1008066



ClickFit EVO End Cap without end clamp support black

1008066-B



ClickFit EVO End Clamp Support grey

1008065



ClickFit EVO End Clamp Support black

1008065-B

ACCESSORIES



ClickFit EVO Mounting Rail Connector Piece

1008061



ClickFit EVO MLPE Clip Light Weight up to 2kg

1008067



ClickFit EVO MLPE Clip Heavy Weight from 2 to 8kg

1008068



ClickFit EVO Self drilling screw 6,3x42mm SW10/T30

1003016 (required for vertical rail installation)



ClickFit EVO Auxiliary set with cable clip

1008064



ClickFit EVO bit torx 30

1008069

Calculator

In the Esdec calculator you can manage and calculate all your projects, for both pitched and flat roofs. One platform with all Esdec mounting systems for the most reliable calculation of your project.

- ✔ Save time: manage all your projects on one platform
- ✔ One calculator for projects on pitched and flat roofs
- ✔ All calculations are based on extensive testing and the latest safety standards

Unlimited calculations: use the calculator for your own project calculations without limits on the roof height. The calculator also takes into account the terrain category, snow load and wind zone to provide accurate advice, specific to your project.

Go to esdec.com/en/calculator



Warranty

ClickFit EVO meets all of the requirements and standards that currently apply. ClickFit EVO comes with a unique 20-year product warranty, thus ensuring the system's quality.


- ✔ Use of premium high tech materials
- ✔ Extensively tested
- ✔ 20 years' product warranty



16042024

BUILDING VALUE FOR SOLAR PROFESSIONALS

Esdec
Londenstraat 16
7418 EE Deventer
The Netherlands

 +31 850 702 000
 info@esdec.com

