

ESDEC

INNOVATIVE MOUNTING SYSTEMS



**RELIABLE AND
QUICK
INSTALLATION ON
PITCHED ROOFS**

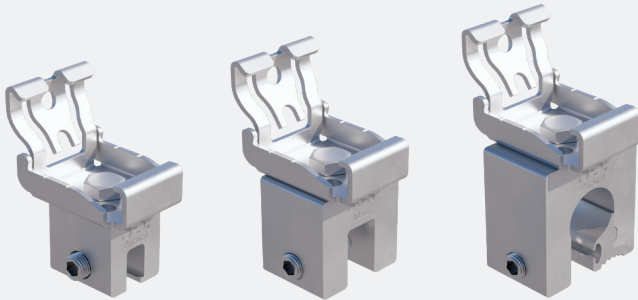
CLICKFIT

EVO

STANDING SEAM ROOF

www.esdec.com

THE 4 COMPONENTS OF CLICKFIT EVO STANDING SEAM ROOF



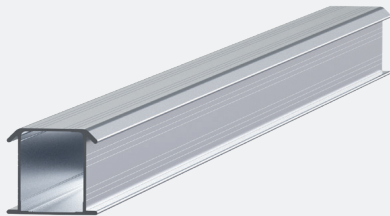
DOUBLE-FOLDED SEAM
S-5-E Mini

SINGLE-FOLDED & SNAP SEAM
S-5-S Mini

ROUND SEAM
S-5-Z Mini

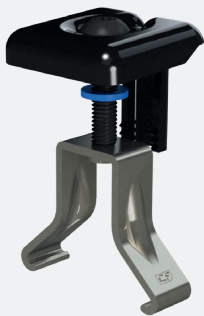
1. SEAM CLAMP

- Pre-assembled seam clamp
- High quality clamp; supplied by S-5!
- Secured in place by tightening Torx screw
- Rotatable clickfit connection; self aligning
- For both landscape and portrait orientation



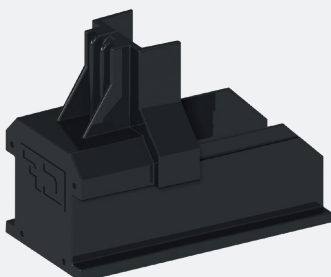
2. MOUNTING RAIL

- Quick and easy to click into the ClickFit EVO click connection on the hook
- Available in different lengths
- Rails can be coupled with a coupler



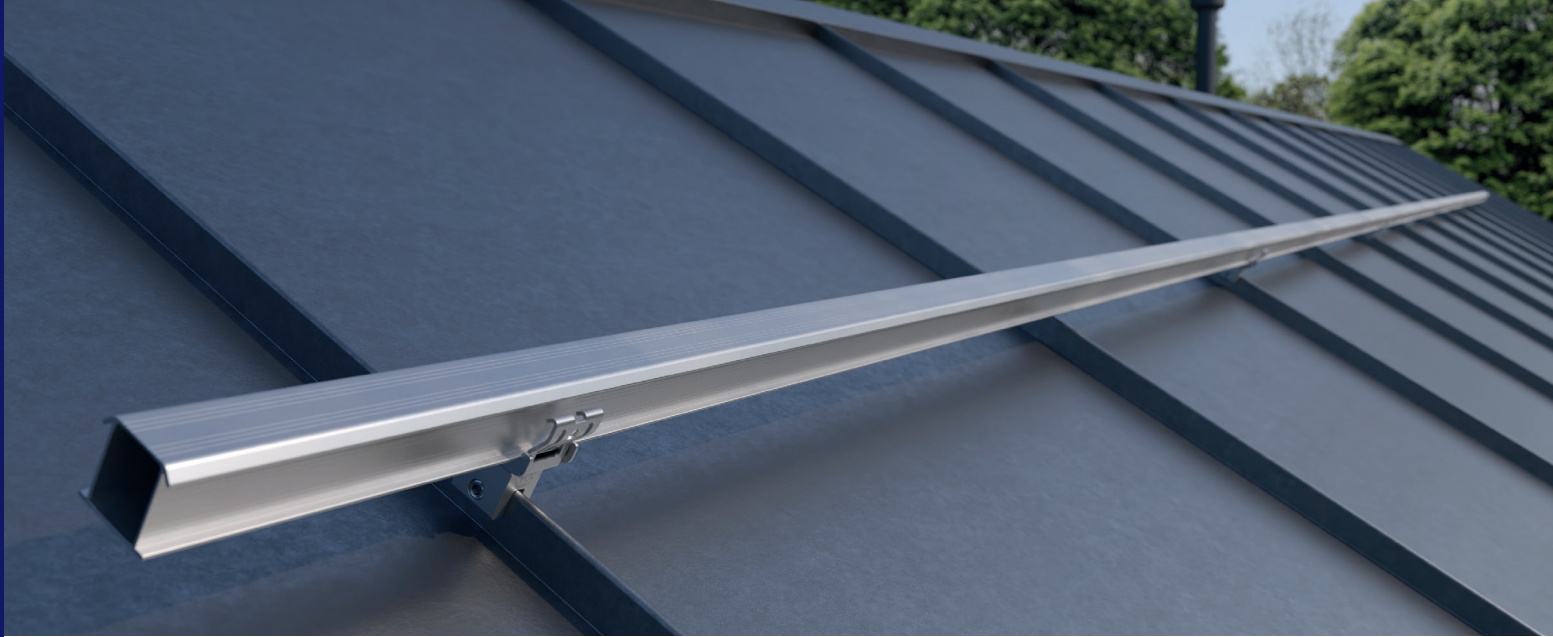
3. UNIVERSAL MODULE CLAMP

- Universal module clamp: suitable for solar panels with frame thickness between 30 and 50 mm
- Can be used as centre clamp or as end clamp in combination with end cap
- Standard assembly
- Including bonding for the solar panels
- Available in grey and black



4. END CAP

- End cap holds the module clamp in its position
- Elongated end cap to allow for aesthetically pleasing finish
- Available in grey and black



EASY INSTALLATION ON THE ROOF

ClickFit EVO Standing Seam: quick & easy

ClickFit EVO for standing seam roofs has been specially developed for mounting the renowned ClickFit EVO system on standing seam roofs. The mounting system consists of only 4 components with which all standard solar panels can be mounted on standing seam roofs with only 1 tool. With ClickFit EVO you can mount the solar panels on the roof in next to no time! The clamps which fix the rails to the folded seam are pre-assembled and ready equipped with the well-known ClickFit EVO click connection and a Torx screw. This saves you a lot of installation time.

From single-folded and double-folded to round seams

The ClickFit EVO system is suitable for most common standing seam roofs, with the exception of copper seam roofs. There are clamps for single- or double-folded seams, snap and round seams. We are proudly using the patented S-5! clamps as the basis for our mounting solution. Choose the appropriate clamp for the respective seam type. The clamp is pre-assembled with our unique ClickFit EVO click connection; all that's needed is to tighten the clamp with the Torx screw on the seam. Then snap the rails into the click connections and mount the solar panels. The seam clamps do not penetrate the roof, so the roof remains completely impervious to water.

Both horizontal and vertical rails possible

Thanks to the rotatable ClickFit EVO click connection on the seam clamps, the mounting system can be used for both portrait and landscape orientation with a horizontal and vertical rail. To obtain the maximum rigidity in the system, we recommend mounting the rails horizontally over the seams. An additional advantage: this orientation offers a lot of flexibility in the positioning of the solar panels.



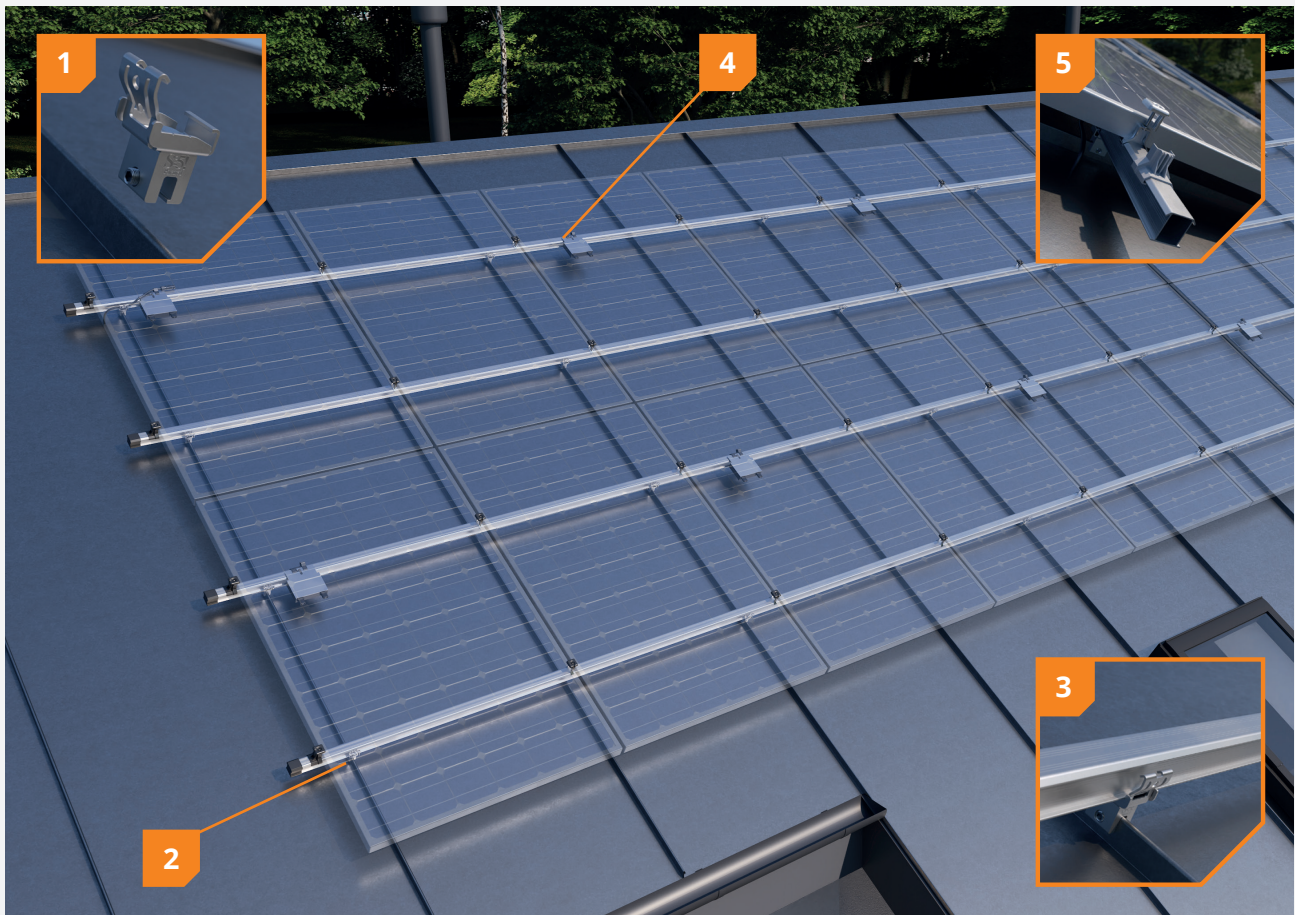
Our tip: use our calculator to generate a calculation for your project; there is a good chance that due to the high rigidity of the ClickFit EVO system, you can skip some seams, reducing your purchase costs and installation time!

ADVANTAGES FOR THE INSTALLER

- ✓ Pre-assembled seam clamp
- ✓ Only 4 components on the roof
- ✓ Only one tool needed
- ✓ Quick and easy installation
- ✓ 20-year product warranty

ADVANTAGES FOR THE INSTALLER

- ✓ 100% waterproof
- ✓ The roof remains intact
- ✓ Aesthetic design, also available in black
- ✓ Extensively tested product
- ✓ 20-year product warranty



1 Assembled clamp

Install quickly and easily with the pre-assembled clamp that is pre-fitted with ClickFit EVO clicker and Torx screw.

2 Fixed in place with integrated torx screw

The clamp is attached to the seam by tightening the integrated Torx screw.

3 Unique click connection

The clamp comes with a self-aligning click connection. This makes it easy to install the mounting rail from above.

4 Integrated cable management

Cables and connectors are neatly and securely held in place in the roof hook. You can also simply click the optimizer or micro-inverter onto the rail with the MLPE clip.

5 Always the right measurements

The universal module clamp is adjustable in height and therefore suitable for solar panels with a frame thickness between 30 and 50 mm. Due to its smart design, this panel clamp can be used as a mid clamp and as an end clamp (in combination with the end cap).

ROOF FASTENERS



ClickFit EVO Round Seam Clamp 23mm
1008031



ClickFit EVO Double-folded Seam Clamp 9mm
1008033



ClickFit EVO Single Folded Seam Clamp 14mm
1008035

MOUNTING RAIL



ClickFit EVO Mounting rail	
Mounting rail 1188mm	1008131
Mounting rail 2338mm	1008132
Mounting rail 3488mm	1008133
Mounting rail 3500mm	1008007
Mounting rail 4638mm	1008134
Mounting rail 5770mm	1008135

MODULE CLAMP & END CAP



ClickFit EVO Module Clamp Universal grey
1008020



ClickFit EVO Module Clamp Universal black
1008020-B



ClickFit EVO Mounting rail End cap grey
1008060



ClickFit EVO Mounting rail End cap black
1008060-B



ClickFit EVO End Cap without end clamp support grey
1008066



ClickFit EVO End Cap without end clamp support black
1008066-B



ClickFit EVO End Clamp Support grey
1008065



ClickFit EVO End Clamp Support black
1008065-B

ACCESSORIES



ClickFit EVO Mounting Rail Connector Piece
1008061



ClickFit EVO MLPE Clip Light Weight up to 2kg
1008067



ClickFit EVO MLPE Clip Heavy Weight from 2 to 8kg
1008068



ClickFit EVO Self drilling screw 6.3x42mm SW10/T30
1003016 (required for vertical rail installation)



ClickFit EVO Auxiliary set with cable clip
1008064



ClickFit EVO bit torx 30
1008069

Calculator

In the Esdec calculator you can manage and calculate all your projects, for both pitched and flat roofs. One platform with all Esdec mounting systems for the most reliable calculation of your project.

- ✔ Save time: manage all your projects on one platform
- ✔ One calculator for projects on pitched and flat roofs
- ✔ All calculations are based on extensive testing and the latest safety standards

Unlimited calculations: use the calculator for your own project calculations without limits on the roof height. The calculator also takes into account the terrain category, snow load and wind zone to provide accurate advice, specific to your project.

Go to esdec.com/en/calculator



Warranty

ClickFit EVO meets all of the requirements and standards that currently apply. ClickFit EVO comes with a unique 20-year product warranty, thus ensuring the system's quality.

- ✔ Use of premium high tech materials
- ✔ Extensively tested
- ✔ 20 years' product warranty





16042024

BUILDING VALUE FOR SOLAR PROFESSIONALS

Esdec
Londenstraat 16
7418 EE Deventer
The Netherlands

 +31 850 702 000
 info@esdec.com