

20 700 370 Product version from 7/31/2009



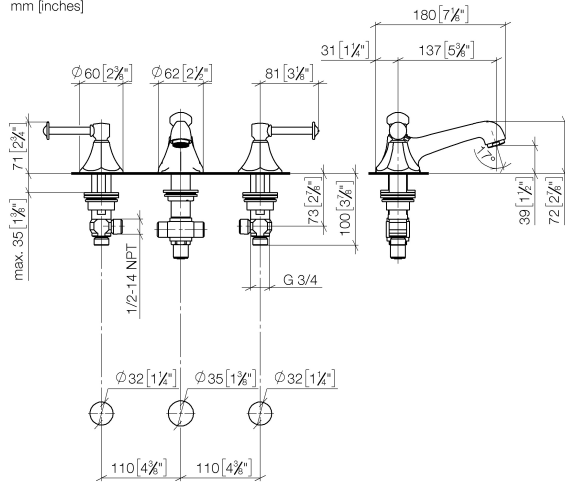
- 135mm projection
- fixed spout
- circular, air-enriched flow
- height of mixer 72 mm
- height up to aerator 40 mm
- hole diameter valve 32 mm
- hole diameter spout 35 mm
- without rosette
- 2x 1/2" x 1/2" high pressure hose
- max. flow 7 l/min
- lead-free
- This product can help a building meet the requirements of Green Building Rating Systems, e.g. LEED®, BREEAM®, DGNB
- WRAS

Only suitable for basins with an overflow.

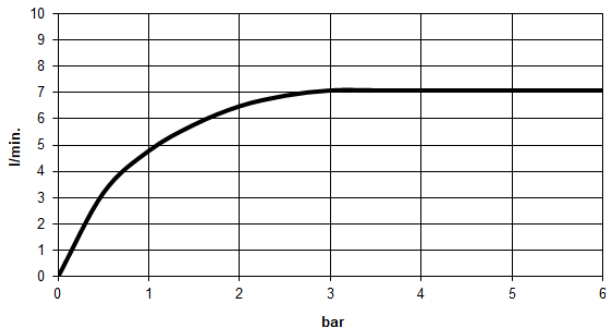
	Brushed Platinum	20 700 370-06
	Chrome	20 700 370-00
	Platinum	20 700 370-08
	Durabrand (23kt Gold)	20 700 370-09
	Brushed Durabrand (23kt Gold)	20 700 370-28
	Brushed Gold (PVD)	20 700 370-37
	Brushed Dark Brass (PVD)	20 700 370-39
	Brushed Bronze (PVD)	20 700 370-42
	Brushed Dark Bronze (PVD)	20 700 370-43
	Brushed Dark Platinum	20 700 370-99

20 700 370 Product version from 7/31/2009

mm [inches]



**Flow rate chart**



**Codes & Standards**

DIN 4109

Executive Order  
no. 1007

ISO 3822

Scottish Water  
Byelaws

UK Water Supply  
Regulations

Ü-Zeichen



# MADISON Three-hole basin mixer with pop-up waste - Brushed Platinum

MADISON

20 700 370 Product version from 7/31/2009

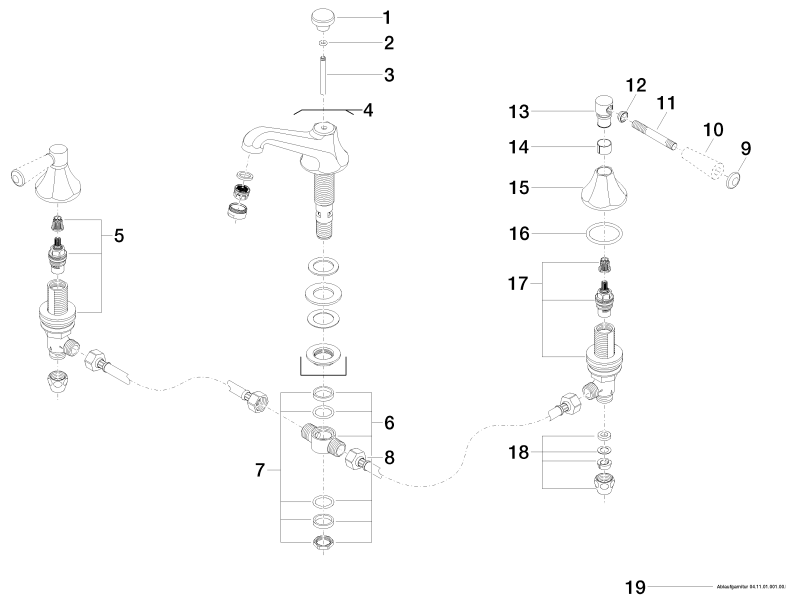
## Certificates and sustainability

---

GDV_0400	LGA_8	WRAS_240602	EPD-DOR-20230287 -IBA1-EN Environmental.prod uct-declarat
----------	-------	-------------	--

20 700 370 Product version from 7/31/2009

Parts for other finishes can be found here: [Chrome](#)



## Spare parts list

No.	Item Number	Name	Quantity used	Delivery time
	12 09 20 37 001-06	Handle Ø 16 x 6 mm - Brushed Platinum	2.00	20
	11 09 28 22 013 90	Mounting Ø 10 x 75 mm -	2.00	14
	9 09 30 30 062-06	Cover Ø 24 x 8 mm - Brushed Platinum	2.00	20
	19 90 11 01 001 00-06	Basin Waste - Brushed Platinum	1.00	20
	13 09 20 82 000-06	Handle Ø 23 x 41 mm - Brushed Platinum	2.00	20
	14 90 18 40 041 00 90	Sleeve -	2.00	14
	4 13 700 380-06	MADISON Spout without pop-up waste Madison 135 mm - Brushed Platinum	1.00	20
	10 11 170 370-06	MADISON Lever insert - Brushed Platinum	2.00	20
	1 09 20 36 030-06	Pull button Ø 30 x 27 mm - Brushed Platinum	1.00	20
	16 90 14 10 043 00 90	O-Ring 40,0 x 4,0 mm -	2.00	14
	17 90 17 11 040 50 90	Deck valve anti-clockwise closing 1/2" -	1.00	14
	5 90 17 11 040 51 90	Deck valve clockwise closing 1/2" -	1.00	14
	6 90 17 11 020 10 90	Distributor complete -	1.00	14
	18 90 23 30 040 00-06	Union piece - Brushed Platinum	2.00	20
	2 90 14 10 062 00 90	O-Ring EPDM 70 6,0 x 2,5 mm -	1.00	14
	8 04 30 04 096 00 90	High pressure hose with sleeve nut 1/2" x 1/2" x 400 mm -	2.00	14
	7 90 23 10 012 00 90	Mounting Distributor, 1/2" + 3/4" -	1.00	14
	15 09 27 37 014-06	Rosette Ø 60 x 43 mm - Brushed Platinum	2.00	20
	3 09 31 09 004-06	Pull rod for pop-up waste Ø 6 x 425 mm - Brushed Platinum	1.00	20