

## ONETRACK CEILING CLAMP STEEL S-9000/111 9200755

### Features

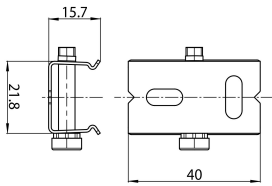
- OneTrack accessory, ceiling clamp in zinc plated steel.



### Product Overview

Product name	ONETRACK CEILING CLAMP STEEL S-9000/111
Technology	Accessory
General application	Museums & Galleries, Office
ETIM Class	EC000101
Housing colour	Silver
Warranty	5 years

### Technical drawings



### Data table

#### GENERAL DATA

Product name	ONETRACK CEILING CLAMP STEEL S-9000/111
--------------	---

## ONETRACK CEILING CLAMP STEEL S-9000/111 9200755

Technology	Accessory
General application	Museums & Galleries, Office
ETIM Class	EC000101
Warranty	5 years

### ELECTRICAL DATA

Control gear required	No
-----------------------	----

### PHYSICAL DATA

Housing colour	Silver
Nominal Product Length (mm)	40
Nominal Product Width (mm)	21.8
Nominal Product Height (mm)	15.7
Weight (kg)	0.034

### PACKAGING

Single packaging type	Plastic
Packaging single length / height (cm)	3.5
Packaging single width (cm)	2.8
Packaging single depth (cm)	3.5
Units per outer package	100
Packaging outer length / height (cm)	17.0
Packaging outer width (cm)	22.0
Packaging outer depth (cm)	8.0

### SAFETY DATA

Special purpose lamp	No
Dry applications use only	No
Suitable for household illumination	No