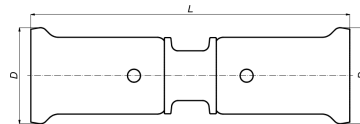


15PK-6363: Straight coupling 63x63



Commercial information

PVDF press fittings in combination with multilayer pipe, a completely corrosion-free system. The synthetic press fittings are made from injection moulded PVDF (Polyvinylidene fluoride)*. PVDF offers the user a unique combination of properties:

- Highly resistant to pressure and temperature
- Excellent mechanical strength
- Extreme flexibility: bending up to 10° is possible
- Perfectly suited for drinking water and food
- Highly resistant to chemicals and corrosion
- Embedding is possible without extra protection

Certificates

ATG, QB (CSTBat), DVGW Wasser, ETA, KIWA, ÖVGW Wasser, SINTEF, WRAS, KOMO, STF, ÖN EN 21003-2/-3, GOST-R, ITC, TSU, AFNOR, PZH, ACS, DNV-GL, Aenor, Sans 21003, RISE, EMI

Applications

Potable water, Heating, Compressed air, Cooling, Demi Water, Sanitary

Solutions

Building installations, Industry, Utility, Shipbuilding

Technical characteristics

Material connection 1	Polyvinylidene fluoride (PVDF)	Bend radius	0 Millimetre
Material quality connection 1	Polyvinylidene fluoride (PVDF) (expired)	Outer pipe diameter connection 1	63 Millimetre
Surface protection connection 1	Untreated	Wall thickness, connection 1	0.85 Millimetre
Surface treatment connection 1	Untreated	Outer pipe diameter connection 2	63 Millimetre
Material connection 2	Polyvinylidene fluoride (PVDF)	Wall thickness, connection 2	0.85 Millimetre
Material quality connection 2	Polyvinylidene fluoride (PVDF) (expired)	Zeta value	0.327
Surface protection connection 2	Untreated	Length	172.5 Millimetre
Surface treatment connection 2	Untreated	Length of connection 1	86.5 Millimetre
Shape	Straight	Working length connection 1	22.5 Millimetre
Reducing	✗	Length of connection 2	86.5 Millimetre
Eccentric	✗	Working length connection 2	22 Millimetre
System specific	✓	Wrench width	0 Millimetre
Connection 1	Press sleeve	Wrench width union nut	0 Millimetre
Contour code connection 1	BE	Tightening moment	0 0 Newtonmetre
Connection 2	Press sleeve	Medium temperature (continuous)	-10 70 Degrees celsius
Contour code connection 2	BE	Max. operating pressure at 20 °C	10 Bar
Main colour fitting	Black	Standard Dimension Ratio (SDR)	0
Material sealing	Ethylene-propylene diene monomer rubber (EPDM)		
With buffer stud	✓		
High tensile strength	✗		
With thermal insulation	✗		
Ring stiffness class	Other		
With sealing rings/gaskets	✓		
Capped	✗		
With connection indicator	✗		
With drain valve	✗		
With de-aerator	✗		
FM quality mark	✗		
LPCB quality mark	✗		
ULC quality mark	✗		
UL quality mark	✗		
DIN-CERTCO certificate	✗		
VdS quality mark	✗		
With approval for TÜV	✗		
DVGW quality mark for gas	✗		
DVGW quality mark for water	✓		
Certified according to NF 545	✗		
KIWA certified	✓		
Gastec QA mark	✗		
KOMO certified	✓		
Type approval according to BBR/EKS	✗		

Related products

Product code	GTIN	Description
BE63	05414764017511	Henco Jaws (universal) BE-Profile 63x4,5

Image

