

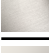





36 200 361



- Drehumstellung
  - Rosette Ø 60 mm
  - Porzellanplättchen NEUTRAL
- Passt zu MADISON**

Passt zu MADISON

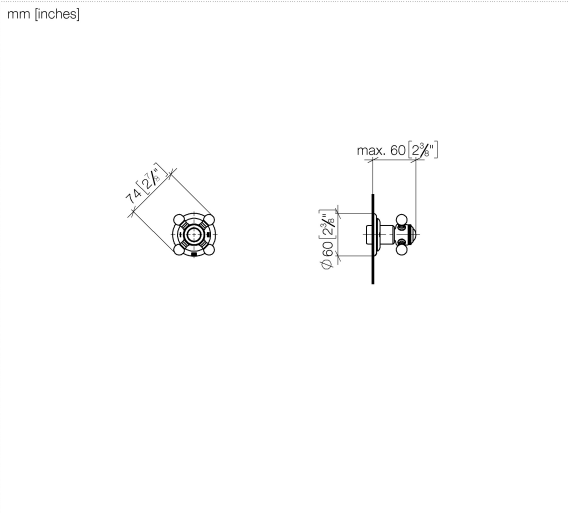
|  |                                  |               |
|--|----------------------------------|---------------|
|  | Messing gebürstet<br>(23kt Gold) | 36 200 361-28 |
|  | Chrom                            | 36 200 361-00 |
|  | Platin gebürstet                 | 36 200 361-06 |
|  | Platin                           | 36 200 361-08 |
|  | Messing (23kt<br>Gold)           | 36 200 361-09 |
|  | Dark Platinum<br>gebürstet       | 36 200 361-99 |

Benötigtes Zubehör

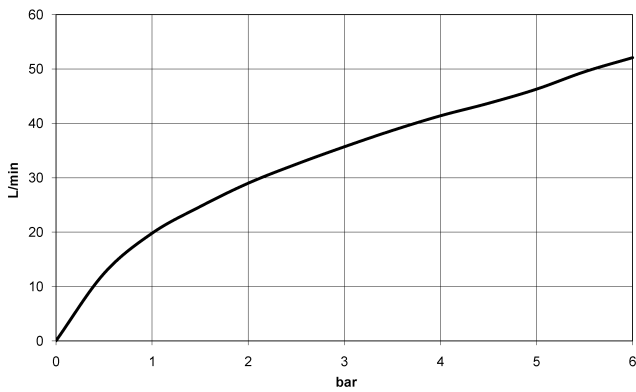


- UP-Zweiwege-Umstellung -** 35 202 970 90
- Max. Einbautiefe 155 mm
  - Min. Einbautiefe 85 mm

36 200 361



**Durchflussdiagramm**



**Codes & Standards**

DIN 4109

ISO 3822

Scottish Water  
Byelaws

UK Water Supply  
Regulations

**Ü-Zeichen**



MADISON UP-Zweiwege-Umstellung - Messing gebürstet (23kt Gold)

MADISON

36 200 361

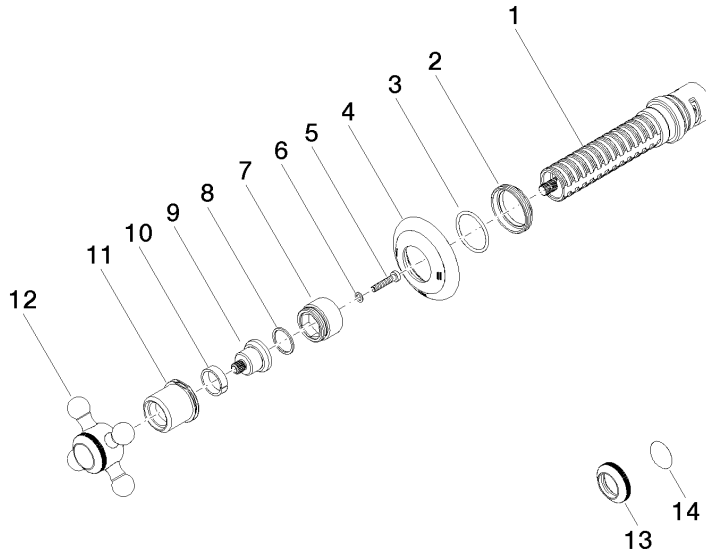
Zertifikate

WRAS\_2307

LGA\_38

36 200 361

Produktversion ab 4/1/2022





# MADISON UP-Zweiwege-Umstellung - Messing gebürstet (23kt Gold)

MADISON

36 200 361

## Ersatzteilstückliste

### Produktversion ab 4/1/2022

| Nr. | Artikelnummer      | Benennung    | Verbaumenge | Lieferzeit |
|-----|--------------------|--------------|-------------|------------|
|     | 90 90 03 304 10 90 | Umstellung - | 14          | 2          |