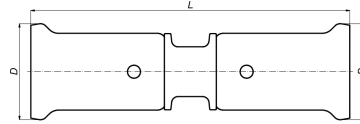


## 15PK-1616: Straight coupling 16x16



### Commercial information

PVDF press fittings in combination with multilayer pipe, a completely corrosion-free system. The synthetic press fittings are made from injection moulded PVDF (Polyvinylidene fluoride)\*. PVDF offers the user a unique combination of properties:

- Highly resistant to pressure and temperature
- Excellent mechanical strength
- Extreme flexibility: bending up to 10° is possible
- Perfectly suited for drinking water and food
- Highly resistant to chemicals and corrosion
- Embedding is possible without extra protection

### Certificates

ATG, QB (CSTBat), DVGW Wasser, ETA, KIWA, ÖVGW Wasser, SINTEF, WRAS, KOMO, STF, ÖN EN 21003-2/-3, GOST-R, ITC, TSU, AFNOR, PZH, ACS, DNV-GL, Aenor, Sans 21003, Kontrol Biro, RISE, EMI

### Applications

Potable water, Heating, Compressed air, Cooling, Demi Water, Sanitary


### Solutions

Building installations, Industry, Utility, Shipbuilding

## Technical characteristics

Material connection 1	Polyvinylidene fluoride (PVDF)	Bend radius	0 Millimetre
Material quality connection 1	Polyvinylidene fluoride (PVDF) (expired)	Outer pipe diameter connection 1	16 Millimetre
Surface protection connection 1	Untreated	Wall thickness, connection 1	0.7 Millimetre
Surface treatment connection 1	Untreated	Outer pipe diameter connection 2	16 Millimetre
Material connection 2	Polyvinylidene fluoride (PVDF)	Wall thickness, connection 2	0.7 Millimetre
Material quality connection 2	Polyvinylidene fluoride (PVDF) (expired)	Zeta value	0.689
Surface protection connection 2	Untreated	Length	73.5 Millimetre
Surface treatment connection 2	Untreated	Length of connection 1	37 Millimetre
Shape	Straight	Working length connection 1	10 Millimetre
Reducing	✘	Length of connection 2	37 Millimetre
Eccentric	✘	Working length connection 2	10 Millimetre
System specific	✓	Wrench width	0 Millimetre
Connection 1	Press sleeve	Wrench width union nut	0 Millimetre
Contour code connection 1	TH	Tightening moment	0 0 Newtonmetre
Connection 2	Press sleeve	Medium temperature (continuous)	-10 70 Degrees celsius
Contour code connection 2	TH	Max. operating pressure at 20 °C	16 Bar
Main colour fitting	Black	Standard Dimension Ratio (SDR)	0
Material sealing	Ethylene-propylene diene monomer rubber (EPDM)		
With buffer stud	✓		
High tensile strength	✘		
With thermal insulation	✘		
Ring stiffness class	Other		
With sealing rings/gaskets	✓		
Capped	✘		
With connection indicator	✘		
With drain valve	✘		
With de-aerator	✘		
FM quality mark	✘		
LPCB quality mark	✘		
ULC quality mark	✘		
UL quality mark	✘		
DIN-CERTCO certificate	✘		
VdS quality mark	✘		
With approval for TÜV	✘		
DVGW quality mark for gas	✘		
DVGW quality mark for water	✓		
Certified according to NF 545	✘		
KIWA certified	✓		
Gastec QA mark	✘		
KOMO certified	✓		
Type approval according to BBR/EKS	✘		

## Related products

Product code	GTIN	Description	Image
PRESCHECK1432	05414764017238	Henco Tool to control the accuracy of a pressing Ø14-32	
BE16	05414764017238	Henco Jaws (universal) BE/TH-Profile 16x2	