

# Base for fourfold, potential-free push button, 24 V N.O. with amber LED, screw fixing

**170-47151**



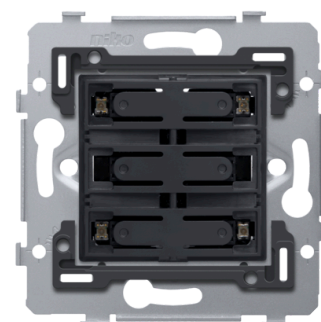
Mechanism for fourfold potential-free push button, 24 V N.O. with screw fixing. This mechanism is equipped with an amber LED. A finishing set in the colour of your choice must be ordered separately.

This article is protected by at least one patent (or patent application). For more info on patents, see [www.niko.eu/innovation](http://www.niko.eu/innovation).

- all connections terminals are located at the top of the base:

Niko quality:

- metal base is held firmly in place, even on uneven walls, doesn't break and is not subject to stress cracking (small ruptures)
- firm metal claws with a large engagement depth (31 mm) remain fixed when mounted and can be screwed tightly to ensure that the socket outlets can remain fixed in the wall for a longer time and to avoid the mechanisms should become warped



## Technical data

Base for fourfold, potential-free push button, 24 V N.O. with amber LED, screw fixing.

- Function: the base insert is made of polycarbonate. The insert is on all sides equipped with snap hooks that hold the central plate (with or without text field) in place. When the feedback LEDs are connected, they illuminate the standing studs
- Type of control: push button
- Number of buttons: 4
- Led function: feedback/orientation
- Number of leds: 4
- Protection degree: IP41 for the combination of a mechanism, central plate and faceplate
- Impact resistance: the combination of a mechanism, a central plate and a faceplate has an impact-resistance of IK06
- Connector block: on its back side, the mechanism is equipped with connector blocks: one for the connection of the fourfold, potential-free push button and one for the connection of the LEDs

- Flush-mounting frame type:
  - 1 mm-thick metal
  - galvanized on all sides after cutting, even on the cut edges
  - with 4 grooves with screw hole of 7 mm
  - with 4 screw holes (indicated by a screw symbol) with a diameter of 3 mm for mounting on panels
- Type of fastening:
  - with screws for simple fixing in a flush-mounting box with grip surfaces
- Centre-to-centre distance:
  - horizontal coupling and vertical coupling with centre-to-centre distance 71 mm
  - horizontal connection of several bases is quick and perfect thanks to the folded-up dovetails on the left and right side
  - extra robustness due to the folded-up edges on the outside of the base and the continuation to the inside of the base
- Base end border: the flush-mounting frame is equipped, both on the top and the bottom, with a dark grey, plastic end border. This border is made of PC+ASA and is joined to the flush-mounting frame using a melting process. The corners of the two end borders are equipped with rectangular openings (7.9 x 1.5 mm) each containing a multi-positional snap hook. Thanks to the snap hooks, the 4 rectangular openings ensure that the faceplate can always be attached flat to the wall, even in cases of untidy plasterwork. This works in two directions: If the flush-mounting box sticks out of the plasterwork, the multi-positional snap hooks can compensate for a 1 to 1.2 mm margin; if the flush-mounting box is sunk too deeply in the plasterwork, the snap hooks can compensate for up to a 1.8 mm margin. The end borders also have 4 round openings that ensure the correct positioning of the faceplate in relation to the central plate
- Terminal wire connection: screw terminals
- Terminals with screw driver slot : every screw is fitted with a screwdriver slot that prevents the screwdriver from sliding off the screwhead
- Terminal screw head: slotted screwhead (slot 0.6 x 3.5 mm)
- Terminal with permanent screws: each connector block is equipped with cage clamps with permanent screws
- Terminals wire capacity: 0.5 – 0.8 mm
- Suitable type of wire: rigid (solid or stranded) and flexible
- Markings on the flush-mounting frame: indelibly indicated at the rear side: terminals
- Minimum ambient temperature: 5 °C
- Maximum ambient temperature: 40 °C
- Dimensions (HxWxD): 73 mm x 73 mm
- Marking: CE

## Wiring diagram

