

36 425 970 Product version up to 8/24/2020



- cover plate Ø 150 mm
- temperature control handle with safety limit stop at 38°C
- hot water temperature limiter, can be preset
- WRAS

	Chrome	36 425 970-00
	Brushed Platinum	36 425 970-06
	Platinum	36 425 970-08
	Dark Chrome	36 425 970-19
	Light Gold (PVD)	36 425 970-26
	Brushed Light Gold (PVD)	36 425 970-27
	Brushed Durabrass (23kt Gold)	36 425 970-28
	Matte Black	36 425 970-33
	Brushed Gold (PVD)	36 425 970-37
	Brushed Dark Brass (PVD)	36 425 970-39
	Brushed Bronze (PVD)	36 425 970-42
	Brushed Dark Bronze (PVD)	36 425 970-43
	Brushed Champagne (22kt Gold)	36 425 970-46
	Champagne (22kt Gold)	36 425 970-47
	Brushed Chrome	36 425 970-93
	Brushed Dark Platinum	36 425 970-99

Required miscellaneous

xGRID Installation track 555 mm - 12 360 970 90



Required miscellaneous

Concealed thermostat - 35 425 970 90



- min. recess depth 80 mm
- max. recess depth 136 mm

Required miscellaneous

Concealed thermostat with built-in isolators - 35 426 970 90



- min. recess depth 80 mm
- max. recess depth 136 mm

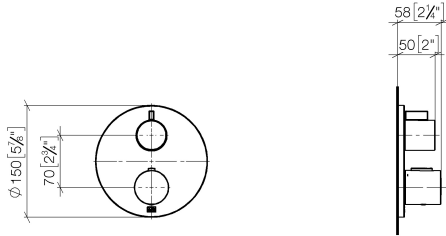
Recommended miscellaneous

xGRID Attachment set for integrating in the dry wall construction - 12 340 970 90

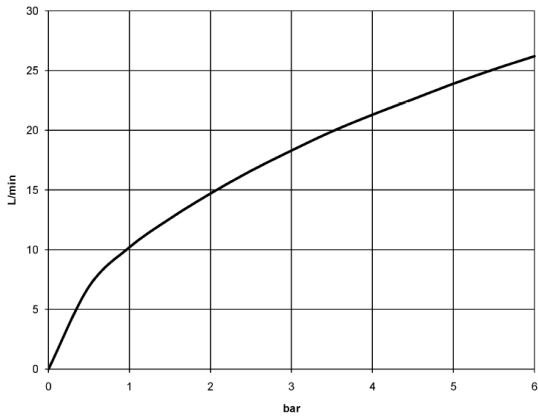


36 425 970 Product version up to 8/24/2020

mm [inches]



Flow rate chart



Codes & Standards

DIN 4109	EN 1111	ISO 3822	Scottish Water Byelaws
UK Water Supply Regulations	Ü-Zeichen	VA-Zeichen	



Concealed thermostat with one function volume control - Chrome

SERIES SPECIFIC

36 425 970 Product version up to 8/24/2020

Certificates and sustainability

LGA_19

ETA_20

LGA_19

DVGW_DW-
6512DN0

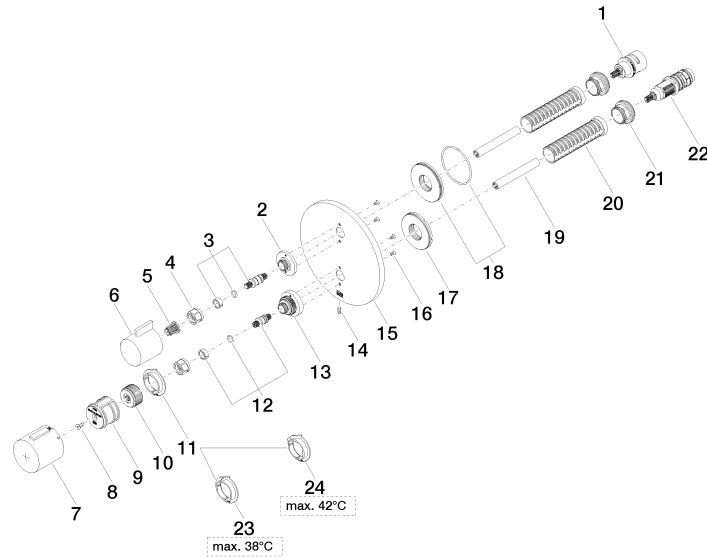
WRAS_250402

EPD-DOR-20230287

-IBA1-EN

Environmental.prod
uct-declarat

36 425 970 Product version up to 8/24/2020



Spare parts list

No.	Item Number	Name	Quantity used	Delivery time
13	09 12 12 051-00	Fixing cap mount Ø 35 x 26,5 mm - Chrome	1.00	20
19	90 23 01 124 00 90	Sleeve -	2.00	14
6	09 20 67 006-00	Handle for thermostat 41 x 40 x 53 mm - Chrome	1.00	82
9	90 12 12 052 00 90	Retainer -	1.00	14
5	90 12 12 002 00 90	Fixing cap white Ø 15 x 12 mm -	1.00	14
10	09 12 12 054 90	Handle mount Ø 28,50 x 16 mm -	1.00	14
8	90 30 30 124 00 90	Mounting Countersunk screw with hexagon socket M4 x 10 mm -	1.00	14
3	04 29 06 111 01-00	Spindle with double toothing Ø 12,15 x 37,2 mm - Chrome	1.00	20
16	09 30 30 157 90	Mounting Countersunk screw with hexagon socket M3 x 6 mm -	4.00	14
17	09 30 01 296 90	Shaft M24x1 Ø52 external -	1.00	14
12	04 29 06 024 01-00	Spindle with double toothing Ø 12,15 x 30 mm - Chrome	1.00	20
24	09 28 10 189 90	Temperature limitation ring Thermostat, black -	1.00	14
14	09 31 11 134 90	Mounting Threaded pin with hexagon socket with point M4 x 10 mm -	1.00	14
23	09 28 10 188 90	Temperature limitation ring Thermostat, 38° stop -	1.00	14
22	90 15 02 013 00 90	Thermostat cartridge Ø 27 x 82 mm, 16-18 l/min. -	1.00	14
2	09 12 12 053-00	Fixing cap mount Ø 34,5 x 15 mm - Chrome	1.00	20
21	09 24 04 257 90	Mounting Nut Ø 32 x 19,5 mm -	2.00	14
4	90 23 30 023 00 90	Cap nut -	2.00	14
15	09 11 02 242-00	Rosette Ø 150 x 9 mm - Chrome	1.00	20
18	90 30 01 190 00 90	Connection Ø 55 x 9 mm -	1.00	14
7	90 17 33 017 00-00	Handle Thermostat Ø48mm with marking - Chrome	1.00	20
20	90 18 40 077 01 90	Sleeve -	2.00	14
11	09 28 10 187 90	Temperature limitation ring Thermostat -	1.00	14
1	90 90 03 166 00 90	Head part Temperature maintenance head part Lifetime 90° Motion -	1.00	14