

# Socket for fourfold, potential-free push button, 24 V N.O., screw fixing

**170-47051**



4 year warranty

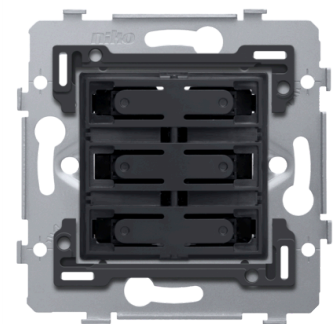
Mechanism for fourfold potential-free push button, 24 V N.O. with screw fixing. A finishing set in the colour of your choice must be ordered separately.

This article is protected by at least one patent (or patent application). For more info on patents, see [www.niko.eu/innovation](http://www.niko.eu/innovation).

- all connections terminals are located at the top of the base:

Niko quality:

- metal base is held firmly in place, even on uneven walls, doesn't break and is not subject to stress cracking (small ruptures)
- firm metal claws with a large engagement depth (31 mm) remain fixed when mounted and can be screwed tightly to ensure that the socket outlets can remain fixed in the wall for a longer time and to avoid the mechanisms should become warped



## Technical data

Socket for fourfold, potential-free push button, 24 V N.O., screw fixing.

- Function: The base insert is made of polycarbonate. The insert is on all sides equipped with snap hooks that hold the central plate (with or without text field) in place
- Type of control: push button
- Number of buttons: 4
- Led function: feedback/orientation
- Number of leds: 0
- Protection degree: IP41 for the combination of a mechanism, central plate and faceplate
- Impact resistance: the combination of a mechanism, a central plate and a faceplate has an impact-resistance of IK06
- Connector block: on its backside, the mechanism is equipped with one connector block for the connection of the potential-free push button
- Flush-mounting frame type:
  - 1 mm-thick metal
  - galvanized on all sides after cutting, even on the cut edges
  - with 4 grooves with screw hole of 7 mm

- with 4 screw holes (indicated by a screw symbol) with a diameter of 3 mm for mounting on panels
- Type of fastening:
  - with screws for simple fixing in a flush-mounting box with grip surfaces
- Centre-to-centre distance:
  - horizontal coupling and vertical coupling with centre-to-centre distance 71 mm
  - horizontal connection of several bases is quick and perfect thanks to the folded-up dovetails on the left and right side
  - extra robustness due to the folded-up edges on the outside of the base and the continuation to the inside of the base
- Base end border: the flush-mounting frame is equipped, both on the top and the bottom, with a dark grey, plastic end border. This border is made of PC+ASA and is joined to the flush-mounting frame using a melting process. The corners of the two end borders are equipped with rectangular openings (7.9 x 1.5 mm) each containing a multi-positional snap hook. Thanks to the snap hooks, the 4 rectangular openings ensure that the faceplate can always be attached flat to the wall, even in cases of untidy plasterwork. This works in two directions: If the flush-mounting box sticks out of the plasterwork, the multi-positional snap hooks can compensate for a 1 to 1.2 mm margin; if the flush-mounting box is sunk too deeply in the plasterwork, the snap hooks can compensate for up to a 1.8 mm margin. The end borders also have 4 round openings that ensure the correct positioning of the faceplate in relation to the central plate
- Terminal wire connection: screw terminals
- Terminals with screw driver slot : every screw is fitted with a screwdriver slot that prevents the screwdriver from sliding off the screwhead
- Terminal screw head: slotted screwhead (slot 0.6 x 3.5 mm)
- Terminal with permanent screws: each connector block is equipped with cage clamps with permanent screws
- Terminals wire capacity: 0.5 – 0.8 mm
- Suitable type of wire: rigid (solid or stranded) and flexible
- Markings on the flush-mounting frame: indelibly indicated at the rear side: terminals
- Minimum ambient temperature: 5 °C
- Maximum ambient temperature: 40 °C
- Dimensions (HxWxD): 73 mm x 73 mm
- Marking: CE

## Wiring diagram

