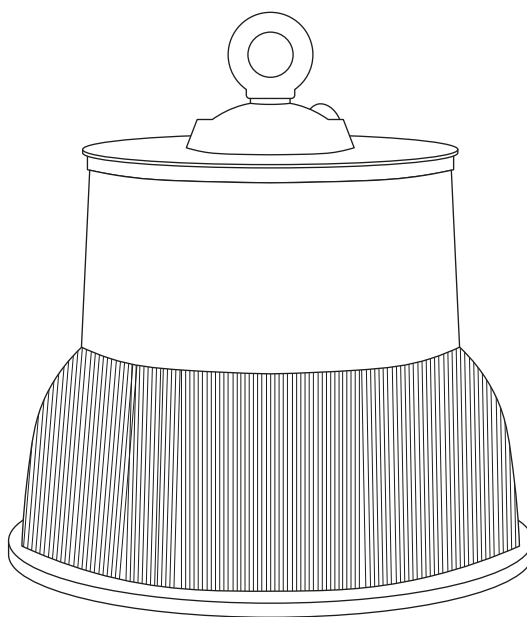




Read these instructions & save for future use

High bay | 50 watt | 130 Lm/W | tri-white | non dimmable



Article number **950-024**

Brand **Tronix Lighting**

Type **Industrial lighting**

Contents of this product **1x 50W high bay tri-white**

Technical datasheet **Digitally available
on our webshop**



*View instructions and
technical data also on
our website*

TRONIX



Before first use

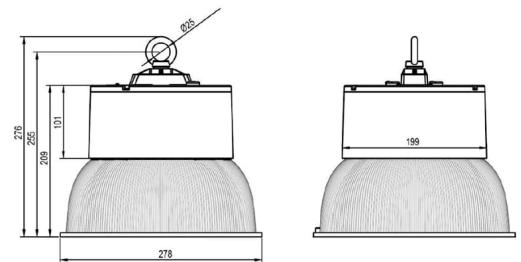
Before getting started with this product, it is advisable to check the order completeness and any damage. If this is the case, please contact Tronix Lighting.

Description

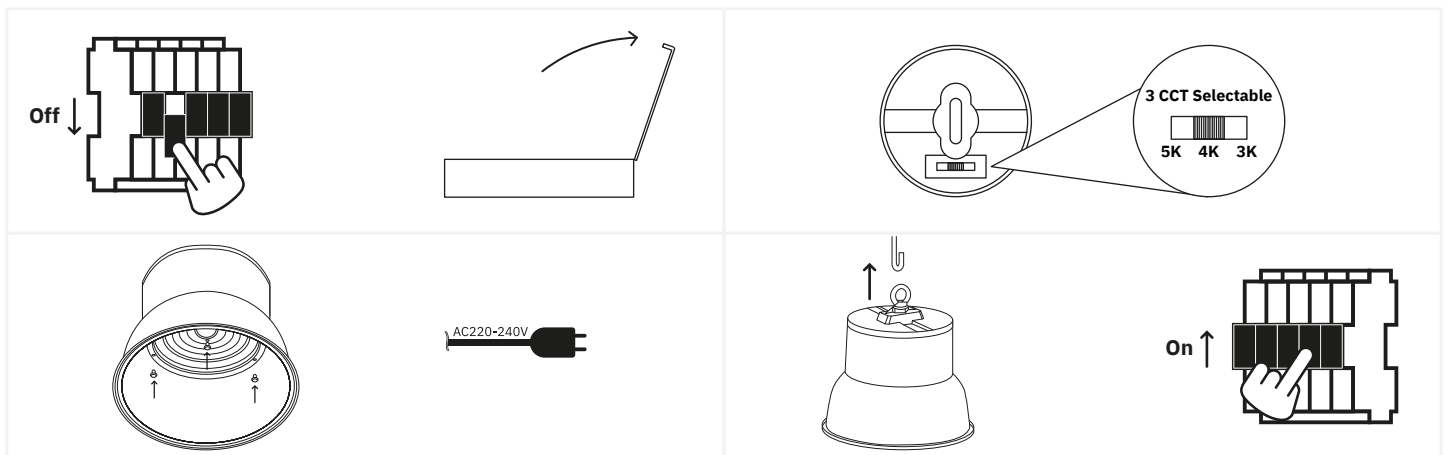
This white high bay features an aluminum housing and polycarbonate shade with a beam angle of up to 120°. Thanks to its white and stylish appearance, this high is suitable not only for the warehouse, storage or workshop, but also for spaces such as shopping malls or exhibition halls.

Features

- 120° polycarbonate shade;
- Tri-white adjustable: 3000K, 4000K, 5000K;
- IP65, IK08;
- Long lifetime of L80 74,000 hours;
- Ideal illumination thanks to wide light distribution.



Installation



1. Turn off the power and remove the product and associated parts from the packaging...;
2. Select the desired color temperature using the switch on top of the lamp;
3. Insert the supplied diffuser into the inside of the lamp and secure it. Then connect the necessary wiring;
4. Hang the high bay and check the complete installation. Should it be in order, the mains power can be reactivated.



Safety

Safety is a top priority at Tronix Lighting. Therefore, we heartily recommend that you follow the following steps closely:

- Keep this manual carefully for future reference;
- Choose a qualified electrician while installing, maintaining or inspecting this product;
- Never look directly into a light source to avoid possible damage to the eye;
- Always ensure that the relevant power group is on non-active when the product is connected;
- Use only recommended combinations (LED drivers, controllers or dimmers) to avoid injury or damage to the product.

Technical problems and repair

Should a product not work properly after installation, or if the product exhibits problems over time, it is advisable to check the following elements:

- Check the wiring and installation of your product;
- Check for the presence of interfering elements such as dust, water or other electronics;
- If possible, try disconnecting the product and testing it in another location to rule out a problem at the location;
- Should you be dealing with a WIFI-based product, check and reset your router's settings.

Should the product still not work after testing, it is recommended to send it in for inspection and/or repair. To do so, please contact Tronix Lighting using nearby details and proof of purchase (packing slip).



CARE



SHARE



CONNECT

Supplier:

Tronix Lighting B.V

Vluchtoord 41
5406 XP Uden, Netherlands

+31 (0)413 330 380
sales@tronixlighting.com

Terms and symbols (as relevant to product)



The **CE mark** indicates that this product complies with EU regulations on safety, health and environmental protection;



The **WEEE symbol** stands for "Waste Electrical and Electronic Equipment Regulation," a directive on the collection, recycling and recovery of electronic waste;



The **Class I symbol** indicates that this product is protected by means of the additional ground cable. This cable is identified by the yellow/green jacket and is attached to this product.

- This product has an **IP65 rating**. This means the housing is touch-safe, fully protected from dust and spray-proof (12.5 L/min) regardless of angle.