

28 689 970 Product version from 3/13/2017



- rain shower Ø 300 mm
- Rain shower material: metal
- PURE RAIN, max. flow rate 14 l/min (at 3 bar)
- Function from: 10 l/min
- quick clearing
- with anti-scale system

**technical data:**

- rosette Ø 60 mm optional
- 1/2" connection

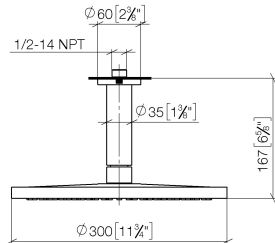
**Notes:**

Recommended miscellaneous

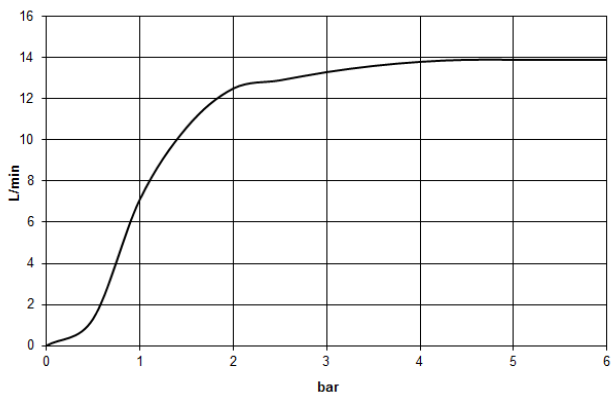
- |   |   |                      |
|---|---|----------------------|
|  | <p><b>Concealed wall elbow -</b><br/>         •min. recess depth 90 mm<br/>         •max. recess depth 163 mm</p> | <p>35 085 970 90</p> |
|---|---|----------------------|

28 689 970 Product version from 3/13/2017

mm [inches]



**Flow rate chart**



**Codes & Standards**

DIN 4109

EN 1112

ISO 3822

Scottish Water  
Byelaws

UK Water Supply  
Regulations

Ü-Zeichen



## Rainshower with ceiling fixing 300 mm - Matte Black

SERIES SPECIFIC

28 689 970 Product version from 3/13/2017

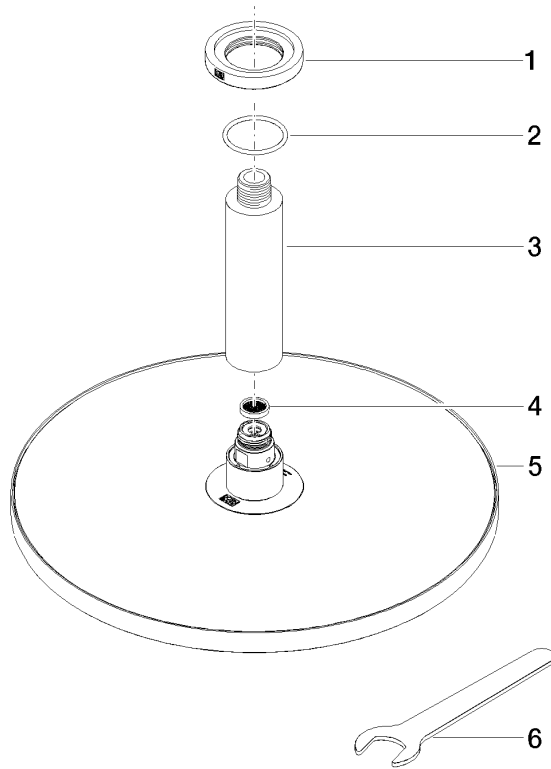
### Certificates and sustainability

LGA\_29

LGA\_29

DVGW\_DW-  
6517DN0

WRAS\_2212



Spare parts list

| No. | Item Number        | Name                                     | Quantity used | Delivery time |
|-----|--------------------|--|---------------|---------------|
| 5   | 04 12 05 091 00-33 | Rainshower round Ø 300 mm - Matte Black  | 1.00          | 40            |
| 3   | 09 11 03 080-33    | Connection Ø 35 x 135 mm - Matte Black   | 1.00          | 40            |
| 6   | 90 30 09 069 00 90 | Spanner -                                | 1.00          | 14            |
| 2   | 09 14 10 141 90    | O-Ring NBR 70 34,59 x 2,62 mm -          | 1.00          | 14            |
| 4   | 09 23 01 075 90    | Sieve seal Ø 18 x 3,5 mm -               | 1.00          | 14            |
| 1   | 09 27 22 040-33    | Rosette Ø 60 x Ø 35 x 9 mm - Matte Black | 1.00          | 40            |