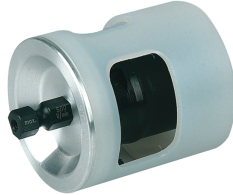


KS63: Kalispeed for electric drills (max. 500 rpm, clockwise only) Ø63



Commercial information

Steel calibration tool for battery-powered drill (max. 500 revolutions/minute). Turn clockwise for sharp blade. Beware of overheating!

Basic unit dimensions

Height	75 mm
Length	70 mm
Width	75 mm
Net weight	0.926 kg

Certificates

Applications

Potable water, Heating, Cooling, Compressed air, Sprinkler, Sanitary

Solutions

Building installations, Industry, Fire protection, Utility, Shipbuilding

Technical characteristics

Model	Pipe deburrer	Cutting diameter	63 63 Millimetre
Suitable for plastic	✓	Length	70 Millimetre
Suitable for steel	✗	Cutting edge length	63 Millimetre
Suitable for stainless steel	✗		
Suitable for aluminium	✗		
Suitable for copper	✗		
Suitable for brass	✗		