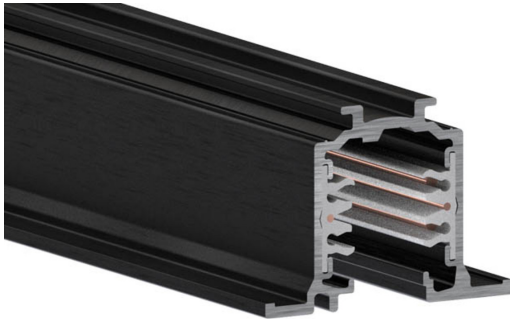


ONETRACK RECESS 2M BLACK CARTON TUBE 9000-2/B-R 9200606



Features

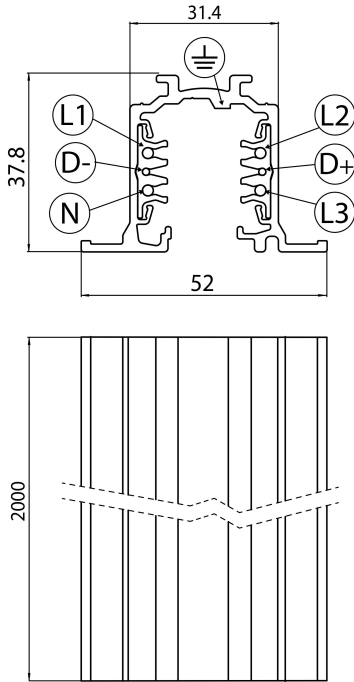
- OneTrack Recessed - 3 circuit track + 2 circuit control L1/L2/L3/Neutral/ground 16A/440V + D+/D- 2x1A/50V FELV AC, DALI, DMX, 1-10V etc. compatible, circuits can be controlled individually, aluminum body, suitable for recessed mounting, 2000 x 30.7 x 37.8 mm (L x W x H), black (RAL 9005). Singular carton tube packaging.

Product Overview

Product name	ONETRACK RECESS 2M BLACK CARTON TUBE 9000-2/B-R
Technology	Accessory
Housing	Aluminium
General application	Museums & Galleries, Office
ETIM Class	EC000101
Housing colour	Black
Warranty	5 years

ONETRACK RECESS 2M BLACK CARTON TUBE 9000-2/B-R 9200606

Technical drawings



Data table

GENERAL DATA

Product name	ONETRACK RECESS 2M BLACK CARTON TUBE 9000-2/B-R
Technology	Accessory
Housing	Aluminium
General application	Museums & Galleries, Office
ETIM Class	EC000101
Warranty	5 years

ELECTRICAL DATA

Control gear required	No
------------------------------	----

ONETRACK RECESS 2M BLACK CARTON TUBE 9000-2/B-R 9200606

PHYSICAL DATA

Housing colour	Black
Nominal Product Length (mm)	2000
Nominal Product Width (mm)	52
Nominal Product Height (mm)	37.8
Weight (kg)	2.27

PACKAGING

Single packaging type	Mix(80% carton, 20% plastic)
Packaging single length / height (cm)	206.0
Packaging single width (cm)	6.2
Packaging single depth (cm)	6.2
Units per outer package	1
Packaging outer length / height (cm)	206.0
Packaging outer width (cm)	5.4
Packaging outer depth (cm)	5.4

SAFETY DATA

Special purpose lamp	No
Dry applications use only	No
Suitable for household illumination	No