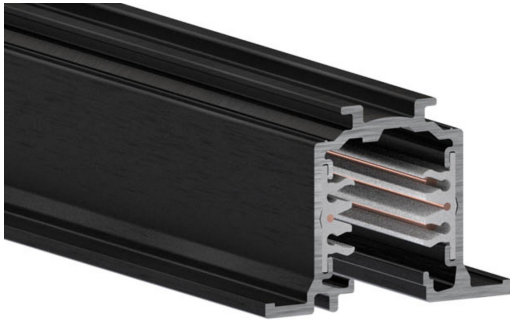


## ONETRACK RECESS 1M BLACK CARTON TUBE 9000-1/B-R 9200605



### Features

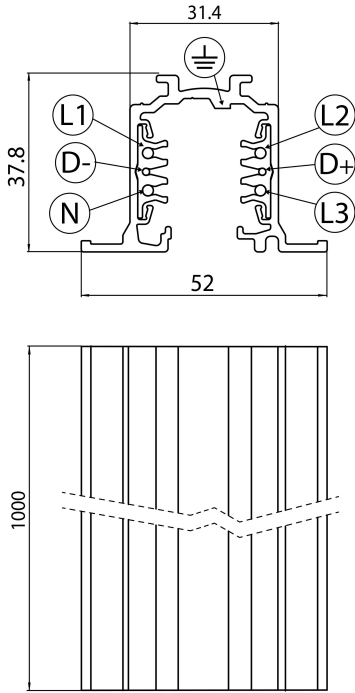
- OneTrack Recessed - 3 circuit track + 2 circuit control L1/L2/L3/Neutral/ground 16A/440V + D+/D- 2x1A/50V FELV AC, DALI, DMX, 1-10V etc. compatible, circuits can be controlled individually, aluminum body, suitable for recessed mounting, 1000 x 30.7 x 37.8 mm (L x W x H), black (RAL 9005). Singular carton tube packaging.

### Product Overview

Product name	ONETRACK RECESS 1M BLACK CARTON TUBE 9000-1/B-R
Technology	Accessory
Housing	Aluminium
General application	Museums & Galleries, Office
ETIM Class	EC000101
Housing colour	Black
Warranty	5 years

## ONETRACK RECESS 1M BLACK CARTON TUBE 9000-1/B-R 9200605

### Technical drawings



### Data table

#### GENERAL DATA

Product name	ONETRACK RECESS 1M BLACK CARTON TUBE 9000-1/B-R
Technology	Accessory
Housing	Aluminium
General application	Museums & Galleries, Office
ETIM Class	EC000101
Warranty	5 years

#### ELECTRICAL DATA

Control gear required	No
-----------------------	----

## ONETRACK RECESS 1M BLACK CARTON TUBE 9000-1/B-R 9200605

### PHYSICAL DATA

Housing colour	Black
Nominal Product Length (mm)	1000
Nominal Product Width (mm)	52
Nominal Product Height (mm)	37.8
Weight (kg)	1.14

### PACKAGING

Single packaging type	Mix(80% carton, 20% plastic)
Packaging single length / height (cm)	106.0
Packaging single width (cm)	6.2
Packaging single depth (cm)	6.2
Units per outer package	1
Packaging outer length / height (cm)	106.0
Packaging outer width (cm)	5.4
Packaging outer depth (cm)	5.4

### SAFETY DATA

Special purpose lamp	No
Dry applications use only	No
Suitable for household illumination	No