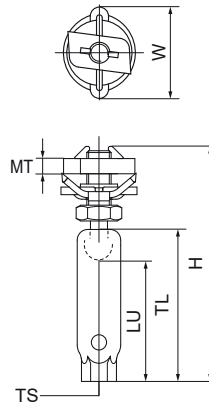


## Walraven RapidRail® Ball Swivel Hanger

(G3060)

fixing to Walraven RapidRail®



### Features & benefits

- slide nut with ball swivel hanger, washer and Walraven RapidRail® spring
- recommended to accommodate pipe expansions for metal pipes up to DN 50, plastic pipes up to DN 100
- suitable for rails 27x18, 30x15, 30x20, 30x30, 30x45
- ready-to-use pre-assembled for a quick fixing, and retains assembly in place before final tightening
- with inspection hole to check screw-in depth (attention: when the threaded rod is screwed-in too deep, the ball swivel is blocked)
- screw-in depth is continuously variable (see LU)
- material: metal parts made of steel 1.0332; spring(s) made of POM (polyoxymethylene), green zinc plated
- For detailed technical information about our RAL marked products, please see the RAL datasheet in our web catalogue
- Please note. Always use 2 ball swivel hangers and secure by additional hexagon nut (see application picture)
- The maximum length change that can be dealt with, depends on the fixing distance (ceiling - pipe) The height difference that occurs as a result, needs to be taken into consideration.
- To be used in combination with Walraven Ball Swivel Hangers.

Product Number	VVS Number	For Rail Type	Thread Size	Thread Length	Usable Length	Material Thickness	Maximum Allowed Load Fax	Maximum Allowed Load Faz	Total Height	Total Width	Total Depth
Reference letter			TS	TL	LU	MT	Fa,x	Fa,z	H	W	DtT
Unit description				mm	mm	mm	N	N	mm	mm	mm
6520100	018066618	27x18, 30x15, 30x20, 30x30, 38x40	M8	15	12.5	5.00	182	2,000	49	29	29
6520110	018066620	27x18, 30x15, 30x20, 30x30, 38x40	M10	15	9.5	5.00	226	2,000	49	29	29
6520200	018050215	27x18, 30x15, 30x20, 30x30, 38x40	M8	37.5	32	5.00	182	2,000	74	29	29
6520210	018050255	27x18, 30x15, 30x20, 30x30, 38x40	M10	37.5	32	5.00	226	2,000	74	29	29