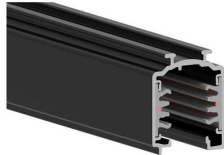


ONETRACK 2M BLACK 9000A-2/B-ST 9200506



Features

- Onetrack - 3 circuit track + 2 circuit control L1/L2/L3/Neutral/ground 16A/440V + D+/D- 2x1A/50V FELV AC, DALI, DMX, 1-10V etc. compatible, circuits can be controlled individually, aluminum body, suitable for surface and suspended mounting, 2000 x 30.7 x 37.8 mm (L x W x H), black (RAL 9005).

Product Overview

| | |
|---------------------|--------------------------------|
| Product name | ONETRACK 2M BLACK 9000A-2/B-ST |
| Technology | Accessory |
| Housing | Aluminium |
| General application | Museums & Galleries, Office |
| ETIM Class | EC000101 |
| Housing colour | Black |
| Warranty | 5 years |

Technical drawings

