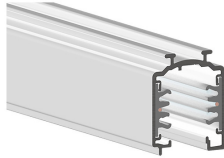


## ONETRACK 1M WHITE 9000A-1/W-ST 9200501



### Features

- Onetrack - 3 circuit track + 2 circuit control L1/L2/L3/Neutral/ground 16A/440V + D+/D- 2x1A/50V FELV AC, DALI, DMX, 1-10V etc. compatible, circuits can be controlled individually, aluminum body, suitable for surface and suspended mounting, 1000 x 30.7 x 37.8 mm (L x W x H), white (RAL 9010).

### Product Overview

Product name	ONETRACK 1M WHITE 9000A-1/W-ST
Technology	Accessory
Housing	Aluminium
General application	Museums & Galleries, Office
ETIM Class	EC000101
Housing colour	White
Warranty	5 years

### Technical drawings

