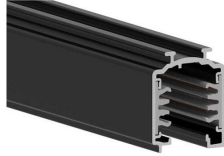


## ONETRACK 3PHASE 2M BLACK 9000B-2/B-ST 9200306



### Features

- Onetrack 3-phase - 3 circuit track L1/L2/L3/ Neutral/ground 16A/440V, circuits can be controlled individually, aluminum body, suitable for surface and suspended mounting, 2000 x 30.7 x 37.8 mm (L x W x H), black (RAL 9005).

### Product Overview

Product name	ONETRACK 3PHASE 2M BLACK 9000B-2/B-ST
Technology	Accessory
Housing	Aluminium
General application	Museums & Galleries, Office
ETIM Class	EC000101
Housing colour	Black
Warranty	5 years

### Technical drawings

