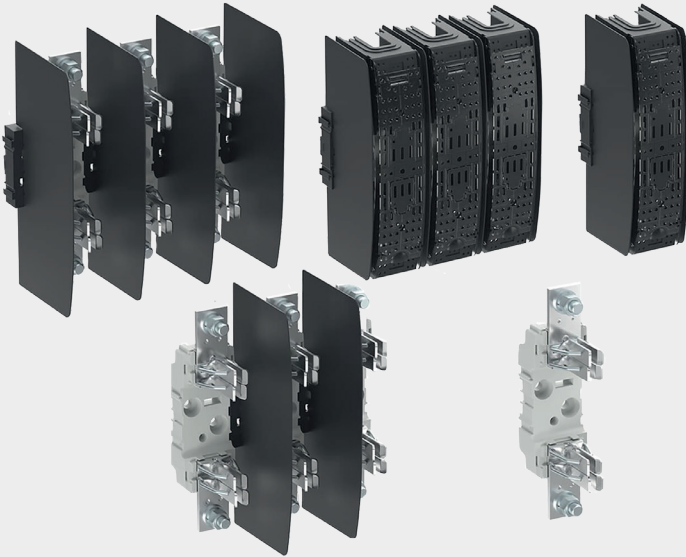


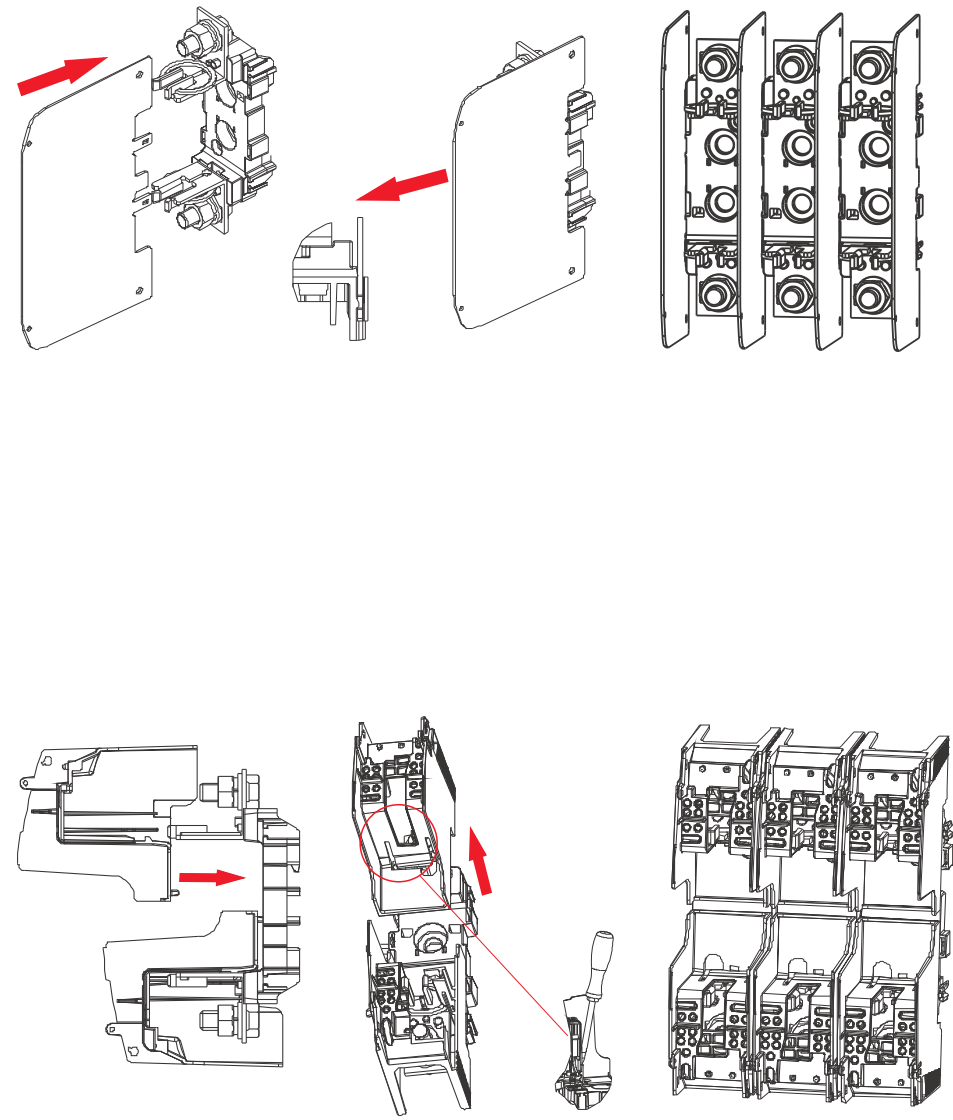
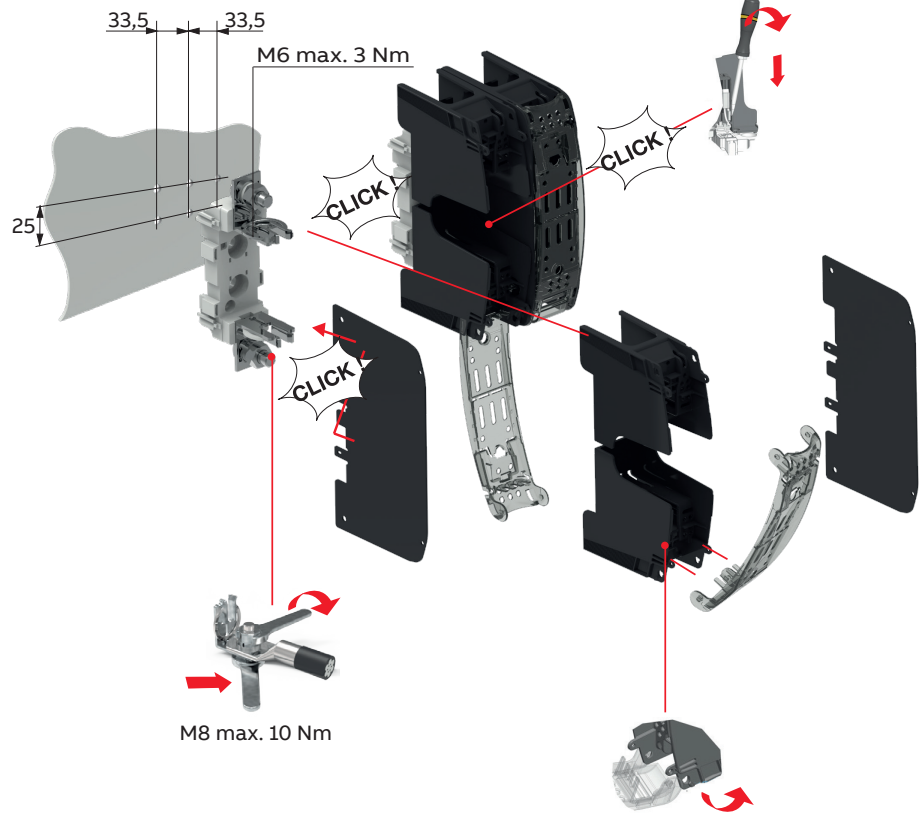
—
INSTALLATION INSTRUCTION

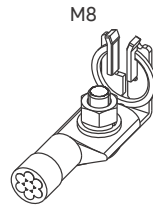
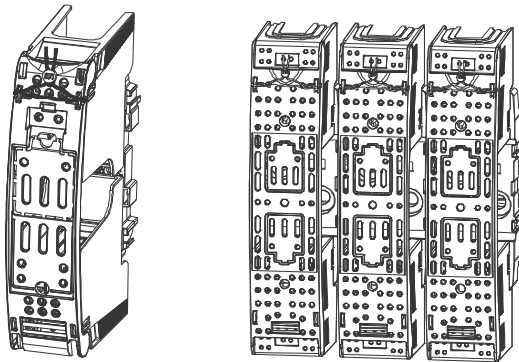
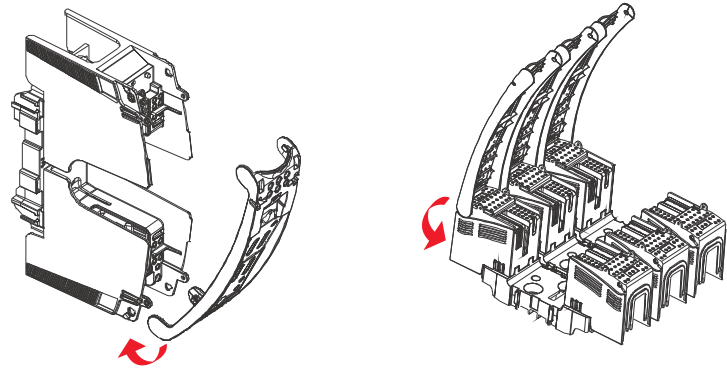
Fuse base

OFAZ00_

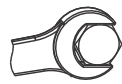


Installation





max. 10 Nm

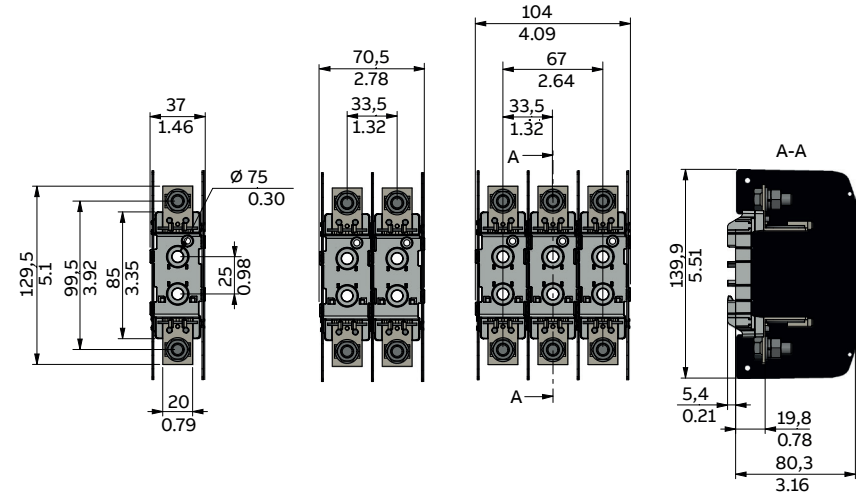


OFAZ00_

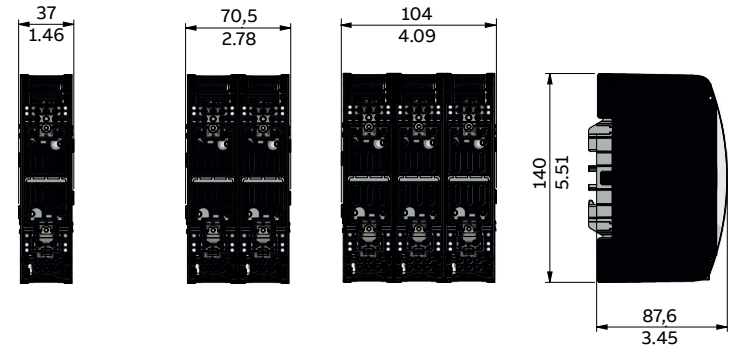
Dimension drawings

mm
in

OFAZ00P_



OFAZ00S_





Contact us

ABB Oy

Muottitie 2A 65320

Vaasa, Finland

abb.com/lowvoltage