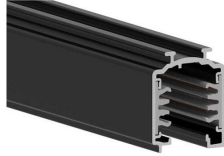


ONETRACK 3PHASE 1M BLACK 9000B-1/B-ST 9200305



Features

- Onetrack 3-phase - 3 circuit track L1/L2/L3/ Neutral/ground 16A/440V, circuits can be controlled individually, aluminum body, suitable for surface and suspended mounting, 1000 x 30.7 x 37.8 mm (L x W x H), black (RAL 9005).

Product Overview

Product name	ONETRACK 3PHASE 1M BLACK 9000B-1/B-ST
Technology	Accessory
Housing	Aluminium
General application	Museums & Galleries, Office
ETIM Class	EC000101
Housing colour	Black
Warranty	5 years

Technical drawings

