

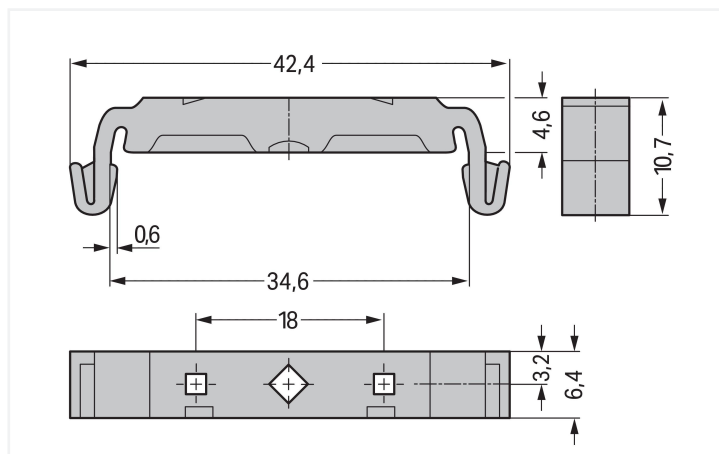
## Data Sheet | Item Number: 209-120

Mounting foot; can be snapped on terminal blocks with snap-in mounting foot; for mounting on relay-modules; 6.4 mm wide; gray

<https://www.wago.com/209-120>



Color: ■ gray



Dimensions in mm

### Technical data

Mounting type	DIN-35 rail
---------------	-------------

### Physical data

Width	6.4 mm / 0.252 inches
Height	42.3 mm / 1.665 inches
Depth	10.8 mm / 0.425 inches
Depth from upper-edge of DIN-rail	4.8 mm / 0.188 inches

### Mechanical data

Suitable	for male and female connectors with snap-in mounting feet (for panel mounting)
----------	--

### Material data


Color	gray
Material group	I
Insulation material	Polyamide (PA66)
Flammability class per UL94	V0
Fire load	0.036 MJ
Weight	1.2 g

### Commercial data



Product Group	2 (Terminal Block Accessories)
eCl@ss 10.0	27-14-11-92
eCl@ss 9.0	27-14-11-92
ETIM 8.0	EC002848
ETIM 7.0	EC002848
PU (SPU)	500 (25) pcs
Packaging type	Box
Country of origin	CH
GTIN	4017332272421
Customs tariff number	39269097900

Environmental Product Compliance	
RoHS Compliance Status	Compliant,No Exemption





Downloads

Environmental Product Compliance	
Compliance Search	
Environmental Product Compliance 209-120	

Documentation

Bid Text			
209-120	19.02.2019	xml 2.53 KB	
209-120	18.08.2017	doc 22.50 KB	

CAD/CAE-Data

CAD data		CAE data	
2D/3D Models 209-120		EPLAN Data Portal 209-120	
		WSCAD Universe 209-120	
		ZUKEN Portal 209-120	

1 Compatible Products

1.1 Optional Accessories

1.1.1 Installation

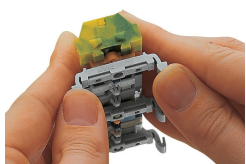
1.1.1.1 Mounting accessories



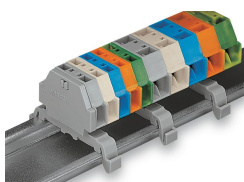
Item No.: 209-119

Fixing screw; for 209-120 mounting carrier

## Installation Notes



Terminal strip with snap-in mounting feet  
Snapping a mounting foot (209-120).  
(Distance between mounting feet: approx.  
25 ... 30 mm)



Terminal strip; with snap-in mounting feet;  
for DIN-35 rail