



New

1000 V d.c. FWE High speed fuses specifically designed for EV Charging stations

Eaton's Bussmann series 1000 V d.c. FWE High speed fuses, specifically designed for EV Charging stations, now available in multiple fuse body sizes.



1000 V d.c fuse body sizes

- Cylindrical 10 x 38 mm
- Cylindrical 14 x 51 mm
- North American round body fuse

Technical data

- Rated voltage 1000 V d.c. (IEC/UL)
- Rated current up to 600 A
- 100 kA breaking capacity tested
- 10 ms time constant tested (suitable for most DC applications)
- Operating class: Ultra rapid characteristics available as partial and full range operating class

Standards

- CE
- IEC 60269-4
- UL 248-13 recognised

Features and benefits

- Eaton's Bussmann® series High-speed fuse links have leading DC performance making them the ideal choice for the protection of high-power DC Charging station applications.
- Wide range of solutions available for the protection of DC conditioning circuits and high Voltage DC/DC Converters for up to 400kW+ rated chargers.
- Supports the full range of charger output ratings up to 1000VDC defined by CCS & CHAdeMO Protocols
- Compact, space saving design coupled with a low minimum breaking current which offers easy coordination within DC applications and reduces dimensioning requirements of DC contactors to optimize space and decrease overall cost of system
- Demonstrated performance in extreme temperature cycling conditions ensure your installation will be protected by the best possible and most suitable electrical circuit protection solutions.

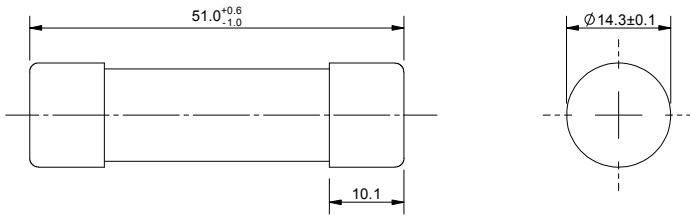
Typical applications

- DC Charging stations:
 - Private & Public charging stations
 - Slow (low power) and fast (high power)
- Specialist vehicle onboard applications
- General DC power conversion equipment and battery systems

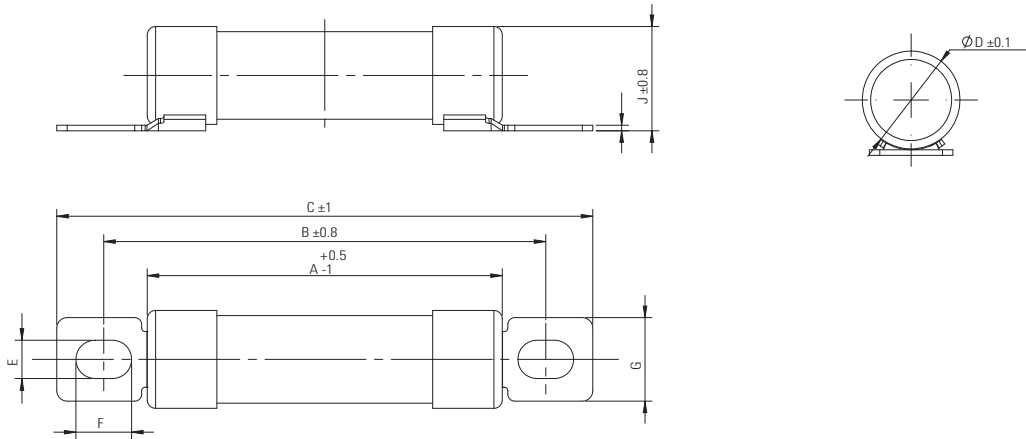
EATON

Powering Business Worldwide

Dimensions (mm) - 14 x 51 mm fuse links - ferrule

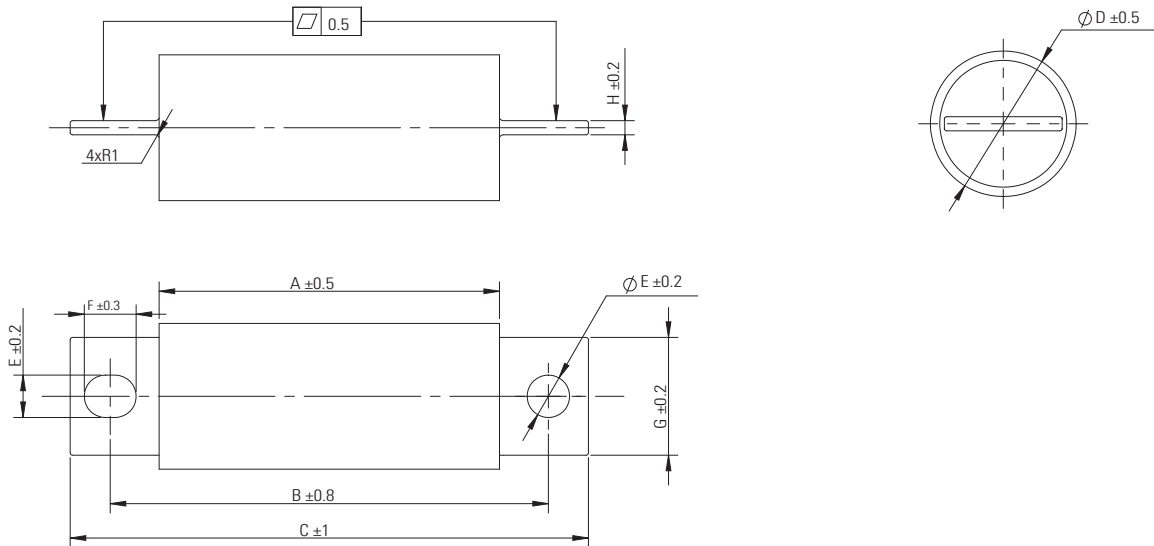


Dimensions (mm) - 14 x 51 mm fuse links - bolted tags



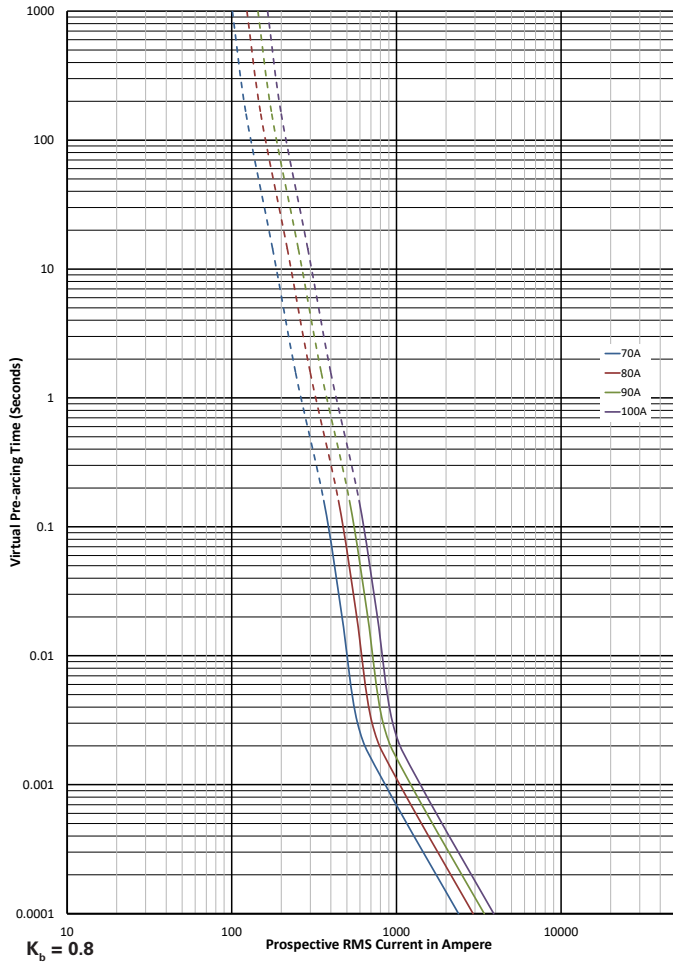
Rated current	A	B	C	D	E	F	G	H	J
35 A to 50 A	51	63.5	77	14.3	5.5	8	12	0.8	15.1

Dimensions (mm) - North American round body fuse links

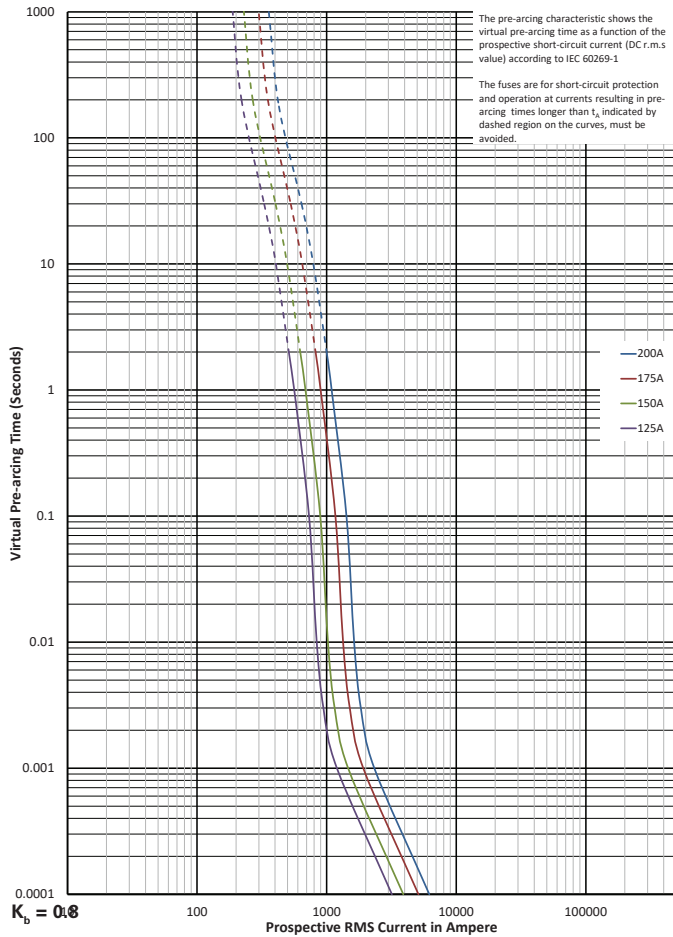


Catalogue number	A	B	C	D	E	F	G	H
FWE-70A to FWE-100A	72.2	93	110	25.4	9	11	19	2.2
FWE-125A to FWE-200A	72.2	93	110	31	9	11	25	3
FWE-225A to FWE-300A	72.2	100	122	38.1	11	13	28	3.5
FWE-350A to FWE-400A	72.2	100	122	50.8	11	13	28	5
FWE-450A to FWE-600A	72.2	100	122	63.5	11	13	40	6

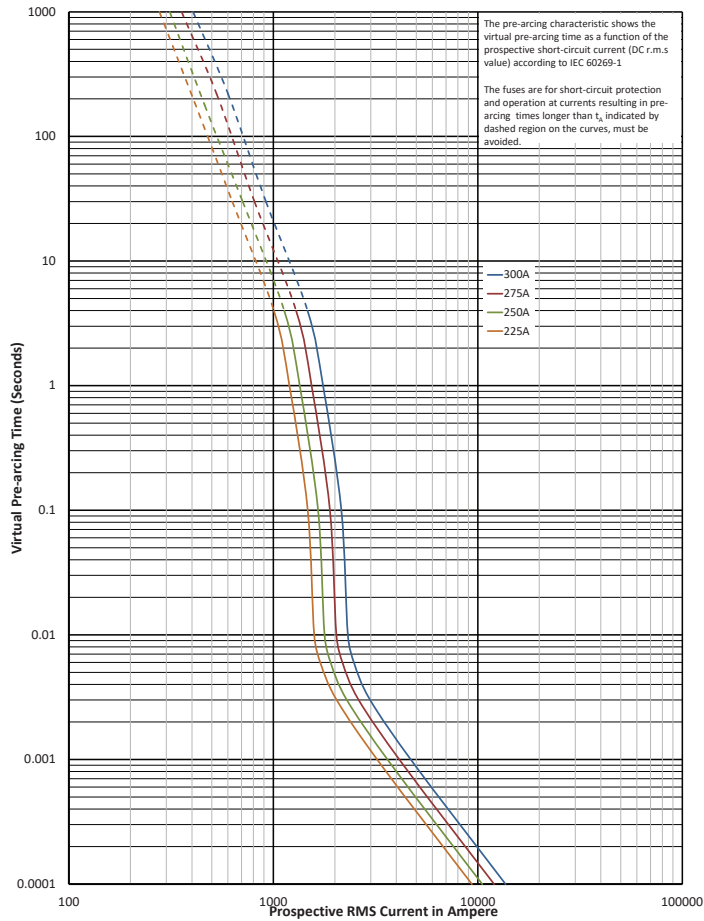
Time current curve - 70 A to 100 A



Time current curve - 125 A to 200 A

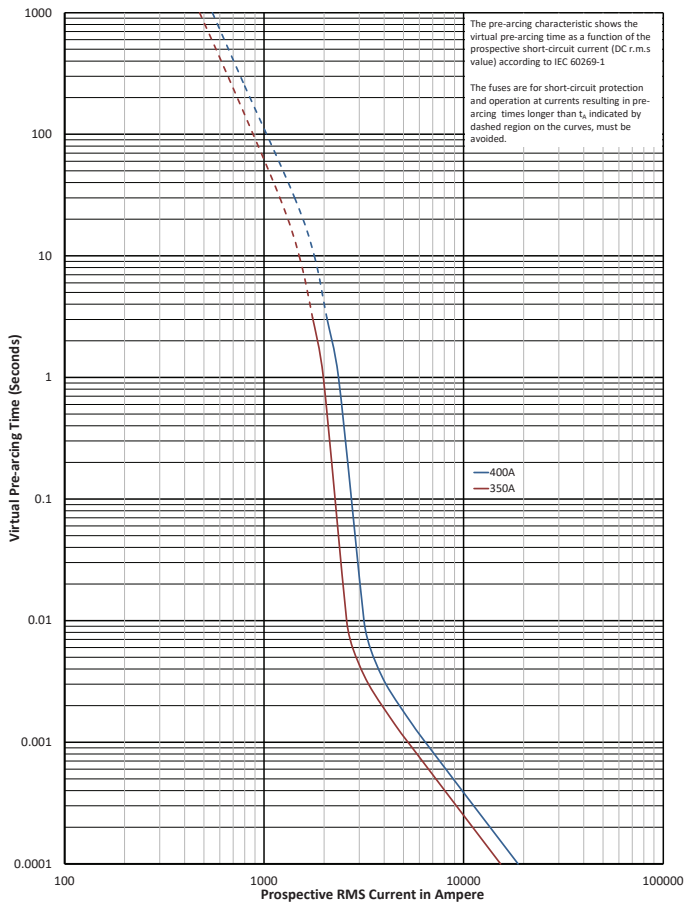


Time current curve - 225 A to 300 A



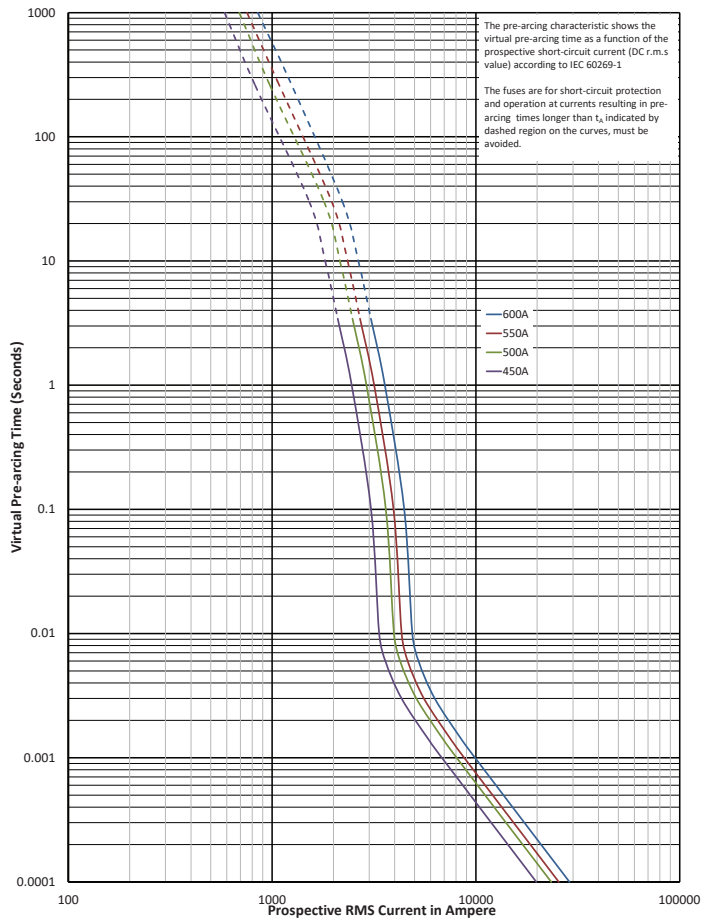
$K_b = 0.8$

Time current curve - 350 A and 400 A



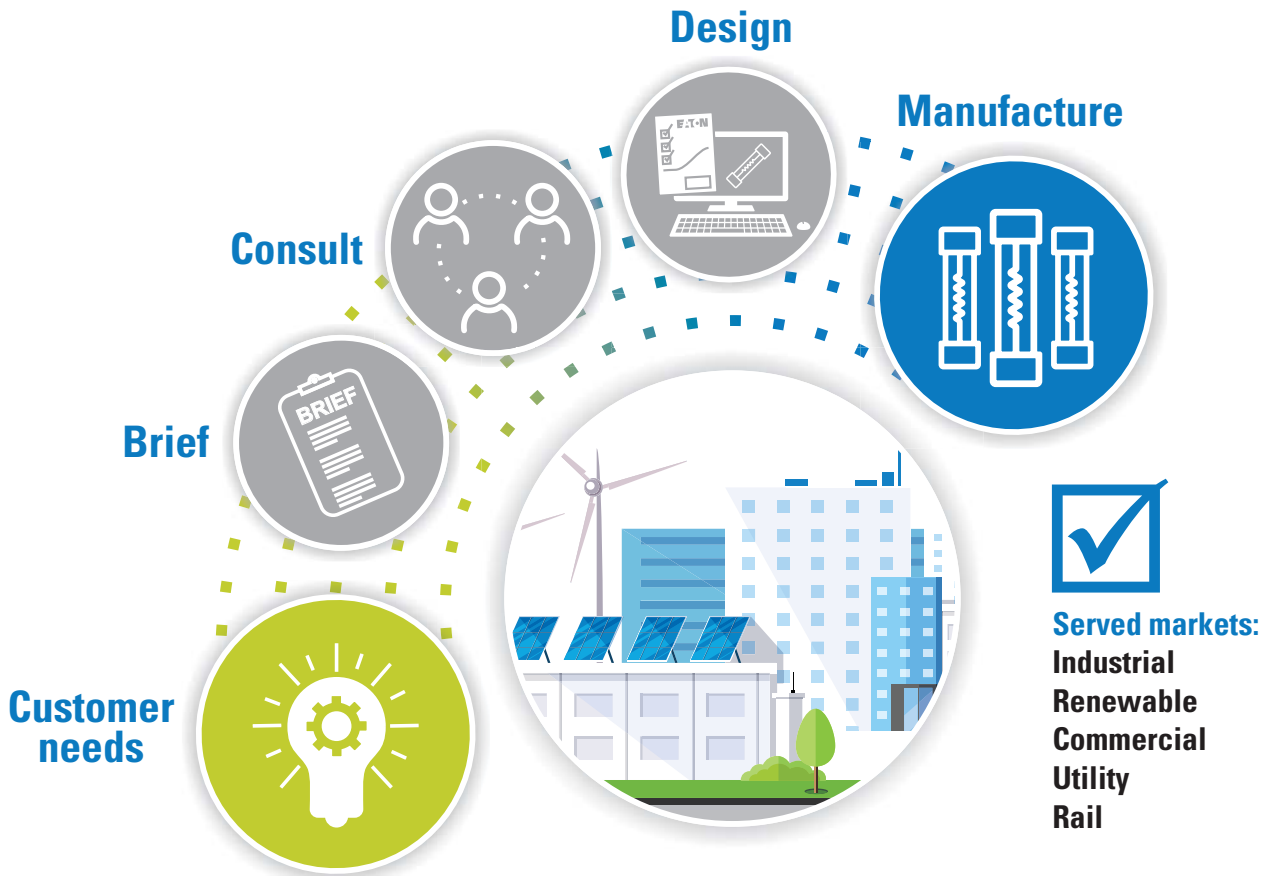
$K_b = 0.8$

Time current curve - 450 A to 600 A



$K_D = 0.8$

Customised fuse design service



Eaton's Field Applications Engineers are able to draw upon more than 100 years of fuse design knowledge to fully meet your application needs and ensure you can rely on the best in class electrical circuit protection solutions.

As the trend towards clean energy continues to drive new technologies in renewable energy generation, energy storage, electrical transportation and the adoption of DC technology throughout wider industries, the demand for customised fusing products has only increased.

Our Application and Design Engineers located at R&D centres in North America, Europe and Asia can leverage over 100 years of fuse design and application experience along with our in-house test labs to meet any customised solution requests for **Eaton's Bussmann series fuses**.

Our services include:

- New current/voltage ratings
- Design to meet I^2t requirements
- Customised mounting connection and plating materials
- Modify indicator locations/ add or remove indicators
- Special end connections
- Acquire UL/IEC/CCC/CSA certificates
- Customised testing such as shock vibration

Contact us today:

For general fuse enquiries: buletechnical@eaton.com

For high speed fuses enquiries : bulehighspeedtechnical@eaton.com

EATON

Powering Business Worldwide

Eaton is an intelligent power management company dedicated to protecting the environment and improving the quality of life for people everywhere. We make products for the data center, utility, industrial, commercial, machine building, residential, aerospace and mobility markets. We are guided by our commitment to do business right, to operate sustainably and to help our customers manage power today and well into the future. By capitalizing on the global growth trends of electrification and digitalization, we're accelerating the planet's transition to renewable energy sources, helping to solve the world's most urgent power management challenges, and building a more sustainable society for people today and generations to come.

Eaton was founded in 1911 and has been listed on the New York Stock Exchange for more than a century. We reported revenues of \$23.2 billion in 2023 and serve customers in more than 160 countries. For more information, visit www.eaton.com. Follow us on [LinkedIn](#)

Contact your local Eaton office

Eaton Electrical Products Limited
Unit 1, Hawker Business Park
Melton Road
Burton-on-the-Wolds
LE12 5TH
Leicestershire
United Kingdom
GBBURsales@eaton.com
www.eaton.com

Eaton Electrical Products Limited
Unit 1, Hawker Business Park,
Melton Road, Burton-on-the-Wolds
Leicestershire, LE12 5TH
United Kingdom

© 2022 Eaton
All Rights Reserved
PDF only
SA135011EN
February 2025

Eaton is a registered trademark.
All other trademarks are property
of their respective owners.

Follow us on social media to get the latest product and support information.

