

Push Compatible WiFi AC Phase Cut Dimmer

70020069

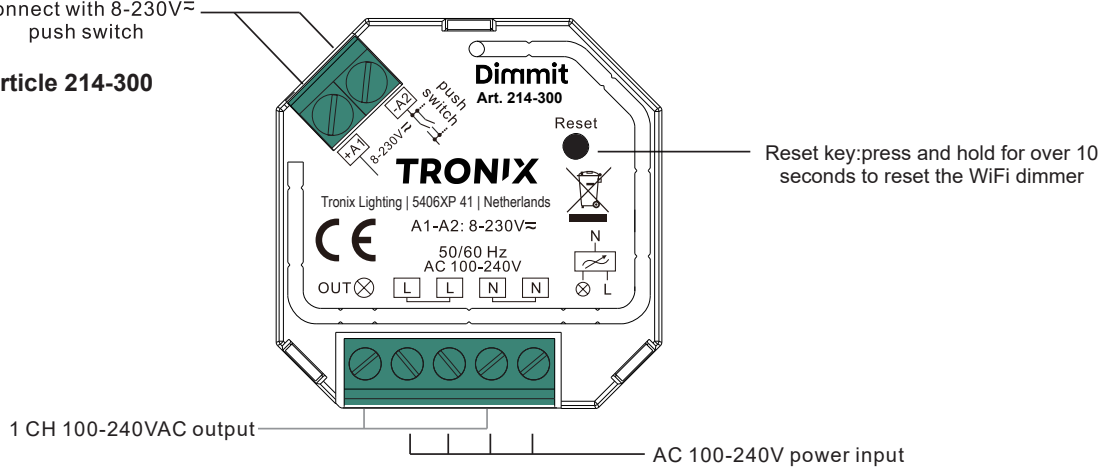


Important: Read All Instructions Prior to Installation

Function introduction

Connect with 8-230V \approx
push switch

Article 214-300



Product Data

Input Voltage	Output Voltage	Output Current	Allowed Inrush Current	Size(LxWxH)
100-240VAC	100-240VAC	1.8A max	Cold Start 75A max.	45.5x45x20.3mm

Compatible Load Types			
Load Symbol	Load Type	Maximum Load	Remarks
	Dimmable LED lamps	200W @ 220V 100W @ 110V	Due to variety of LED lamp designs, maximum number of LED lamps is further dependent on power factor result when connected to dimmer.
	Dimmable LED drivers	200W @ 220V 100W @ 110V	Maximum permitted number of drivers is 200W divided by driver nameplate power rating.
	Incandescent lighting, HV Halogen lamps	400W @ 220V 200W @ 110V	
	Low voltage halogen lighting with electronic transformers	200W @ 220V 100W @ 110V	

- 100-240VAC Wide Input and Output Voltage
- WiFi control through smart phone APP
- 1 Channel Output, Up to 400W
- Input and Output with Screw Terminals,
- Safe and Reliable
- Trailing edge dimming
- Supports resistive loads and capacitive loads
- Single Wire Push Switch Input for Push Dim Function
- Great Compatibility with Universal 8V-230V \approx Input Push Switches
- Works with Amazon Alexa and Google Home
- To dim and switch single color dimmable LED lamps, traditional incandescent and halogen lights
- Mini Size, Easy to be Installed into a standard 86*86mm wall box
- Waterproof grade: IP20

Safety & Warnings

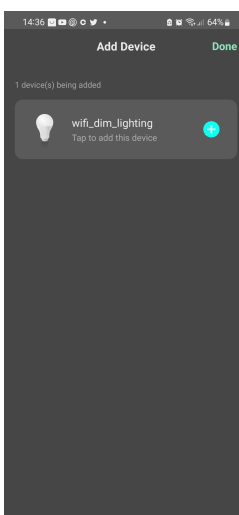
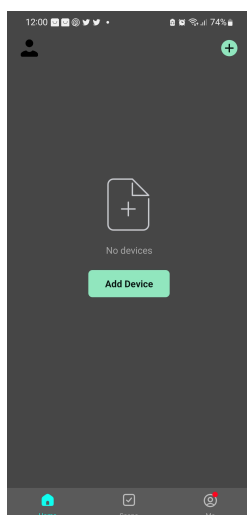
- DO NOT install with power applied to device.
- DO NOT expose the device to moisture.

Operation

1. Do wiring according to wiring diagram.

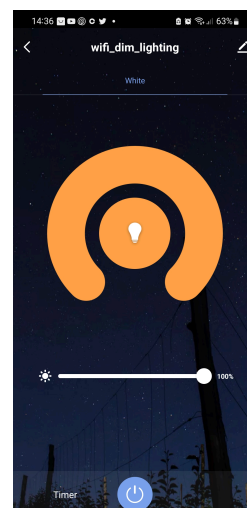
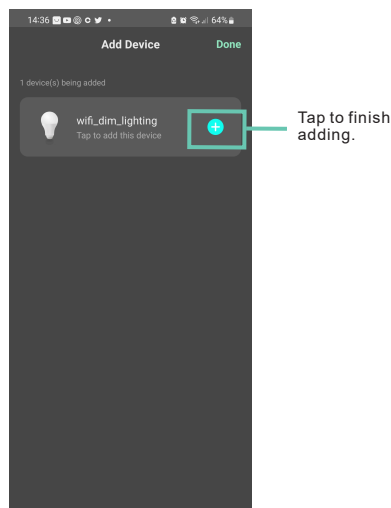
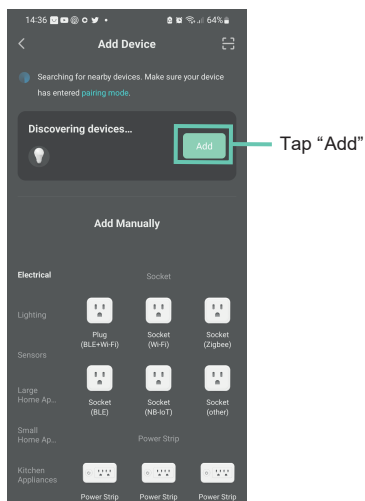
2. Pair the WiFi dimmer to the smart phone or tablet:

Step 1: Download the “Dimmit” APP from APP store or google play, and register an account as instructed, then log in the account.
Please enable bluetooth on your smart phone in advance.



Step 2: Press and hold the “Reset” button for over 10 seconds to reset the WiFi dimmer, then reset power of the dimmer to set it to pairing mode. Then the WiFi dimmer will be discovered by the App automatically.

Step 4: Finish adding and then you can control the WiFi dimmer through the APP.



Wiring diagram

Notes for the diagrams:

L - terminal for live lead

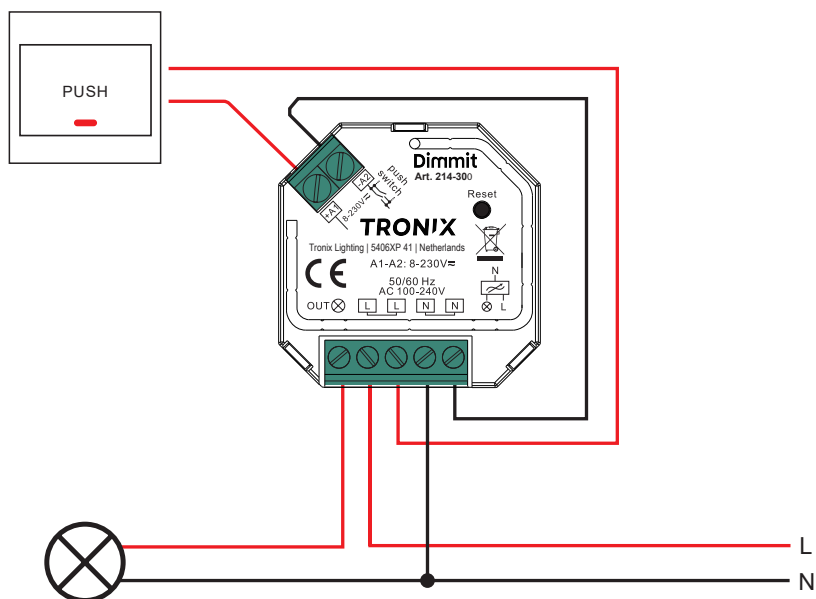
N - terminal for neutral lead

Out - output terminal of the dimmer (controlling connected light source)

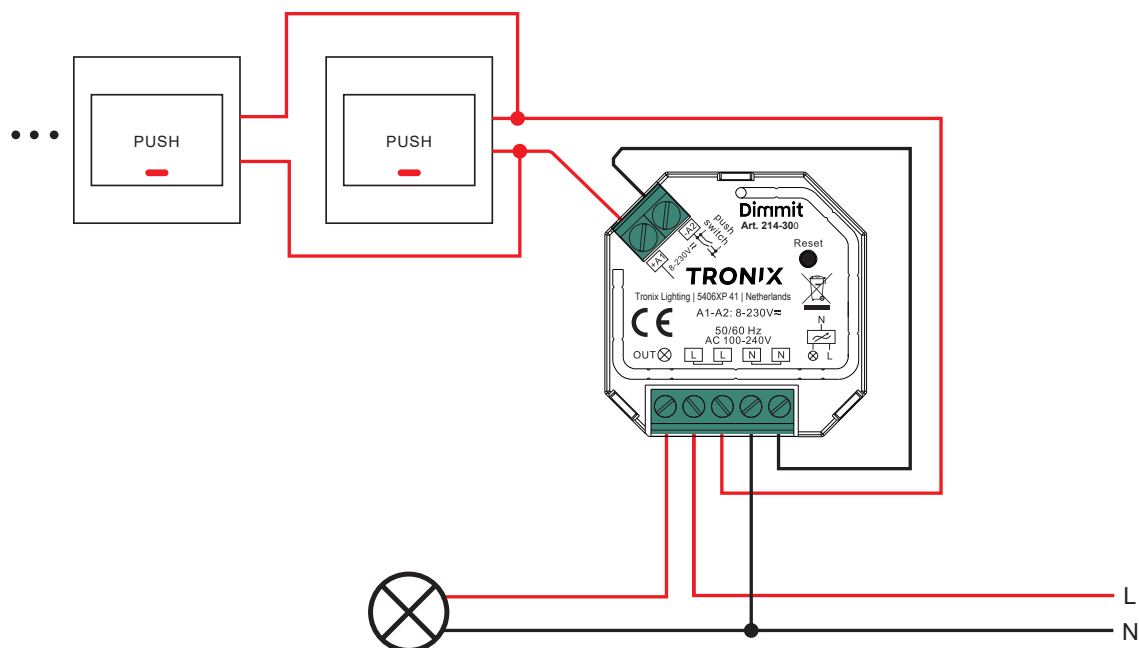
+A1 - terminal for push switch

-A2 - terminal for grounding to the switch connected to the dimmer

1) With Single Push Switch



2) With Multiple Push Switches for Multiple Control Points



Note:

- 1) The max. allowed inrush current of this dimmer is cold start 75A, when connecting LED drivers or LED luminaries in parallel, please make sure that the total inrush current of the parallel connected drivers or luminaries do not exceed the max. allowed inrush current of this dimmer.
- 2) The recommended number of parallel connected drivers or luminaries shall not be more than 10, otherwise

the dimmer may be damaged due to the high inrush current at the moment of starting.

This phase dimmer adopts trailing edge dimming (reverse phase control), please make sure the connected loads support reverse phase control. Please refer to the user manual of the load or consult the supplier of the load.

PUSH DIM:

While connected with PUSH switch, click the button to switch ON/OFF lights. Press and hold down the button to increase/decrease light intensity.

Product Dimension

