

CYLON® TECHNICAL BULLETIN NO. 550

Issue Date: 30 June 2025

CXpro^{HD} v1.07.06

Summary

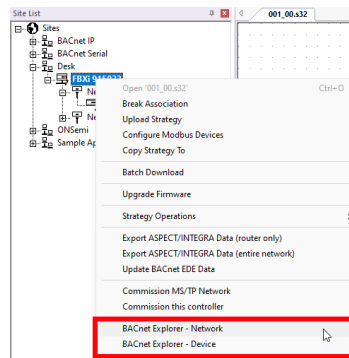
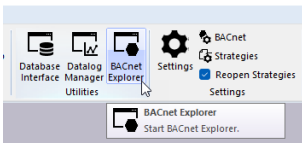
This update includes a new integrated BACnet explorer that replaces NBpro.

Features

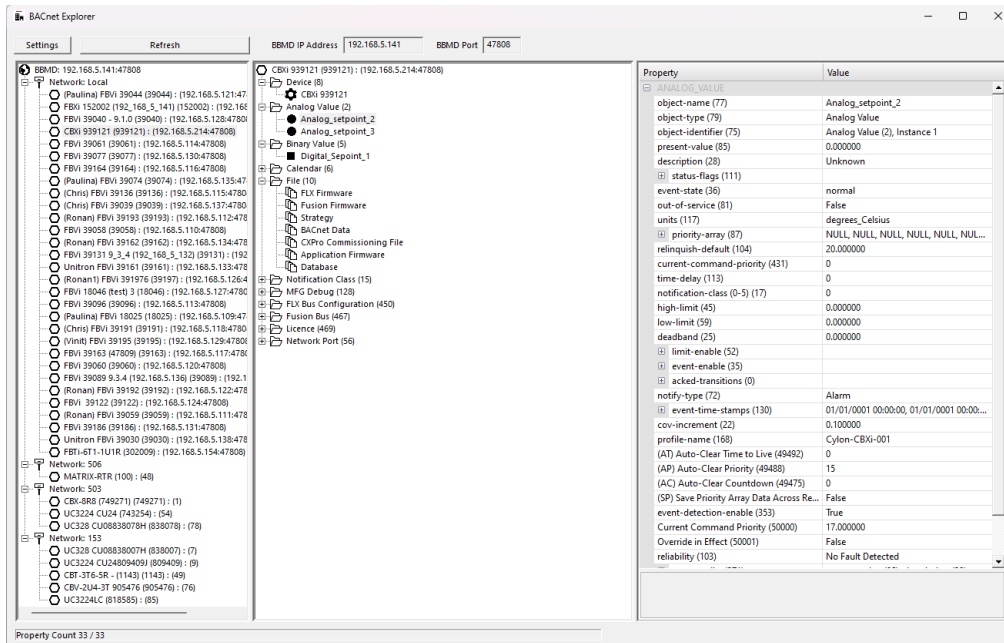
INTEGRATED BACNET EXPLORER

The integrated BACnet Explorer allows users to discover BACnet devices on their network, explore BACnet Objects, and view and edit the BACnet Properties of each one. It can be used to discover a full network of BACnet Devices or a single BACnet Device.

The BACnet Explorer can be launched from a button in the Ribbon Bar or from the Site Tree context menu.



This will launch the BACnet Explorer window and begin discovering the BACnet Devices on the network, based on the BBMD settings.



The BBMD IP Address and Port used are displayed at the top of the BACnet Explorer window.

The discovered BACnet Devices are displayed on the left side of the window.

The user can select one of the BACnet Devices to read all BACnet Objects of that device. These are displayed in the center of the window and are organized by Object type.

The user can select one of the BACnet Objects to read all BACnet Properties of that object. These are displayed on the right side of the window. The BACnet Property values can be edited here.

BACNET EXPLORER BBMD SETTINGS

The source of the BBMD Settings used by the BACnet Explorer depends on how the BACnet Explorer is launched:

- If launched from the Ribbon Bar or the root node of the Site List, it will use the **System Level BBMD Settings**
- If launched from a Site Node of the Site List, it will use the **Site Level BBMD Settings**. If BBMD is not enabled at the Site level, it will attempt to use the System Level BBMD Settings.
- If launched from a Router Node or a Device Node of the Site List, it will use the **Router Level BBMD Settings**. If BBMD is not enabled at the Router level, it will attempt to use the Site Level BBMD Settings or Site Level BBMD Settings.

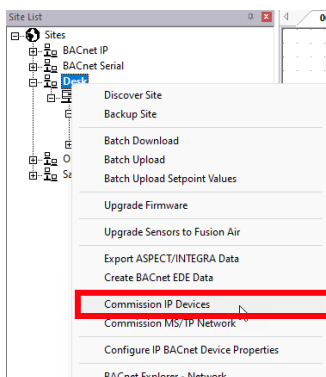
MASS COMMISSIONING IMPROVEMENTS

It is now possible to

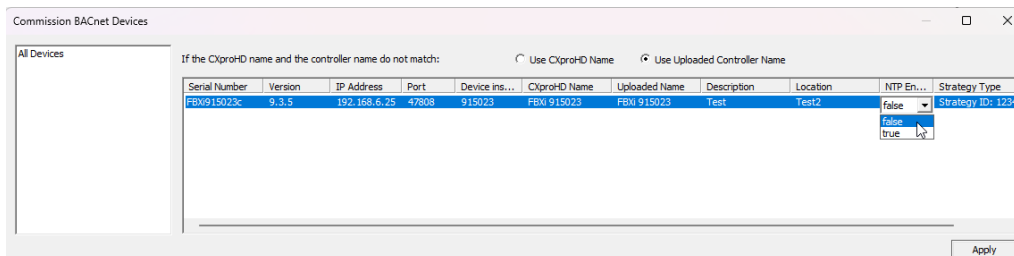
- enable or disable NTP Time Synchronization on IP Controllers as part of the Commission IP Devices functionality.
- configure the RS-485 Ports for IP Controllers as part of the Configure IP BACnet Device Properties functionality.
- change the MS/TP Address of MS/TP devices as part of the Commission MS/TP Network functionality.
- change the Baud Rate of MS/TP devices as part of the Commission MS/TP Network functionality.
- update the local setpoint values for all controllers on a site with the values uploaded from the controllers in a single batch operation.

NTP TIME SYNC ENABLE/DISABLE

To enable or disable NTP Time Synchronization on an IP Controller, right-click on the controller in the Site Tree, and select Commission IP Devices from the context menu:

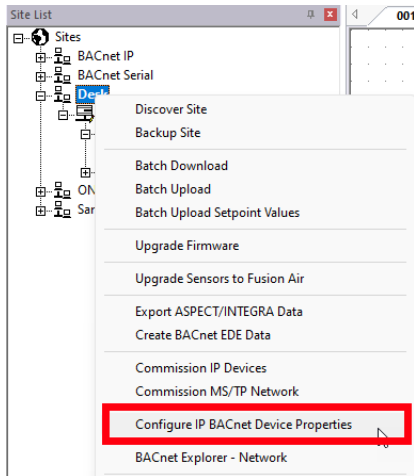


In the Commission BACnet Devices dialog, set NTP Enable to true or false as required.

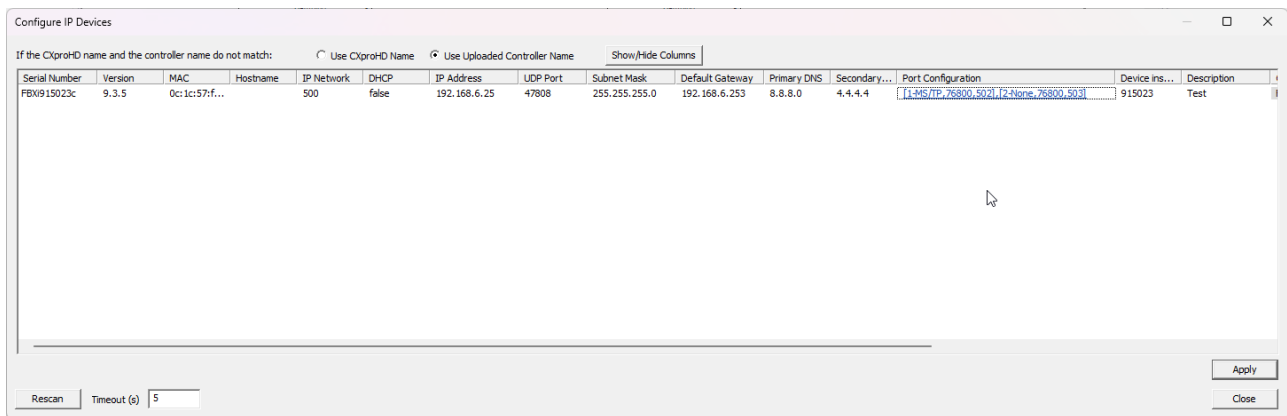


PORT STATUS CHANGE

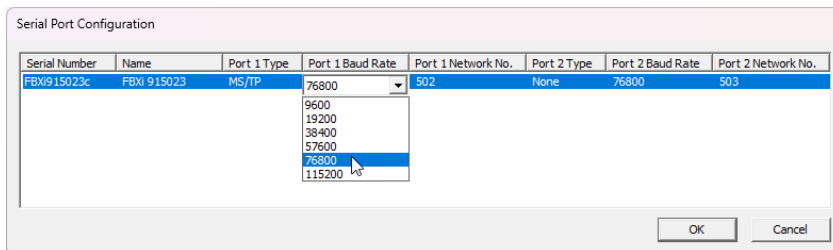
To configure the RS-485 Ports on an IP Controller, right-click on the controller in the **Site Tree**, and select **Configure IP BACnet Device Properties** from the context menu:



This will open the **Configure IP devices** dialog, where the current port status is displayed in the **Port Configuration** column.

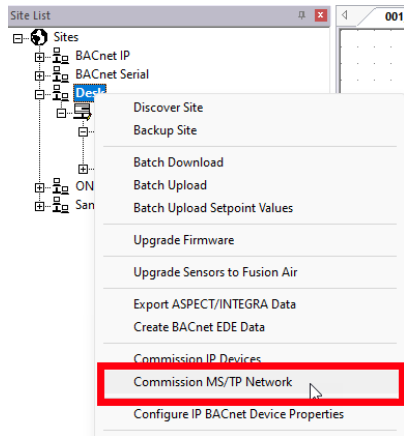


Clicking on the **Port Configuration** column will open a dialog allowing the **Port Type**, **Baud Rate**, and **Network Number** to be configured for all IP Devices.



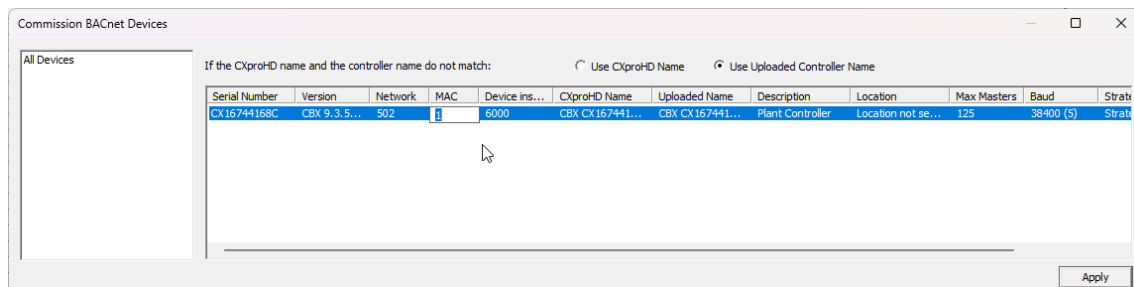
MS/TP ADDRESS CHANGE

To change the MS/TP Address of an MS/TP device, right-click on the device in the **Site Tree**, and select **Commission MS/TP Network** from the context menu:



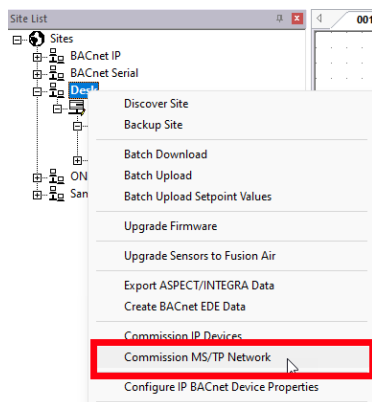
This will open the **Commission BACnet devices** dialog.

Enter the MS/TP Address in the **MAC** column.



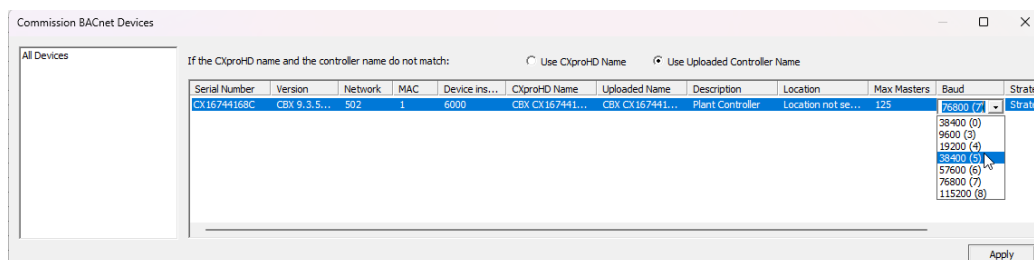
BAUD RATE CHANGE

To change the Baud Rate of an MS/TP device, right-click on the device in the **Site Tree**, and select **Commission MS/TP Network** from the context menu:



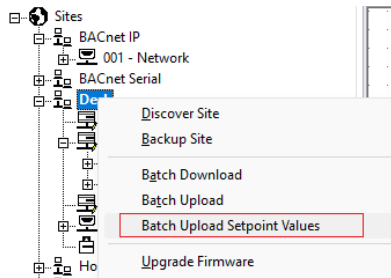
This will open the **Commission BACnet devices** dialog.

Select the **Baud rate** in the **Baud** column.



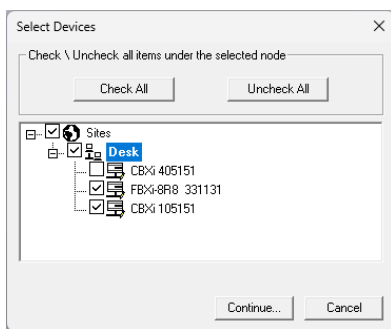
BATCH UPLOAD OF SET POINTS

To upload setpoint values from all controllers and update the local setpoint values to match, right-click on the **Site** in the Site Tree and select **Batch Upload Setpoint Values**:



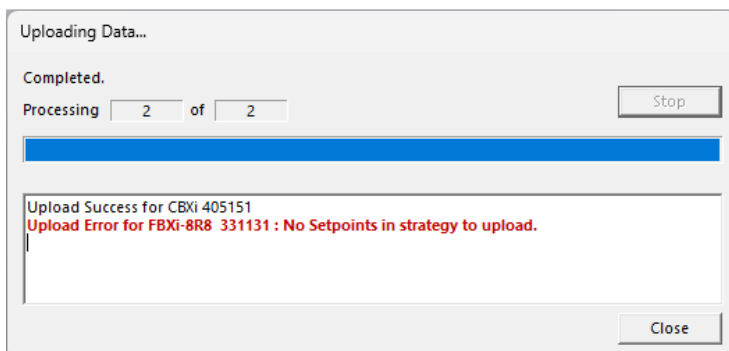
This will open the **Select Devices** dialog.

Select some or all of the controllers on the **Site**:



Click **Continue...** to start a batch upload process.

When the batch process has completed, the status of each controller will be displayed as follows:



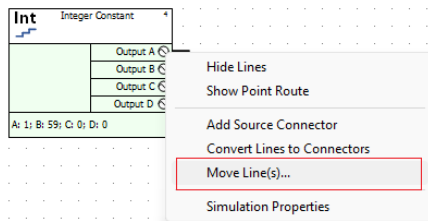
IMPROVED DOWNLOAD PROCESS

In the **Audit log** displayed at the start of each download:

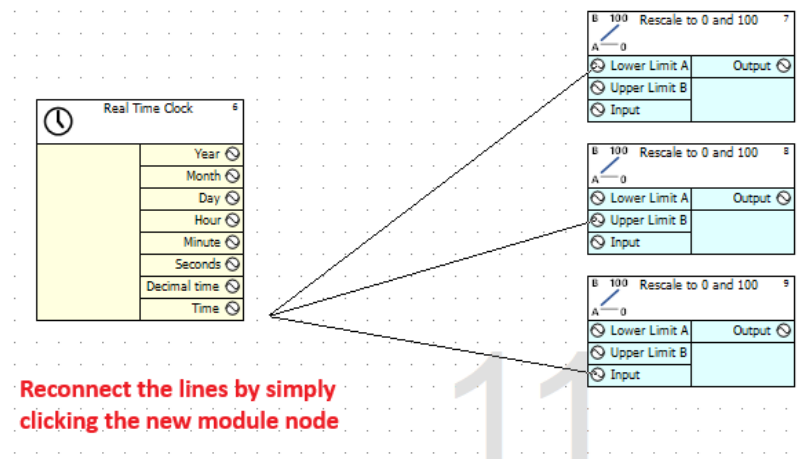
- The **User** field will be auto-populated with the current **Windows** user.
- The **Comment** field will now be optional and can be left blank.

MOVE EXISTING LINES

The lines that connect modules on a **strategy** drawing can be moved from one **module** to another without deleting and re-adding them. To do it, right-click on the output or input node on the module to which the line is connected, and select **Move Line(s)...** from the **context menu**:



The line(s) can then be moved by clicking the new module node:



RESOLVED ISSUES

- ST-11296 (CCB-1416) Fixed issue where the Time/Value pairs for **schedules** could sometimes show incorrectly as 'Off'.
- ST-11313 (CCB-1428) Fixed issue where the internal logic of the equation module was not being retrieved when uploading.
- ST-11331 (CCB-1431) Fixed issue with copying and pasting macros that contains **MSV Modules** or **Digital Points**.
- ST-11367 (CCB-1457) Improved the overall speed of **CXpro^{HD} Discovery** when devices such as **ASPECT BOWS** are present on the network.
- ST-11416 (CCB-1484) User now has the option to continue with download if invalid data is received when requesting the **Audit log**.
- ST-11173 The **Wipe Controller** button will not now be visible for controllers under **Smart Routers**.
- ST-11320 On the **COV Reader** module subscription interval, updated the default value to **15** minutes and the lower limit to **2** minutes.
- ST-11329 Added **Date/Time Sync** option to the error dialog shown when **Smart Router** check fails due to **SSL Cert** issues.
- ST-11437 Fixed issue where Firmware upgrade from **CXpro^{HD}** was failing for **FBXi-8R8** controllers.

Customer Impact

Customers affected by any of the issues listed here should update to v**1.07.06** as soon as is practical.