

RANA Linear Recessed - Louvre+Prismatic Optic  
RANA LINEAR R 3KLM WW LOUV+PRI D  
0052356



Product features

- Ceiling recessed LED Linear luminaire with Louvre + Micro Prismatic Optic, Dimensions: 1154mm x 90mm x 91mm, Direct, White Body, DALI Dimmable (Switch-Dim), Warm White LED (3000K), 3200lm, 27W, 119lm/W efficacy, CRI>80, 3 SDCM (3-step MacAdam ellipse), Low LED Flicker (+/-5%), UGR<19, L90B10 at 50,000 hours, Electric Class1, Glow Wire Test 850°C, Can be covered with building insulation of Glass wool type

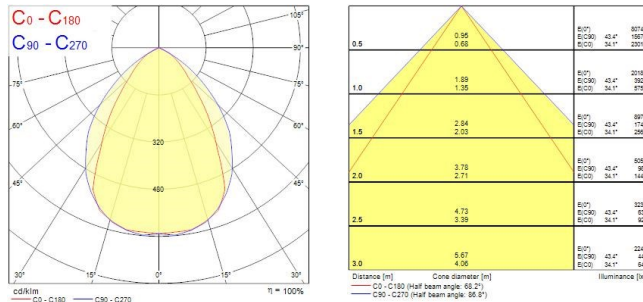


PRODUCT OVERVIEW

Product name	RANA LINEAR R 3KLM WW LOUV+PRI D
Technology	LED
Cap/Base	N/A
Housing	Steel
Mount	Ceiling recessed mounting
Fixture rating	Enclosed
Environment	Internal
General application	Office, Hospitality, Retail, Education
ETIM Class	EC002892
Warranty	5 years
Useful luminous flux (Fuse)	3200
Fixture luminous flux (lm)	3200
Luminaire efficacy (lm/W)	118.51
LOR (%)	100
Correlated colour temperature (k)	3000
Light colour	Warm White
CRI (Ra)	80
Colour Consistency (SDCM)	3
Glare control	< 19
Photobiological Risk Group	RG0
Total power consumption (W)	27
Electrical protection	Class I
Control gear type	Electronic ballast
Dimmable	Yes
Dimming method	DALI
Minimum dimming level (%)	1
Housing colour	RAL 9016 - Traffic white / Bezel
IP rating	IP20
IK rating	IK07
Product EAN number	5410288523569

**RANA Linear Recessed - Louvre+Prismatic Optic**  
*RANA LINEAR R 3KLM WW LOUV+PRI D*  
**0052356**

## PHOTOMETRY



## TECHNICAL DRAWINGS

