

TRONIX

Light-Control Sensor (PhotoCell)



Instruction 214-061

Welcome to use 214-061 light-control sensor!

The product can turn on or turn off light automatically according to ambient-light. Ambient temperature and humidity can't affect it. It is not only convenient but also practical; it can control the load working only at night. It is used for road light, garden light etc.

SPECIFICATION:

Power source: 220-240V/AC

Rated Current: 15A

Working Temperature: -20~+40°C

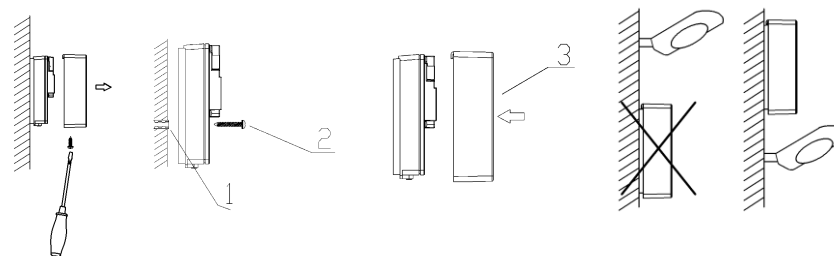
Power Frequency: 50/60Hz

Ambient Light: <2-100LUX (adjustable)

Working Humidity: <93%RH

INSTALLATION:

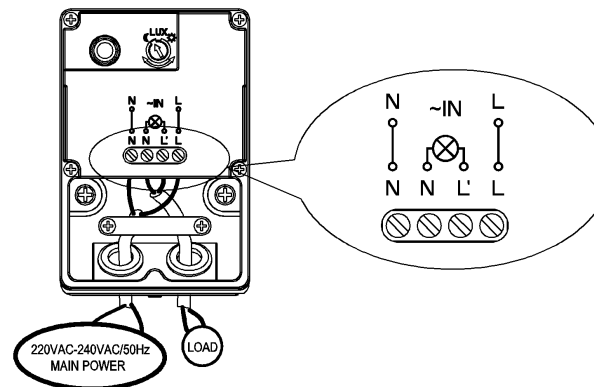
- Switch off the power.
- Loose one screw on the bottom and unload the cover.
- Connect the wire with the product as per the connection-wire diagram.
- According to the correct installation place, install the product with the enclosed inflated screws.
- Install back the cover. Switch on the power, and then test it.

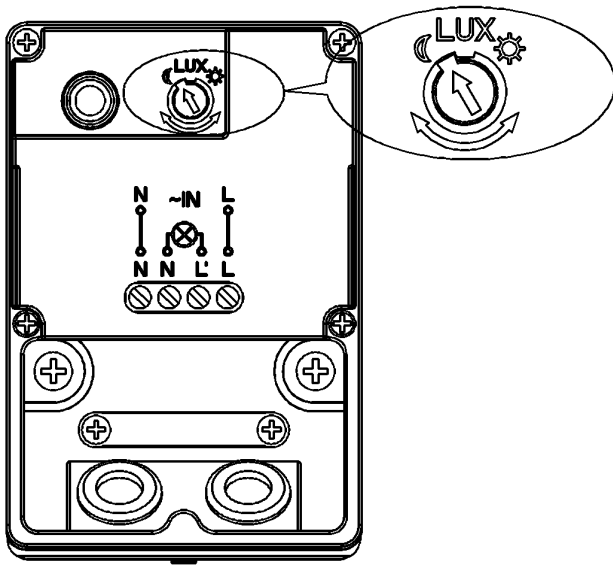


FIGURE

INCORRECT CORRECT

CONNECTION-WIRE DIAGRAM:





TEST:

- Slide the LUX knob to position moon and switch on the power.
- When you test in daytime. You should cover a black opaque cloth on the product.
- When the cloth mantles the detection window of the photocell, the ambient light of the photocell is less than 2 LUX, the lamp will be on.
- When you take off this cloth, the lamp will be off automatically.
- When you slide the LUX knob to position sun, the lamp could be on in the ambient light less than 100LUX.

NOTE:

- In front of the photocell, it should be no obstruction affecting to accept natural light;
- In front of the photocell, it should be no swaying object.
- Don't install the photocell under the light or in the place where the light will be irradiated to the photocell.