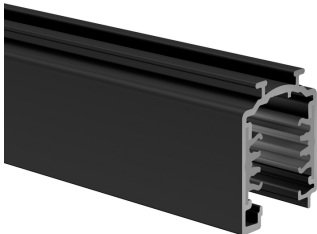


ONETRACK 4M BLACK CT 9000A-4/B-ST
9200508



Features

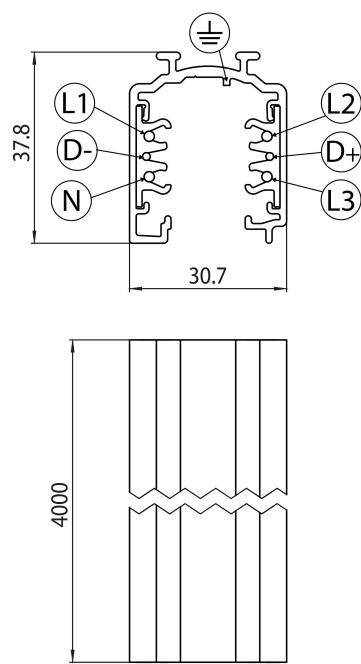
- Onetrack - 3 circuit track + 2 circuit control L1/L2/ L3/Neutral/ground 16A/440V + D+/D- 2x1A/50V FELV AC, DALI, DMX, 1-10V etc. compatible, circuits can be controlled individually, aluminum body, suitable for surface and suspended mounting, 4000 x 30.7 x 37.8 mm (L x W x H), black (RAL 9005). Singular carton tube packaging.

Product Overview

Product name	ONETRACK 4M BLACK CT 9000A-4/B-ST
Technology	Accessory
Housing	Aluminium
Mount	Suspended, Ceiling surface mounting, Wall surface mounted
General application	Museums & Galleries, Office
ETIM Class	EC000101
Electrical protection	Class I
Housing colour	Black
Product EAN number	4012289005085
Warranty	5 years

ONETRACK 4M BLACK CT 9000A-4/B-ST
9200508

Technical drawings



Data table

GENERAL DATA

Product name	ONETRACK 4M BLACK CT 9000A-4/B-ST
Technology	Accessory
Accessory type	Electrical
Type of accessory	Track
Housing	Aluminium
Mount	Suspended, Ceiling surface mounting, Wall surface mounted
General application	Museums & Galleries, Office
ETIM Class	EC000101
Warranty	5 years

ONETRACK 4M BLACK CT 9000A-4/B-ST 9200508

ELECTRICAL DATA

Primary Supply/Product voltage - min (V)	220
Primary Supply/Product voltage - max (V)	240
Electrical protection	Class I
Control gear required	No

PHYSICAL DATA

Housing colour	Black
Nominal Product Length (mm)	4000
Nominal Product Width (mm)	30.7
Nominal Product Height (mm)	37.8
Weight (kg)	4.07

PACKAGING

Product EAN number	4012289005085
Packaging single length / height (cm)	406.0
Packaging single width (cm)	5.4
Packaging single depth (cm)	5.4
Units per outer package	1
Packaging outer length / height (cm)	406.0
Packaging outer width (cm)	5.4
Packaging outer depth (cm)	5.4

SAFETY DATA

Special purpose lamp	No
Dry applications use only	No
Suitable for household illumination	No