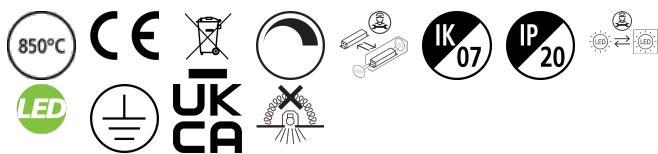


RANA Surface 600
RANA LED S 600 LO 3K LOUV+PRI 1-10 W GEN2
0051456



Product features

- Surface or Suspended LED Linear luminaire with Louvre + Prismatic Optic, Direct Light Distribution, Luminaire Dimensions: 616x616x50mm, Sylvania White body colour, IP20, IK07, Light Engine Dimensions: 570x130mm, 1-10V Dimmable, Low LED flicker (+/-5%), Warm White (3000K) LED Colour Temperature, 2800lm, 28W, 100lm/W efficacy, CRI>80, 3 SDCM (3-step MacAdam ellipse) LED Colour Consistency, UGR<19, Luminance at 65° < 3000 cd/m2, Lumen Maintenance: L90B10 at 50,000 hours, Quick electrical connection with push-connectors in the luminaire, Glow Wire Test 850°C.

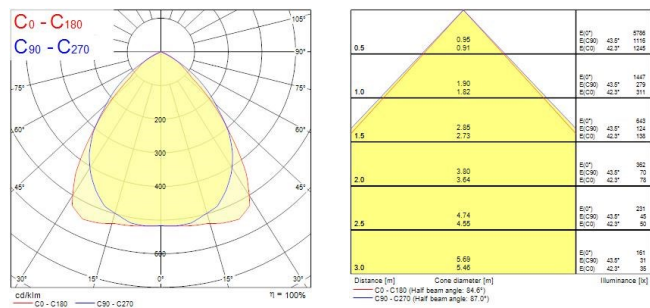


PRODUCT OVERVIEW

| | |
|-----------------------------------|---|
| Product name | RANA LED S 600 LO 3K LOUV+PRI 1-10 W GEN2 |
| Technology | LED |
| Cap/Base | N/A |
| Housing | Steel |
| Mount | Ceiling surface mounting, Suspended |
| General application | Education, Hospitality, Office, Retail |
| ETIM Class | EC002892 |
| Warranty | 5 years |
| Useful luminous flux (Fuse) | 2800 |
| Fixture luminous flux (lm) | 2800 |
| Luminous flux (lm) | 2800 |
| Luminaire efficacy (lm/W) | 100 |
| Correlated colour temperature (k) | 3000 |
| Light colour | Warm White |
| CRI (Ra) | 80 |
| Colour Variation Initial (SDCM) | SDCM3 |
| Glare control | < 19 |
| Photobiological Risk Group | RG0 |
| Total power consumption (W) | 28 |
| Electrical protection | Class I |
| Control gear type | LED driver constant current |
| Dimmable | Yes |
| Dimming method | 1-10V (Analogue) |
| Minimum dimming level (%) | 10 |
| Housing colour | White |
| IP rating | IP20 |
| IK rating | IK07 |
| Product EAN number | 5410288514567 |

PHOTOMETRY

RANA Surface 600
RANA LED S 600 LO 3K LOUV+PRI 1-10 W GEN2
0051456



TECHNICAL DRAWINGS

