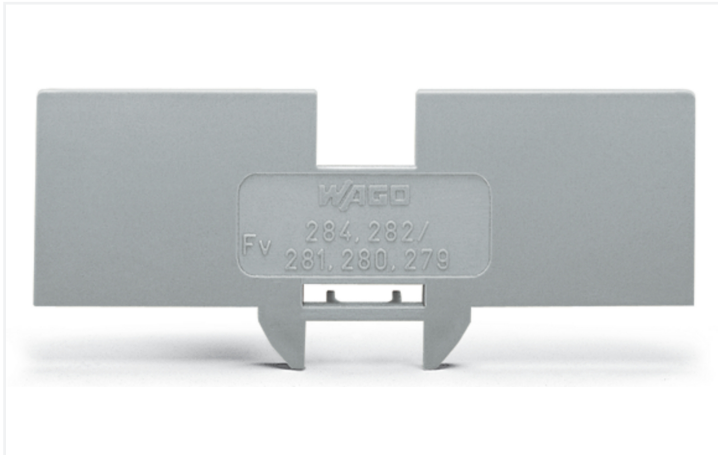


Data Sheet | Item Number: 284-334

Step-down cover plate; 1 mm thick; for 2-, 3- and 4-conductor terminal blocks; gray

<https://www.wago.com/284-334>



Color: ■ gray

Physical data

Width	1 mm / 0.039 inches
Height	68 mm / 2.677 inches
Depth	26.5 mm / 1.043 inches

Material data

Note (material data)	Information on material specifications can be found here
Color	gray
Material group	I
Insulation material (main housing)	Polyamide (PA66)
Flammability class per UL94	V0
Fire load	0.049 MJ
Weight	1.6 g

Commercial data

Product Group	1 (Rail Mounted Terminal Blocks)
PU (SPU)	100 (25) pcs
Packaging type	Box
Country of origin	CN
GTIN	4017332286831
Customs tariff number	85389099990

Product Classification	
UNSPSC	39121421
eCl@ss 10.0	27-14-11-33
eCl@ss 9.0	27-14-11-33
ETIM 9.0	EC000886
ETIM 10.0	EC000886
ECCN	NO US CLASSIFICATION

Environmental Product Compliance	
RoHS Compliance Status	Compliant, No Exemption

Downloads

Environmental Product Compliance

Compliance Search	
Environmental Product Compliance 284-334	↓

Documentation

Bid Text			
284-334	27.04.2017	doc 23.50 KB	↓
284-334	19.02.2019	xml 2.49 KB	↓

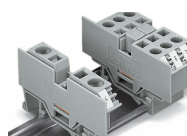
CAD/CAE-Data

CAD data	
2D/3D Models 284-334	↓

CAE data	
EPLAN Data Portal 284-334	↓
WSCAD Universe 284-334	↓
ZUKEN Portal 284-334	↓

Installation Notes

Installation



Snapping a cover plate onto open side of terminal block.

A cover plate must also be snapped onto the other side of the larger terminal block.

Subject to changes. Please also observe the further product documentation!

Current addresses can be found at: www.wago.com