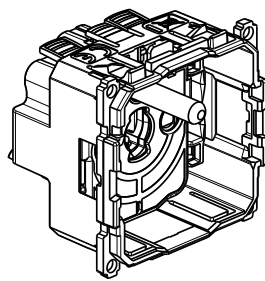
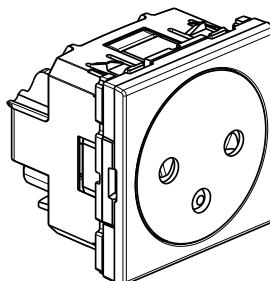


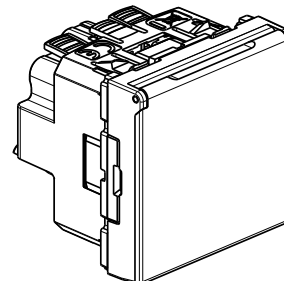
..4942AF



Y4142AF



..4142AF..



..4142AFP

Use

16 A - 250 Vac Franco-Belge standard socket outlet.
Mechanism supplied with front cover.
Mechanism to be completed with cover plates and supports.
Flush or wall mounting.

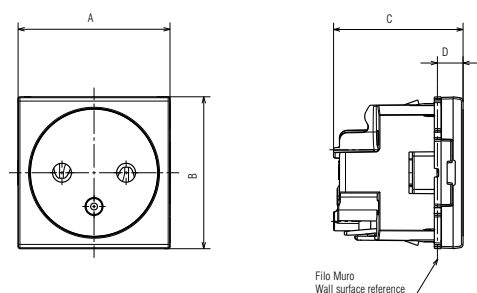
Range

Designation	Item
Socket 2P+E 16A 250 Va.c. - Flat - Shielded tulip contacts	<input type="checkbox"/> YW4142AF <input type="checkbox"/> YG4142AF <input type="checkbox"/> YD4142AF <input type="checkbox"/> Y4142AFR
Socket 2P+E 16A 250 Va.c. - Shielded tulip contacts with covers	<input type="checkbox"/> YW4142AFP <input type="checkbox"/> YG4142AFP <input type="checkbox"/> YD4142AFP
Socket 2P+E 16A 250 Va.c. - Shielded tulip contacts To be completed with Flat front cover ..4942AF	<input checked="" type="checkbox"/> Y4142AF <input type="checkbox"/> YW4942AF <input type="checkbox"/> YG4942AF <input type="checkbox"/> YD4942AF

Color code:

☐ White ☐ Stone ☐ Dark
☒ Red

Overall dimensions (mm)



	A	B	C	D
..4142AF	45.1	44.7	39.1	8.6
..4142AFP	45.1	44.7	41.7	11.2

Connection

Terminal type: screw clamp
Terminal capacity: 2 x 2.5 mm² max
Stripping length: 12 mm
Compatible with flexible or rigid cables

Technical characteristics

- Protection index

(considering a complete installation, including cover plate)
Penetration by solid bodies/liquid: IP20D

- Mechanical characteristics

Impact test: IK 04

- Material characteristics

Case and Key cover: PC (Polycarbonate)

Halogen free.

UV resistant.

Self-extinguishing:

850° C / 30 s for insulating parts holding live parts in place
650° C / 30 s for other parts made of insulating materials

- Electrical characteristics

Voltage: 250 VAC

Current: 16 A

- Climatic characteristics

Storage temperature: - 10° C to + 70° C

Use temperature: - 5° C to + 35° C

Cleaning

Clean the surface with a cloth.

Do not use acetone, tar-removing cleaning agents or trichloroethylene.

Caution: Always test before using special cleaning products.

Standards and approvals

Compliance with standards IEC 60884-1.
Refer to e.catalogue.