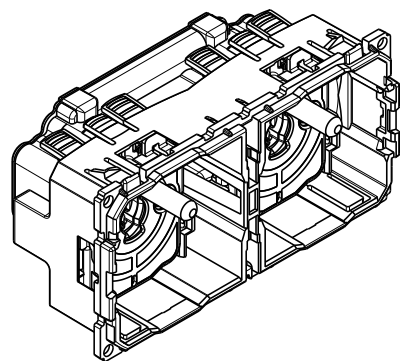
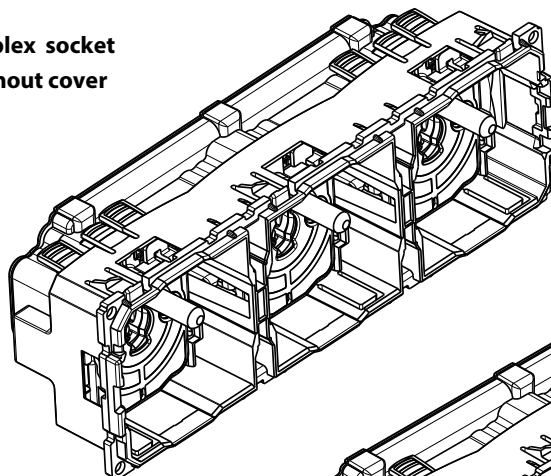


Duplex/Triplex Socket outlet 2P + E - 16 A

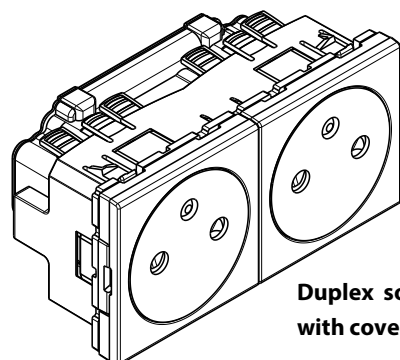
Y4142M2AF
YW4142M2AF - YG4142M2AF - YD4142M2AF
Y4142M3AF
YW4142M3AF - YG4142M3AF - YD4142M3AF



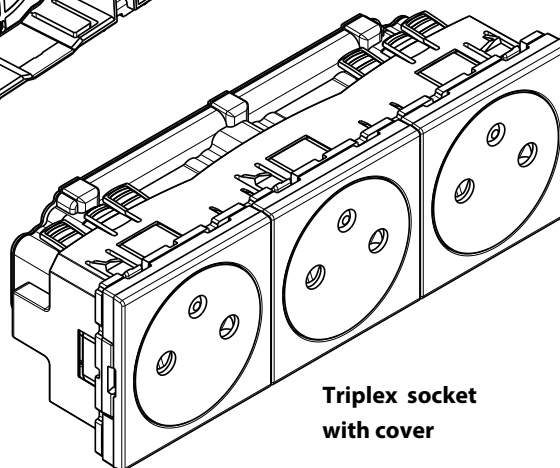
Duplex socket
without cover



Triplex socket
without cover



Duplex socket
with cover



Triplex socket
with cover

Use

16 A - 250 V French-Belgian standard socket outlet.
Mechanism supplied with or without cover, and to be completed with cover plates and supports.
Flush or wall mounting.

Range

Designation	Cat. No.
2P + E 16 A - 250 V duplex socket without cover. - 4 modules.	Y4142M2AF
2P + E 16 A - 250 V duplex socket with cover. - 4 modules.	<input type="checkbox"/> YW4142M2AF <input type="checkbox"/> YG4142M2AF <input type="checkbox"/> YD4142M2AF
2P + E 16 A - 250 V triplex socket without cover. - 6 modules.	Y4142M3AF
2P + E 16 A - 250 V triplex socket with cover. - 6 modules.	<input type="checkbox"/> YW4142M3AF <input type="checkbox"/> YG4142M3AF <input type="checkbox"/> YD4142M3AF

Colors: ☐ White ☐ Stone ☐ Dark

Connection

Terminal type: automatic
Terminal capacity: 2.5 mm²
Stripping length: 12 mm

Technical characteristics

- Mechanical characteristics

Control socket:

Protection against impacts: IK 04
Protection against solid bodies and/or liquids: IP 40 assembled product

- Material characteristics

Mechanism casing: PC
Halogen-free
UV resistant
Self-extinguishing: 850°C/30 s for insulating parts holding live parts in place.
650°C/30 s for the other insulating components.

- Electrical characteristics of Control socket

Voltage: 250 V~
Current: 16 A

- Climate characteristics

Storage temperature: 0° C to + 45° C
Usage temperature: +5° C to + 45° C

Cleaning

Clean the surface with a cloth.
Do not use acetone, tar-removing cleaning agents or trichloroethylene.

Caution: Always test before using special cleaning products.



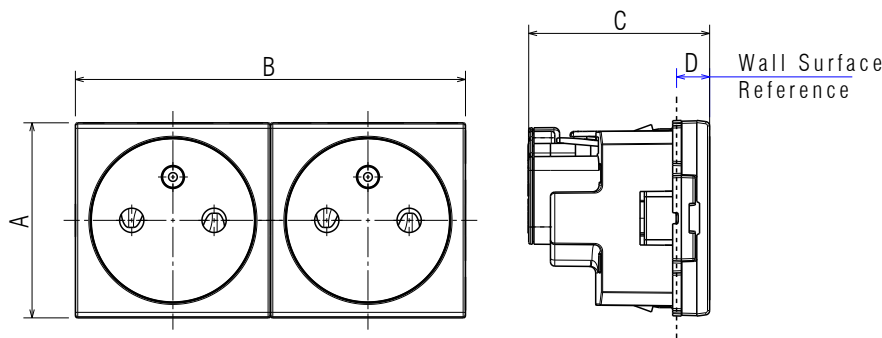
Take care to recycle the battery appropriately.

RAEE/WEEE: bticino.com/disposal

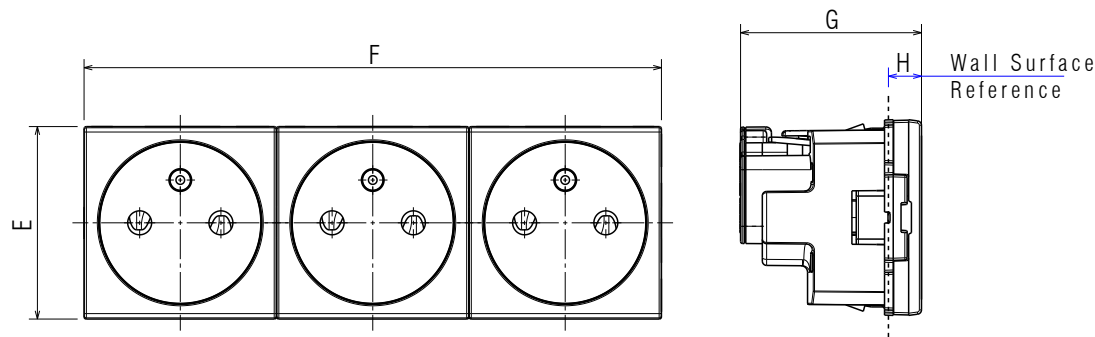
Duplex/Triplex Socket outlet 2P + E - 16 A

Y4142M2AF
YW4142M2AF - YG4142M2AF - YD4142M2AF
Y4142M3AF
YW4142M3AF - YG4142M3AF - YD4142M3AF

Overall dimensions (mm)



A	B	C	D
45	90	41.6	8.6



E	F	G	H
45	135	41.6	8.6

Standards and approvals

Compliance with standards of installation and manufacturing.
The full text of the EU declaration of conformity is available on the following website: www.bticino.it/red